



[Go to Product page](#)

Datasheet for ABIN7168149
anti-RRM2 antibody (AA 1-389)

1 Image

Overview

Quantity:	100 µg
Target:	RRM2
Binding Specificity:	AA 1-389
Reactivity:	Human
Host:	Rabbit
Clonality:	Polyclonal
Conjugate:	This RRM2 antibody is un-conjugated
Application:	Western Blotting (WB), ELISA

Product Details

Immunogen:	Recombinant Human Ribonucleoside-diphosphate reductase subunit M2 protein (1-389AA)
Isotype:	IgG
Cross-Reactivity:	Human
Purification:	>95%, Protein G purified

Target Details

Target:	RRM2
Alternative Name:	RRM2 (RRM2 Products)
Background:	Background: Provides the precursors necessary for DNA synthesis. Catalyzes the biosynthesis of deoxyribonucleotides from the corresponding ribonucleotides. Inhibits Wnt signaling.

Target Details

Aliases: cb111 antibody, chunp6884 antibody, etID309896.20 antibody, R2 antibody, reductase M2 polypeptide variant 1 antibody, reductase M2 polypeptide variant 2 antibody, reductase M2 polypeptide variant 3a antibody, reductase M2 polypeptide variant 3b antibody, reductase M2 polypeptide variant 3c antibody, reductase M2 polypeptide variant 3d antibody, Ribonucleoside-diphosphate reductase subunit M2 antibody, Ribonucleotide reductase M2 antibody, Ribonucleotide reductase M2 polypeptide antibody, Ribonucleotide reductase M2 subunit antibody, ribonucleotide reductase protein r2 class I antibody, Ribonucleotide reductase regulatory subunit M2 antibody, Ribonucleotide reductase small chain antibody, Ribonucleotide reductase small subunit antibody, Ribonucleotide reductase, R2 subunit antibody, RIR2_HUMAN antibody, RR2 antibody, RR2M antibody, RRM2 antibody

UniProt: [P31350](#)

Pathways: [Mitotic G1-G1/S Phases](#)

Application Details

Application Notes: Recommended dilution: WB:1:1000-1:5000,

Restrictions: For Research Use only

Handling

Format: Liquid

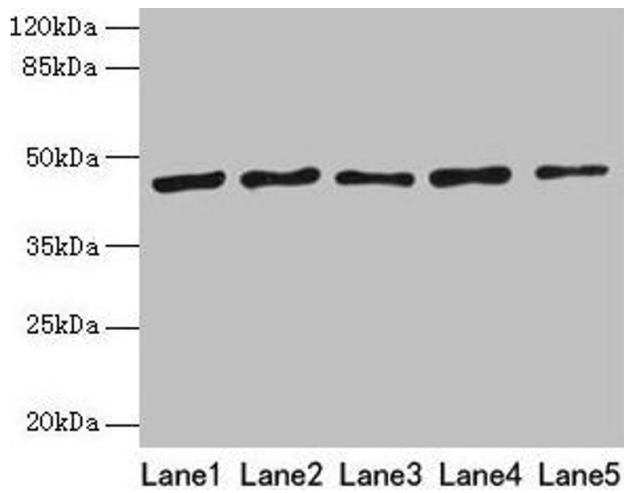
Buffer: Preservative: 0.03 % Proclin 300
Constituents: 50 % Glycerol, 0.01M PBS, PH 7.4

Preservative: ProClin

Precaution of Use: This product contains ProClin: a POISONOUS AND HAZARDOUS SUBSTANCE which should be handled by trained staff only.

Storage: -20 °C,-80 °C

Storage Comment: Upon receipt, store at -20°C or -80°C. Avoid repeated freeze.



Western Blotting

Image 1. Western blot All lanes: RRM2 antibody at 8 μ g/mL Lane 1: HepG2 whole cell lysate Lane 2: Jurkat whole cell lysate Lane 3: Hela whole cell lysate Lane 4: K562 whole cell lysate Lane 5: 293T whole cell lysate Secondary Goat polyclonal to rabbit IgG at 1/10000 dilution Predicted band size: 45, 52 kDa Observed band size: 45 kDa