

Datasheet for ABIN7168184
anti-MSK2 antibody (AA 237-393)[Go to Product page](#)

3 Images

Overview

Quantity:	100 µg
Target:	MSK2 (RPS6KA4)
Binding Specificity:	AA 237-393
Reactivity:	Human
Host:	Rabbit
Clonality:	Polyclonal
Conjugate:	This MSK2 antibody is un-conjugated
Application:	Western Blotting (WB), ELISA, Immunohistochemistry (IHC), Immunofluorescence (IF)

Product Details

Immunogen:	Recombinant Human Ribosomal protein S6 kinase alpha-4 protein (237-393AA)
Isotype:	IgG
Cross-Reactivity:	Human, Mouse
Purification:	>95%, Protein G purified

Target Details

Target:	MSK2 (RPS6KA4)
Alternative Name:	RPS6KA4 (RPS6KA4 Products)
Background:	Background: Serine/threonine-protein kinase that is required for the mitogen or stress-induced phosphorylation of the transcription factors CREB1 and ATF1 and for the regulation of the

Target Details

transcription factor RELA, and that contributes to gene activation by histone phosphorylation and functions in the regulation of inflammatory genes. Phosphorylates CREB1 and ATF1 in response to mitogenic or stress stimuli such as UV-C irradiation, epidermal growth factor (EGF) and anisomycin. Plays an essential role in the control of RELA transcriptional activity in response to TNF. Phosphorylates 'Ser-10' of histone H3 in response to mitogenics, stress stimuli and EGF, which results in the transcriptional activation of several immediate early genes, including proto-oncogenes c-fos/FOS and c-jun/JUN. May also phosphorylate 'Ser-28' of histone H3. Mediates the mitogen- and stress-induced phosphorylation of high mobility group protein 1 (HMG1/HMG14). In lipopolysaccharide-stimulated primary macrophages, acts downstream of the Toll-like receptor TLR4 to limit the production of pro-inflammatory cytokines. Functions probably by inducing transcription of the MAP kinase phosphatase DUSP1 and the anti-inflammatory cytokine interleukin 10 (IL10), via CREB1 and ATF1 transcription factors.

Aliases: 90 kDa ribosomal protein S6 kinase 4 antibody, EC 2.7.11.1 antibody, KS6A4_HUMAN antibody, Mitogen and stress activated protein kinase 2 antibody, Nuclear mitogen and stress activated protein kinase 2 antibody, Nuclear mitogen- and stress-activated protein kinase 2 antibody, Ribosomal protein kinase B antibody, Ribosomal protein S6 kinase 90kD polypeptide 4 antibody, Ribosomal protein S6 kinase 90 kDa polypeptide 4 antibody, Ribosomal protein S6 kinase alpha 4 antibody, Ribosomal protein S6 kinase alpha-4 antibody, RPS6KA4 antibody, RSKB antibody, S6K-alpha-4 antibody

UniProt: [O75676](#)

Application Details

Application Notes: Recommended dilution: WB:1:500-1:5000, IHC:1:20-1:200, IF:1:50-1:200,

Restrictions: For Research Use only

Handling

Format: Liquid

Buffer: Preservative: 0.03 % Proclin 300
Constituents: 50 % Glycerol, 0.01M PBS, PH 7.4

Preservative: ProClin

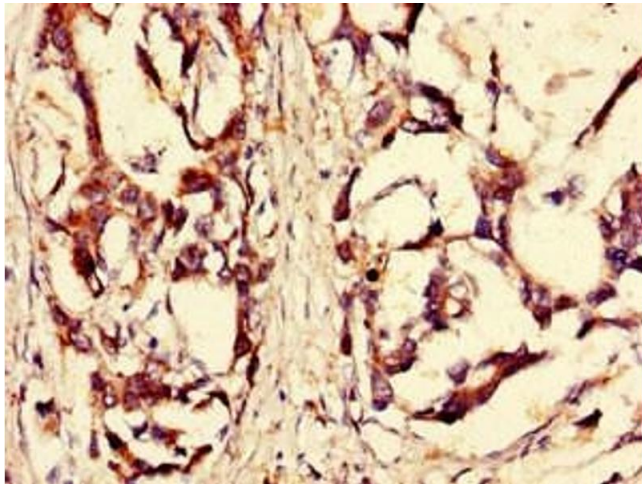
Precaution of Use: This product contains ProClin: a POISONOUS AND HAZARDOUS SUBSTANCE which should be handled by trained staff only.

Handling

Storage: -20 °C, -80 °C

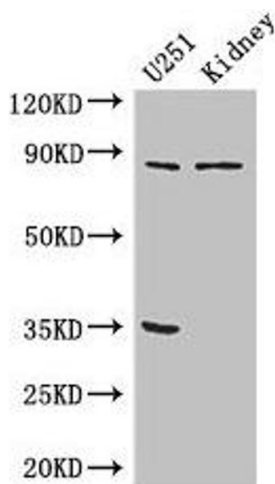
Storage Comment: Upon receipt, store at -20°C or -80°C. Avoid repeated freeze.

Images



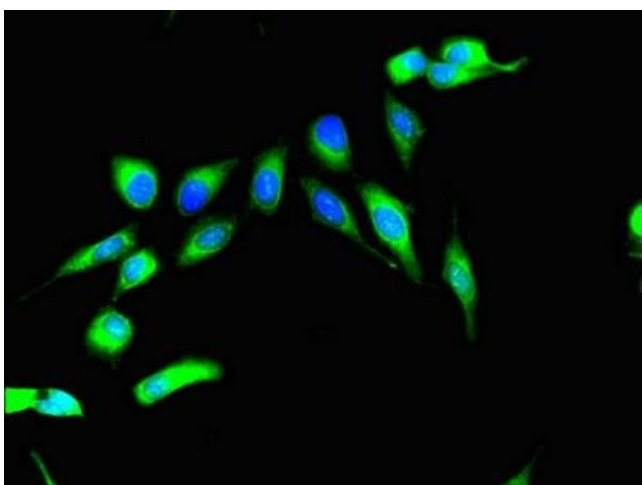
Immunohistochemistry

Image 1. Immunohistochemistry of paraffin-embedded human gastric cancer using ABIN7168184 at dilution of 1:100



Western Blotting

Image 2. Western Blot Positive WB detected in: U251 whole cell lysate, Mouse kidney tissue All lanes: RPS6KA4 antibody at 3 µg/mL Secondary Goat polyclonal to rabbit IgG at 1/50000 dilution Predicted band size: 86, 85 kDa Observed band size: 86 kDa



Immunofluorescence

Image 3. Immunofluorescent analysis of HeLa cells using ABIN7168184 at dilution of 1:100 and Alexa Fluor 488-conjugated AffiniPure Goat Anti-Rabbit IgG(H+L)