



[Go to Product page](#)

Datasheet for ABIN7168204
anti-RPS6KL1 antibody (AA 1-130)

3 Images

Overview

Quantity:	100 µL
Target:	RPS6KL1
Binding Specificity:	AA 1-130
Reactivity:	Human
Host:	Rabbit
Clonality:	Polyclonal
Conjugate:	This RPS6KL1 antibody is un-conjugated
Application:	Western Blotting (WB), ELISA, Immunohistochemistry (IHC)

Product Details

Immunogen:	Recombinant Human Ribosomal protein S6 kinase-like 1 protein (1-130AA)
Isotype:	IgG
Cross-Reactivity:	Human, Mouse
Purification:	Antigen Affinity Purified

Target Details

Target:	RPS6KL1
Alternative Name:	RPS6KL1 (RPS6KL1 Products)
Background:	Background: cytoplasm, intracellular membrane-bounded organelle, protein serine/threonine kinase activity, signal transduction

Target Details

Aliases: FLJ35734 antibody, MGC11287 antibody, ribosomal protein S6 kinase like 1 antibody, Ribosomal protein S6 kinase-like 1 antibody, RPKL1_HUMAN antibody, RPS6KL 1 antibody, RPS6KL1 antibody

UniProt: [Q9Y6S9](#)

Application Details

Application Notes: Recommended dilution: WB:1:1000-1:5000, IHC:1:20-1:200,

Restrictions: For Research Use only

Handling

Format: Liquid

Buffer: PBS with 0.02 % sodium azide, 50 % glycerol, pH 7.3.

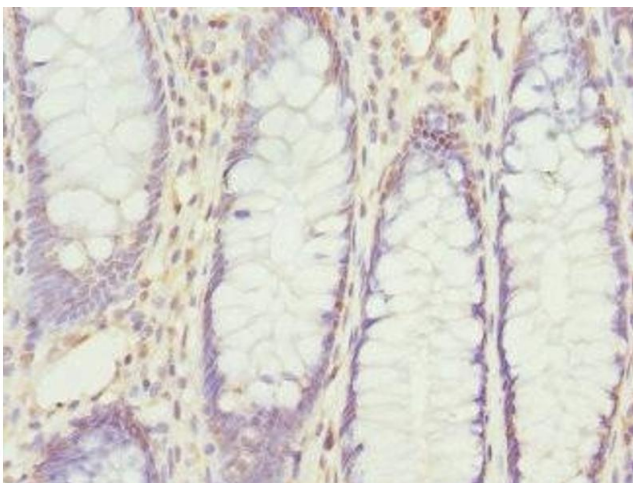
Preservative: Sodium azide

Precaution of Use: This product contains Sodium azide: a POISONOUS AND HAZARDOUS SUBSTANCE which should be handled by trained staff only.

Storage: -20 °C,-80 °C

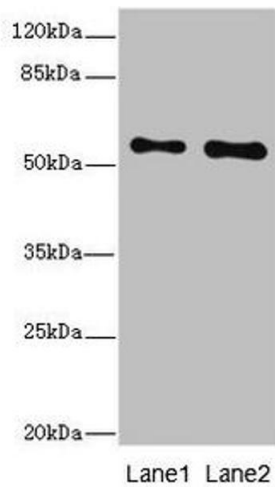
Storage Comment: Upon receipt, store at -20°C or -80°C. Avoid repeated freeze.

Images



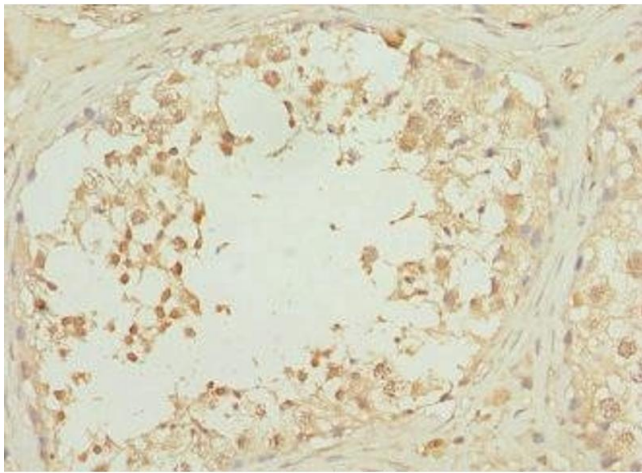
Immunohistochemistry

Image 1. Immunohistochemistry of paraffin-embedded human colon cancer using ABIN7168204 at dilution of 1:100



Western Blotting

Image 2. Western blot All lanes: RPS6KL1 antibody at 4.02 μ g/mL Lane 1: Mouse heart tissue Lane 2: Mouse kidney tissue Secondary Goat polyclonal to rabbit IgG at 1/10000 dilution Predicted band size: 61, 60, 29 kDa Observed band size: 61 kDa



Immunohistochemistry

Image 3. Immunohistochemistry of paraffin-embedded human testis tissue using ABIN7168204 at dilution of 1:100