

Datasheet for ABIN7168210
anti-SBDS antibody (AA 37-153)[Go to Product page](#)

2 Images

Overview

Quantity:	100 µg
Target:	SBDS
Binding Specificity:	AA 37-153
Reactivity:	Human
Host:	Rabbit
Clonality:	Polyclonal
Conjugate:	This SBDS antibody is un-conjugated
Application:	Immunohistochemistry (IHC), ELISA, Immunofluorescence (IF)

Product Details

Immunogen:	Recombinant Human Ribosome maturation protein SBDS protein (37-153AA)
Isotype:	IgG
Cross-Reactivity:	Human
Purification:	>95%, Protein G purified

Target Details

Target:	SBDS
Alternative Name:	SBDS (SBDS Products)
Background:	Background: Required for the assembly of mature ribosomes and ribosome biogenesis. Together with EFL1, triggers the GTP-dependent release of EIF6 from 60S pre-ribosomes in the

Target Details

cytoplasm, thereby activating ribosomes for translation competence by allowing 80S ribosome assembly and facilitating EIF6 recycling to the nucleus, where it is required for 60S rRNA processing and nuclear export. Required for normal levels of protein synthesis. May play a role in cellular stress resistance. May play a role in cellular response to DNA damage. May play a role in cell proliferation.

Aliases: 4733401P19Rik antibody, A1836084 antibody, CGI 97 antibody, CGI-97 antibody, FLJ10917 antibody, MGC105922 antibody, Protein 22A3 antibody, Ribosome maturation protein SBDS antibody, sbds antibody, SBDS_HUMAN antibody, SDS antibody, Shwachman Bodian Diamond syndrome protein antibody, Shwachman Bodian Diamond syndrome protein homolog antibody, Shwachman Bodian-Diamond syndrome antibody, Shwachman-Bodian-Diamond syndrome protein antibody, SWDS antibody

UniProt: [Q9Y3A5](#)

Pathways: [Ribonucleoprotein Complex Subunit Organization](#), [Ribosome Assembly](#)

Application Details

Application Notes: Recommended dilution: IHC:1:200-1:500, IF:1:50-1:200,

Restrictions: For Research Use only

Handling

Format: Liquid

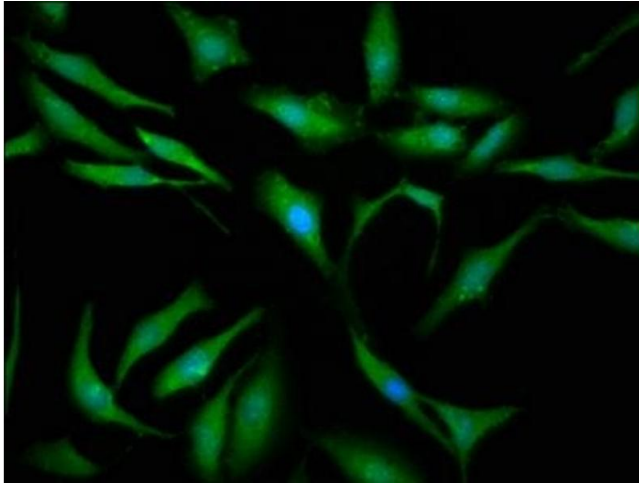
Buffer: Preservative: 0.03 % Proclin 300
Constituents: 50 % Glycerol, 0.01M PBS, pH 7.4

Preservative: ProClin

Precaution of Use: This product contains ProClin: a POISONOUS AND HAZARDOUS SUBSTANCE which should be handled by trained staff only.

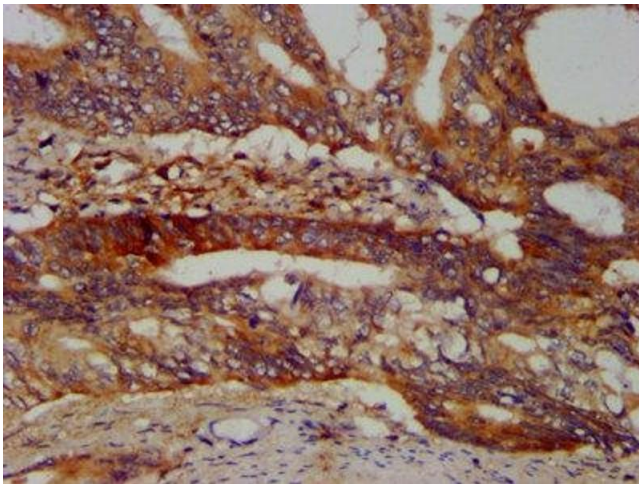
Storage: -20 °C, -80 °C

Storage Comment: Upon receipt, store at -20°C or -80°C. Avoid repeated freeze.



Immunofluorescence

Image 1. Immunofluorescence staining of HeLa cells with ABIN7168210 at 1:133, counter-stained with DAPI. The cells were fixed in 4% formaldehyde, permeabilized using 0.2% Triton X-100 and blocked in 10% normal Goat Serum. The cells were then incubated with the antibody overnight at 4°C. The secondary antibody was Alexa Fluor 488-conjugated AffiniPure Goat Anti-Rabbit IgG(H+L).



Immunohistochemistry

Image 2. IHC image of ABIN7168210 diluted at 1:400 and staining in paraffin-embedded human colon cancer performed on a Leica Bond™ system. After dewaxing and hydration, antigen retrieval was mediated by high pressure in a citrate buffer (pH 6.0). Section was blocked with 10% normal goat serum 30min at RT. Then primary antibody (1% BSA) was incubated at 4°C overnight. The primary is detected by a biotinylated secondary antibody and visualized using an HRP conjugated SP system.