



[Go to Product page](#)

Datasheet for ABIN7168248
anti-RNF148 antibody (AA 208-305)

3 Images

Overview

Quantity:	100 µg
Target:	RNF148
Binding Specificity:	AA 208-305
Reactivity:	Human
Host:	Rabbit
Clonality:	Polyclonal
Conjugate:	This RNF148 antibody is un-conjugated
Application:	ELISA, Immunohistochemistry (IHC), Western Blotting (WB), Immunofluorescence (IF)

Product Details

Immunogen:	Recombinant Human RING finger protein 148 protein (208-305AA)
Isotype:	IgG
Cross-Reactivity:	Human
Purification:	>95%, Protein G purified

Target Details

Target:	RNF148
Alternative Name:	RNF148 (RNF148 Products)
Background:	RNF148 antibody, RING finger protein 148 antibody
UniProt:	Q8N7C7

Application Details

Application Notes: Recommended dilution: WB:1:500-1:2000, IHC:1:20-1:200, IF:1:50-1:200,

Restrictions: For Research Use only

Handling

Format: Liquid

Buffer: Preservative: 0.03 % Proclin 300
Constituents: 50 % Glycerol, 0.01M PBS, PH 7.4

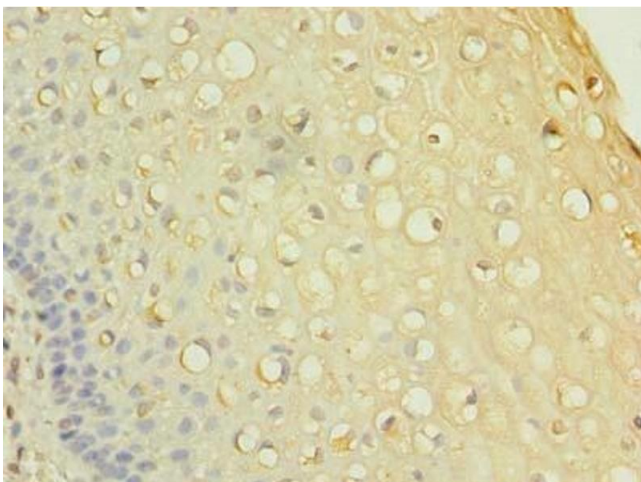
Preservative: ProClin

Precaution of Use: This product contains ProClin: a POISONOUS AND HAZARDOUS SUBSTANCE which should be handled by trained staff only.

Storage: -20 °C,-80 °C

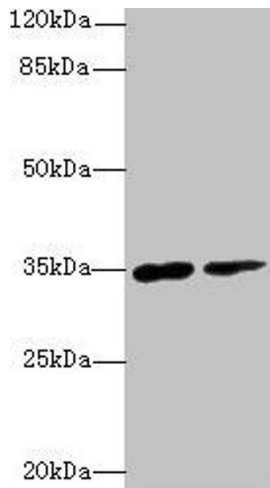
Storage Comment: Upon receipt, store at -20°C or -80°C. Avoid repeated freeze.

Images



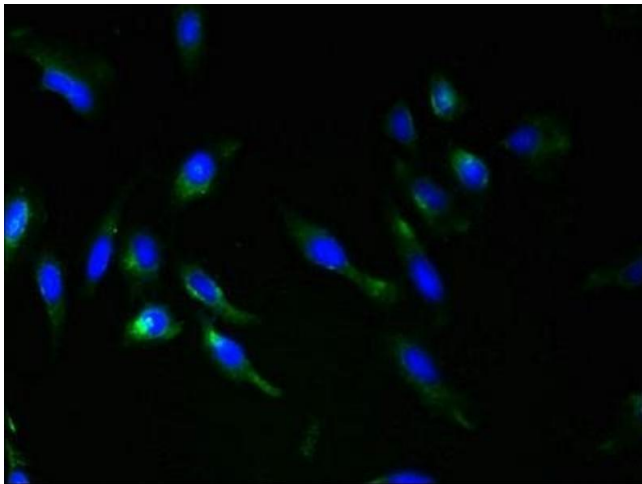
Immunohistochemistry

Image 1. Immunohistochemistry of paraffin-embedded human cervical cancer using ABIN7168248 at dilution of 1:100



Western Blotting

Image 2. Western blot All lanes: RNF148 antibody at 6 μ g/mL Lane 1: HeLa whole cell lysate Lane 2: HepG2 whole cell lysate Secondary Goat polyclonal to rabbit IgG at 1/10000 dilution Predicted band size: 35 kDa Observed band size: 35 kDa



Immunofluorescence

Image 3. Immunofluorescent analysis of HeLa cells using ABIN7168248 at dilution of 1:100 and Alexa Fluor 488-conjugated AffiniPure Goat Anti-Rabbit IgG(H+L)