

Datasheet for ABIN7168279
anti-NeuN antibody (AA 1-101)[Go to Product page](#)

1 Image

Overview

Quantity:	100 µg
Target:	NeuN (RBFOX3)
Binding Specificity:	AA 1-101
Reactivity:	Human
Host:	Rabbit
Clonality:	Polyclonal
Conjugate:	This NeuN antibody is un-conjugated
Application:	Immunohistochemistry (IHC), ELISA

Product Details

Immunogen:	Recombinant Human RNA binding protein fox-1 homolog 3 protein (1-101AA)
Isotype:	IgG
Cross-Reactivity:	Human
Purification:	>95%, Protein G purified

Target Details

Target:	NeuN (RBFOX3)
Alternative Name:	RBFOX3 (RBFOX3 Products)
Background:	Background: Pre-mRNA alternative splicing regulator. Regulates alternative splicing of RBFOX2 to enhance the production of mRNA species that are targeted for nonsense-mediated decay

Target Details

(NMD).

Aliases: FLJ56884 antibody, FLJ58356 antibody, Fox-1 homolog C antibody, fox1 homolog C antibody, Fox3 antibody, FOX3NeuN antibody, hexaribonucleotide binding protein 3 antibody, HRNBP3 antibody, NEUN antibody, neuronal nuclei antibody, Rbfox3 antibody, RFOX3_HUMAN antibody, RNA binding protein fox-1 homolog 3 antibody, RNA binding protein, fox 1 homolog (C. elegans) 3 antibody

UniProt: [A6NFN3](#)

Application Details

Application Notes: Recommended dilution: IHC:1:200-1:500,

Restrictions: For Research Use only

Handling

Format: Liquid

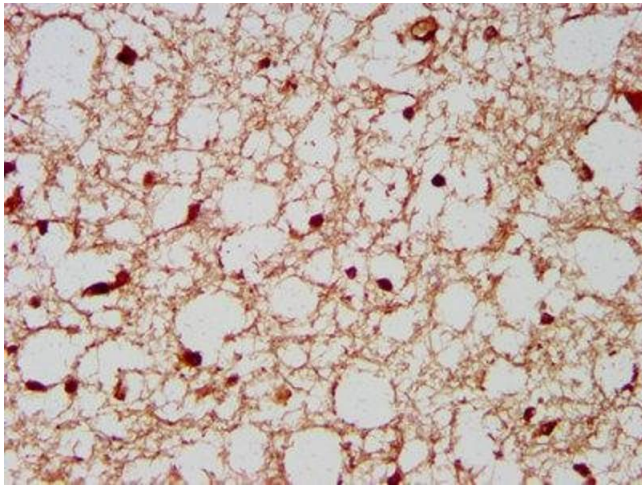
Buffer: Preservative: 0.03 % Proclin 300
Constituents: 50 % Glycerol, 0.01M PBS, pH 7.4

Preservative: ProClin

Precaution of Use: This product contains ProClin: a POISONOUS AND HAZARDOUS SUBSTANCE which should be handled by trained staff only.

Storage: -20 °C,-80 °C

Storage Comment: Upon receipt, store at -20°C or -80°C. Avoid repeated freeze.



Immunohistochemistry

Image 1. IHC image of ABIN7168279 diluted at 1:200 and staining in paraffin-embedded human brain tissue performed on a Leica Bond™ system. After dewaxing and hydration, antigen retrieval was mediated by high pressure in a citrate buffer (pH 6.0). Section was blocked with 10% normal goat serum 30min at RT. Then primary antibody (1% BSA) was incubated at 4°C overnight. The primary is detected by a biotinylated secondary antibody and visualized using an HRP conjugated SP system.