

Datasheet for ABIN7168303
anti-RTF1 antibody (AA 620-670)[Go to Product page](#)

4 Images

Overview

| | |
|----------------------|---|
| Quantity: | 100 µg |
| Target: | RTF1 |
| Binding Specificity: | AA 620-670 |
| Reactivity: | Human |
| Host: | Rabbit |
| Clonality: | Polyclonal |
| Conjugate: | This RTF1 antibody is un-conjugated |
| Application: | Western Blotting (WB), ELISA, Immunohistochemistry (IHC), Immunofluorescence (IF) |

Product Details

| | |
|-------------------|--|
| Immunogen: | Recombinant Human RNA polymerase-associated protein RTF1 homolog protein (620-670AA) |
| Isotype: | IgG |
| Cross-Reactivity: | Human |
| Purification: | >95%, Protein G purified |

Target Details

| | |
|-------------------|---|
| Target: | RTF1 |
| Alternative Name: | RTF1 (RTF1 Products) |
| Background: | Background: Component of the PAF1 complex (PAF1C) which has multiple functions during transcription by RNA polymerase II and is implicated in regulation of development and |

Target Details

maintenance of embryonic stem cell pluripotency. PAF1C associates with RNA polymerase II through interaction with POLR2A CTD non-phosphorylated and 'Ser-2'- and 'Ser-5'-phosphorylated forms and is involved in transcriptional elongation, acting both independently and synergistically with TCEA1 and in cooperation with the DSIF complex and HTATSF1. PAF1C is required for transcription of Hox and Wnt target genes. PAF1C is involved in hematopoiesis and stimulates transcriptional activity of KMT2A/MLL1, it promotes leukemogenesis through association with KMT2A/MLL1-rearranged oncoproteins, such as KMT2A/MLL1-MLLT3/AF9 and KMT2A/MLL1-MLLT1/ENL. PAF1C is involved in histone modifications such as ubiquitination of histone H2B and methylation on histone H3 'Lys-4' (H3K4me3). PAF1C recruits the RNF20/40 E3 ubiquitin-protein ligase complex and the E2 enzyme UBE2A or UBE2B to chromatin which mediate monoubiquitination of 'Lys-120' of histone H2B (H2BK120ub1), UB2A/B-mediated H2B ubiquitination is proposed to be coupled to transcription. PAF1C is involved in mRNA 3' end formation probably through association with cleavage and poly(A) factors. In case of infection by influenza A strain H3N2, PAF1C associates with viral NS1 protein, thereby regulating gene transcription. Binds single-stranded DNA. Required for maximal induction of heat-shock genes. Required for the trimethylation of histone H3 'Lys-4' (H3K4me3) on genes involved in stem cell pluripotency, this function is synergistic with CXXC1 indicative for an involvement of a SET1 complex (By similarity). Aliases: CDG1N antibody, GTL 7 antibody, GTL7 antibody, KIAA0252 antibody, Ortholog of mouse gene trap locus 7 antibody, RNA polymerase associated protein RTF1 homolog antibody, RNA polymerase-associated protein RTF1 homolog antibody, RTF 1 antibody, RTF1 antibody, Rtf1 Paf1/RNA polymerase II complex component homolog antibody, RTF1_HUMAN antibody, rtf1L antibody, YGL244W antibody

UniProt: [Q92541](#)

Pathways: [Stem Cell Maintenance](#)

Application Details

Application Notes: Recommended dilution: WB:1:2000-1:5000, IHC:1:20-1:200, IF:1:50-1:200,

Restrictions: For Research Use only

Handling

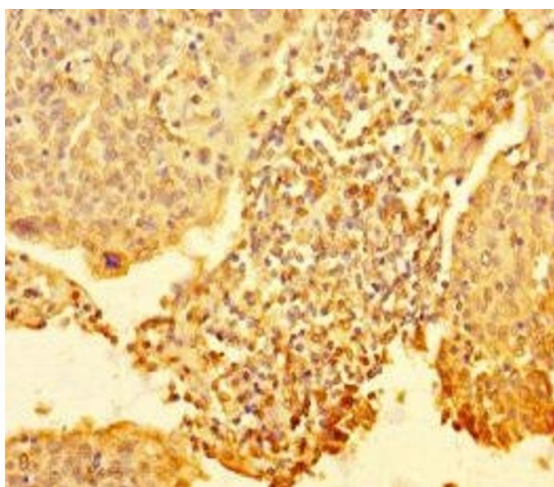
Format: Liquid

Buffer: Preservative: 0.03 % Proclin 300

Handling

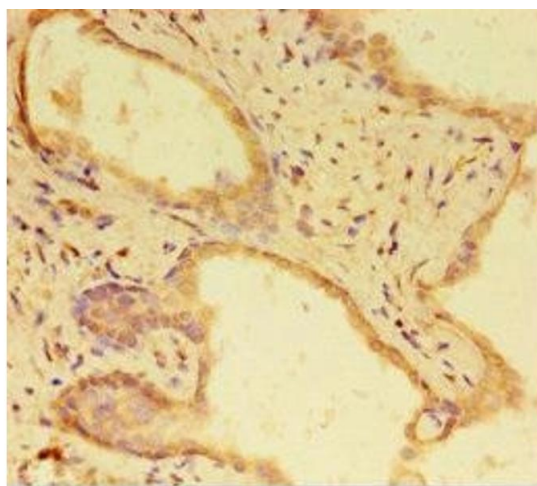
| | |
|--------------------|---|
| | Constituents: 50 % Glycerol, 0.01M PBS, PH 7.4 |
| Preservative: | ProClin |
| Precaution of Use: | This product contains ProClin: a POISONOUS AND HAZARDOUS SUBSTANCE which should be handled by trained staff only. |
| Storage: | -20 °C,-80 °C |
| Storage Comment: | Upon receipt, store at -20°C or -80°C. Avoid repeated freeze. |

Images



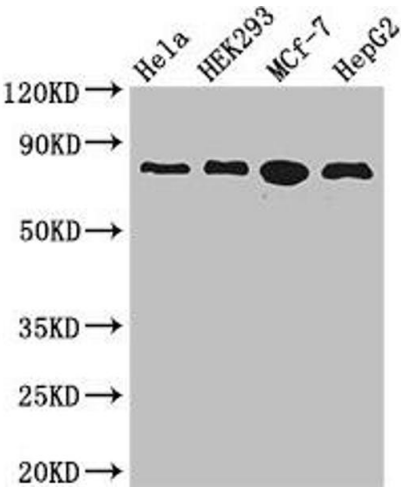
Immunohistochemistry

Image 1. Immunohistochemistry of paraffin-embedded human cervical cancer using ABIN7168303 at dilution of 1:100



Immunohistochemistry

Image 2. Immunohistochemistry of paraffin-embedded human prostate cancer using ABIN7168303 at dilution of 1:100



Western Blotting

Image 3. Western Blot Positive WB detected in: HeLa whole cell lysate, HEK293 whole cell lysate, MCF-7 whole cell lysate, HepG2 whole cell lysate All lanes: RTF1 antibody at 3.4 µg/mL Secondary Goat polyclonal to rabbit IgG at 1/50000 dilution Predicted band size: 81 kDa Observed band size: 81 kDa

Please check the [product details page](#) for more images. Overall 4 images are available for ABIN7168303.