

Datasheet for ABIN7168341
anti-RBM38 antibody (AA 1-239)[Go to Product page](#)

2 Images

Overview

Quantity:	100 µg
Target:	RBM38
Binding Specificity:	AA 1-239
Reactivity:	Human
Host:	Rabbit
Clonality:	Polyclonal
Conjugate:	This RBM38 antibody is un-conjugated
Application:	ELISA, Immunohistochemistry (IHC), Immunofluorescence (IF)

Product Details

Immunogen:	Recombinant Human RNA-binding protein 38 protein (1-239AA)
Isotype:	IgG
Cross-Reactivity:	Human
Purification:	>95%, Protein G purified

Target Details

Target:	RBM38
Alternative Name:	RBM38 (RBM38 Products)
Background:	Background: RNA-binding protein that specifically bind the 3'-UTR of CDKN1A transcripts, leading to maintain the stability of CDKN1A transcripts, thereby acting as a mediator of the

Target Details

p53/TP53 family to regulate CDKN1A. CDKN1A is a cyclin-dependent kinase inhibitor transcriptionally regulated by the p53/TP53 family to induce cell cycle arrest. Isoform 1, but not isoform 2, has the ability to induce cell cycle arrest in G1 and maintain the stability of CDKN1A transcripts induced by p53/TP53. Also acts as a mRNA splicing factor. Specifically regulates the expression of FGFR2-IIIb, an epithelial cell-specific isoform of FGFR2. Plays a role in myogenic differentiation.

Aliases: CLL associated antigen KW 5 antibody, CLL-associated antigen KW-5 antibody, HSRNASEB antibody, RBM38 antibody, RBM38_HUMAN antibody, RNA binding motif protein 38 antibody, RNA binding protein 38 antibody, RNA binding region (RNP1, RRM) containing 1 antibody, RNA binding region containing protein 1 antibody, RNA-binding motif protein 38 antibody, RNA-binding protein 38 antibody, RNA-binding region-containing protein 1 antibody, RNPC1 antibody, SEB4 antibody, SEB4B antibody, SEB4D antibody, ssDNA binding protein SEB4 antibody, ssDNA-binding protein SEB4 antibody

UniProt: [Q9H0Z9](#)

Pathways: [Regulation of Muscle Cell Differentiation, Skeletal Muscle Fiber Development](#)

Application Details

Application Notes: Recommended dilution: IHC:1:20-1:200, IF:1:50-1:200,

Restrictions: For Research Use only

Handling

Format: Liquid

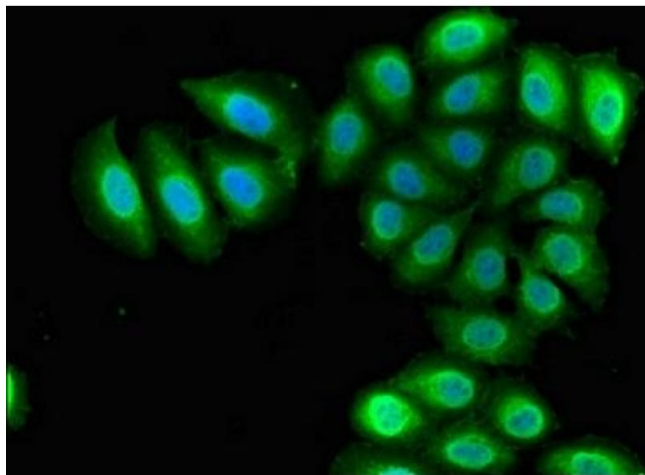
Buffer: Preservative: 0.03 % Proclin 300
Constituents: 50 % Glycerol, 0.01M PBS, pH 7.4

Preservative: ProClin

Precaution of Use: This product contains ProClin: a POISONOUS AND HAZARDOUS SUBSTANCE which should be handled by trained staff only.

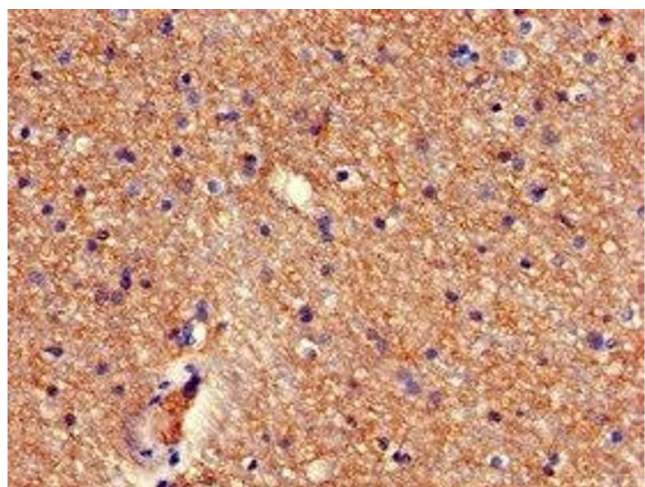
Storage: -20 °C,-80 °C

Storage Comment: Upon receipt, store at -20°C or -80°C. Avoid repeated freeze.



Immunofluorescence

Image 1. Immunofluorescent analysis of A549 cells using ABIN7168341 at dilution of 1:100 and Alexa Fluor 488-conjugated AffiniPure Goat Anti-Rabbit IgG(H+L)



Immunohistochemistry

Image 2. Immunohistochemistry of paraffin-embedded human brain tissue using ABIN7168341 at dilution of 1:100