



[Go to Product page](#)

Datasheet for ABIN7168365
anti-EWSR1 antibody (AA 1-300)

2 Images

Overview

Quantity:	100 µL
Target:	EWSR1
Binding Specificity:	AA 1-300
Reactivity:	Human
Host:	Rabbit
Clonality:	Polyclonal
Conjugate:	This EWSR1 antibody is un-conjugated
Application:	ELISA, Immunohistochemistry (IHC)

Product Details

Immunogen:	Recombinant Human RNA-binding protein EWS protein (1-300AA)
Isotype:	IgG
Cross-Reactivity:	Human
Purification:	Antigen Affinity Purified

Target Details

Target:	EWSR1
Alternative Name:	EWSR1 (EWSR1 Products)
Background:	Background: Might normally function as a transcriptional repressor. EWS-fusion-proteins (EFPS) may play a role in the tumorigenic process. They may disturb gene expression by

Target Details

mimicking, or interfering with the normal function of CTD-POLII within the transcription initiation complex. They may also contribute to an aberrant activation of the fusion protein target genes.

Aliases: bK984G1.4 antibody, bK984G1.4 Ewing sarcoma breakpoint region 1 protein antibody, Ewing sarcoma breakpoint region 1 antibody, Ewing sarcoma breakpoint region 1 protein antibody, Ewings sarcoma EWS Fli1 type 1 oncogene antibody, EWS antibody, EWS oncogene antibody, EWS RNA binding protein 1 antibody, EWS_HUMAN antibody, EWSR1 antibody, Ewsr1 antibody, EWSR1 protein antibody, RNA binding protein EWS antibody, RNA-binding protein EWS antibody

UniProt: [Q01844](#)

Application Details

Application Notes: Recommended dilution: IHC:1:20-1:200,

Restrictions: For Research Use only

Handling

Format: Liquid

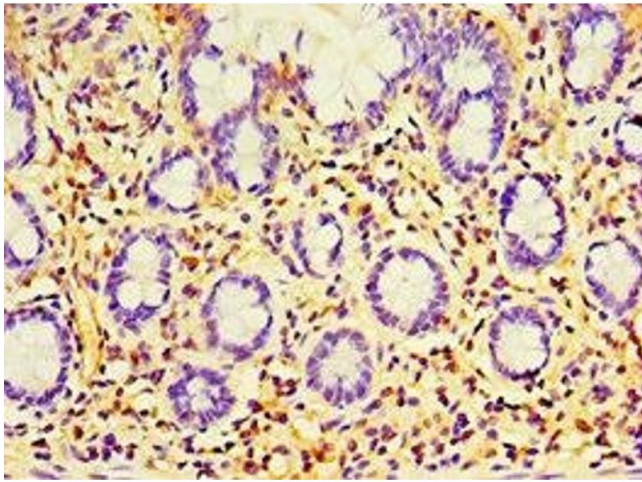
Buffer: PBS with 0.02 % sodium azide, 50 % glycerol, pH 7.3.

Preservative: Sodium azide

Precaution of Use: This product contains Sodium azide: a POISONOUS AND HAZARDOUS SUBSTANCE which should be handled by trained staff only.

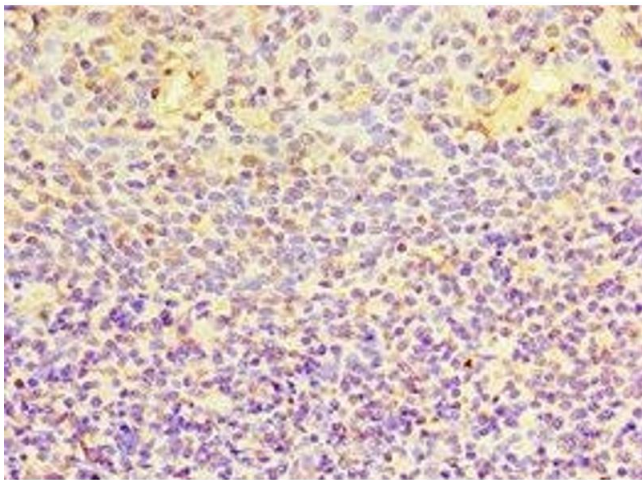
Storage: -20 °C,-80 °C

Storage Comment: Upon receipt, store at -20°C or -80°C. Avoid repeated freeze.



Immunohistochemistry

Image 1. Immunohistochemistry of paraffin-embedded human small intestine tissue using ABIN7168365 at dilution of 1:100



Immunohistochemistry

Image 2. Immunohistochemistry of paraffin-embedded human tonsil tissue using ABIN7168365 at dilution of 1:100