

Datasheet for ABIN7168378
anti-MSI1 antibody (AA 221-347)[Go to Product page](#)

2 Images

Overview

Quantity:	100 µg
Target:	MSI1
Binding Specificity:	AA 221-347
Reactivity:	Human
Host:	Rabbit
Clonality:	Polyclonal
Conjugate:	This MSI1 antibody is un-conjugated
Application:	ELISA, Immunohistochemistry (IHC), Immunofluorescence (IF)

Product Details

Immunogen:	Recombinant Human RNA-binding protein Musashi homolog 1 protein (221-347AA)
Isotype:	IgG
Cross-Reactivity:	Human
Purification:	>95%, Protein G purified

Target Details

Target:	MSI1
Alternative Name:	MSI1 (MSI1 Products)
Background:	Background: RNA binding protein that regulates the expression of target mRNAs at the translation level. Regulates expression of the NOTCH1 antagonist NUMB. Binds RNA containing

Target Details

the sequence 5\\\'-GUUAGUUAGUUAGUU-3\\\' and other sequences containing the pattern 5\\\'-[GA]U(1-3)AGU-3\\\' . May play a role in the proliferation and maintenance of stem cells in the central nervous system (By similarity).

Aliases: Msi 1 antibody, Msi1 antibody, MSI1H_HUMAN antibody, Musashi homolog 1 antibody, Musashi RNA binding protein 1 antibody, Musashi-1 antibody, Musashi1 antibody, RNA binding protein Musashi homolog 1 antibody, RNA-binding protein Musashi homolog 1 antibody

UniProt: [O43347](#)

Pathways: [Stem Cell Maintenance](#)

Application Details

Application Notes: Recommended dilution: IHC:1:500-1:1000, IF:1:50-1:200,

Restrictions: For Research Use only

Handling

Format: Liquid

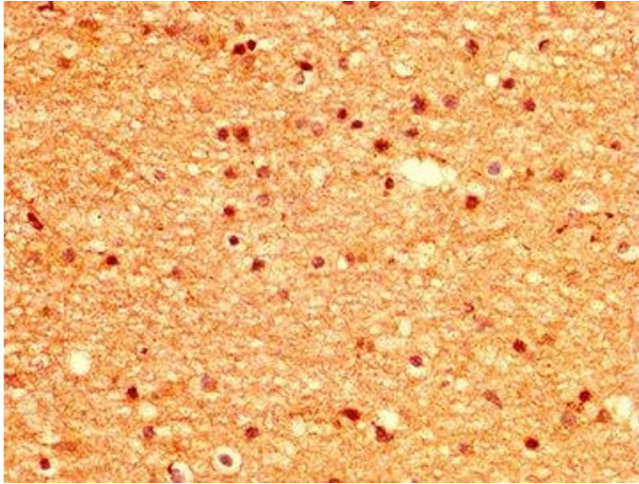
Buffer: Preservative: 0.03 % Proclin 300
Constituents: 50 % Glycerol, 0.01M PBS, pH 7.4

Preservative: ProClin

Precaution of Use: This product contains ProClin: a POISONOUS AND HAZARDOUS SUBSTANCE which should be handled by trained staff only.

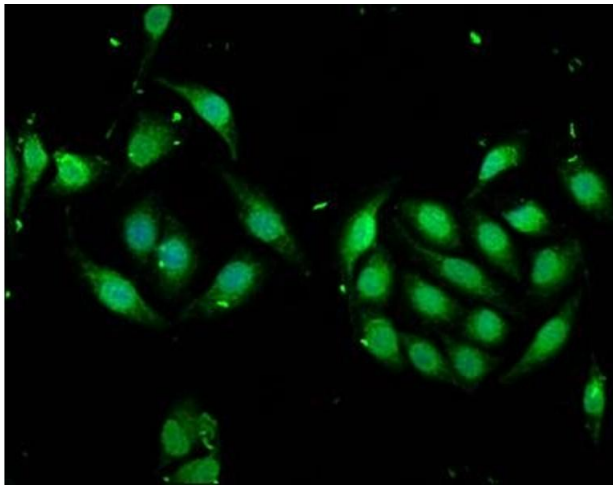
Storage: -20 °C,-80 °C

Storage Comment: Upon receipt, store at -20°C or -80°C. Avoid repeated freeze.



Immunohistochemistry

Image 1. IHC image of ABIN7168378 diluted at 1:500 and staining in paraffin-embedded human brain tissue performed on a Leica Bond™ system. After dewaxing and hydration, antigen retrieval was mediated by high pressure in a citrate buffer (pH 6.0). Section was blocked with 10% normal goat serum 30min at RT. Then primary antibody (1% BSA) was incubated at 4°C overnight. The primary is detected by a biotinylated secondary antibody and visualized using an HRP conjugated SP system.



Immunofluorescence

Image 2. Immunofluorescence staining of A549 cells with ABIN7168378 at 1:166, counter-stained with DAPI. The cells were fixed in 4% formaldehyde, permeabilized using 0.2% Triton X-100 and blocked in 10% normal Goat Serum. The cells were then incubated with the antibody overnight at 4°C. The secondary antibody was Alexa Fluor 488-conjugated AffiniPure Goat Anti-Rabbit IgG(H+L).