



[Go to Product page](#)

Datasheet for ABIN7168382
anti-MSI2 antibody (AA 1-80)

1 Image

Overview

Quantity:	100 µL
Target:	MSI2
Binding Specificity:	AA 1-80
Reactivity:	Human
Host:	Rabbit
Clonality:	Polyclonal
Application:	ELISA, Immunohistochemistry (IHC)

Product Details

Immunogen:	Recombinant Human RNA-binding protein Musashi homolog 2 protein (1-80AA)
Isotype:	IgG
Cross-Reactivity:	Human
Purification:	Antigen Affinity Purified

Target Details

Target:	MSI2
Alternative Name:	MSI2 (MSI2 Products)
Background:	Background: RNA binding protein that regulates the expression of target mRNAs at the translation level. May play a role in the proliferation and maintenance of stem cells in the central nervous system. Aliases: FLJ36569 antibody, MGC3245 antibody, Msi2 antibody, MSI2/HOXA9 fusion gene,

Target Details

included antibody, MSI2H antibody, MSI2H_HUMAN antibody, Musashi 2 antibody, Musashi homolog 2 antibody, Musashi RNA binding protein 2 antibody, Musashi, Drosophila, homolog of, 2 antibody, Musashi-2 antibody, RNA binding protein Musashi homolog 2 antibody, RNA-binding protein Musashi homolog 2 antibody, WD 40 repeat protein MSI2 antibody

UniProt: [Q96DH6](#)

Application Details

Application Notes: Recommended dilution: IHC:1:20-1:200,

Restrictions: For Research Use only

Handling

Format: Liquid

Buffer: PBS with 0.02 % sodium azide, 50 % glycerol, pH 7.3.

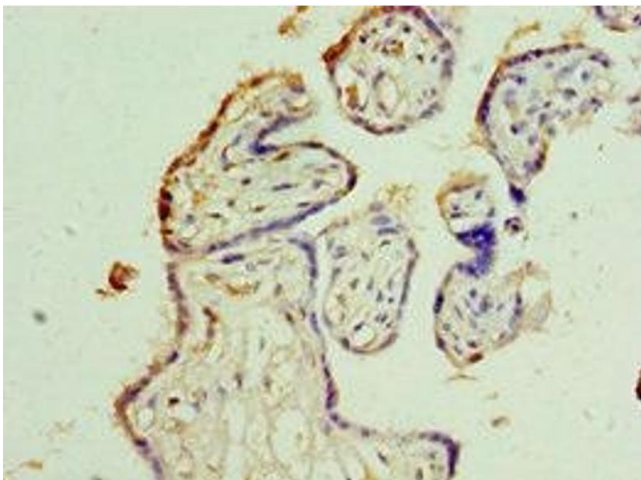
Preservative: Sodium azide

Precaution of Use: This product contains Sodium azide: a POISONOUS AND HAZARDOUS SUBSTANCE which should be handled by trained staff only.

Storage: -20 °C,-80 °C

Storage Comment: Upon receipt, store at -20°C or -80°C. Avoid repeated freeze.

Images



Immunohistochemistry

Image 1. Immunohistochemistry of paraffin-embedded human placenta tissue using ABIN7168382 at dilution of 1:100