

Datasheet for ABIN7168396  
**anti-Raly antibody (AA 254-306)**[Go to Product page](#)

## 4 Images

## Overview

Quantity:	100 µg
Target:	Raly (RALY)
Binding Specificity:	AA 254-306
Reactivity:	Human
Host:	Rabbit
Clonality:	Polyclonal
Conjugate:	This Raly antibody is un-conjugated
Application:	Western Blotting (WB), ELISA, Immunohistochemistry (IHC), Immunofluorescence (IF)

## Product Details

Immunogen:	Recombinant Human RNA-binding protein Raly protein (254-306AA)
Isotype:	IgG
Cross-Reactivity:	Human
Purification:	>95%, Protein G purified

## Target Details

Target:	Raly (RALY)
Alternative Name:	RALY ( <a href="#">RALY Products</a> )
Background:	Background: RNA-binding protein that acts as a transcriptional cofactor for cholesterol biosynthetic genes in the liver. Binds the lipid-responsive non-coding RNA LeXis and is required

## Target Details

for LeXis-mediated effect on cholesterologenesis (By similarity). May be a heterogeneous nuclear ribonucleoprotein (hnRNP) (PubMed:9376072).

Aliases: Autoantigen p542 antibody, Heterogeneous nuclear ribonucleoprotein C-like 2 antibody, hnRNP associated with lethal yellow protein homolog antibody, hnRNP core protein C-like 2 antibody, MGC117312 antibody, P542 antibody, RALY antibody, RALY\_HUMAN antibody, RNA binding protein (autoantigenic hnRNP associated with lethal yellow) antibody, RNA binding protein (autoantigenic) antibody, RNA binding protein autoantigenic (hnRNP associated with lethal yellow homolog (mouse)) antibody, RNA-binding protein Raly antibody

UniProt: [Q9UKM9](#)

## Application Details

Application Notes: Recommended dilution: WB:1:500-1:5000, IHC:1:500-1:1000, IF:1:50-1:200,

Restrictions: For Research Use only

## Handling

Format: Liquid

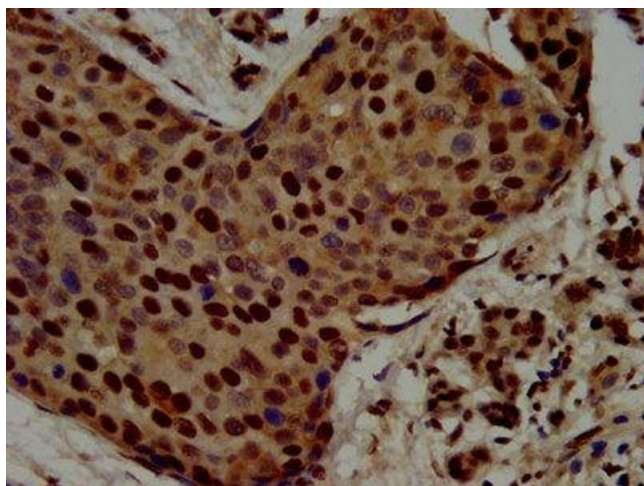
Buffer: Preservative: 0.03 % Proclin 300  
Constituents: 50 % Glycerol, 0.01M PBS, pH 7.4

Preservative: ProClin

Precaution of Use: This product contains ProClin: a POISONOUS AND HAZARDOUS SUBSTANCE which should be handled by trained staff only.

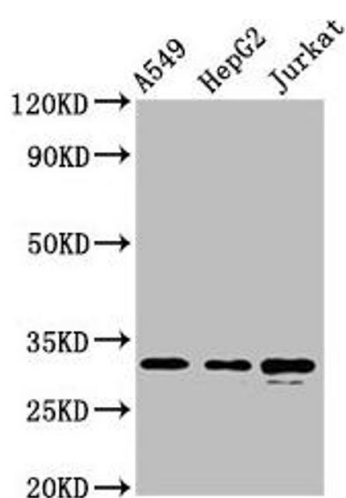
Storage: -20 °C, -80 °C

Storage Comment: Upon receipt, store at -20°C or -80°C. Avoid repeated freeze.



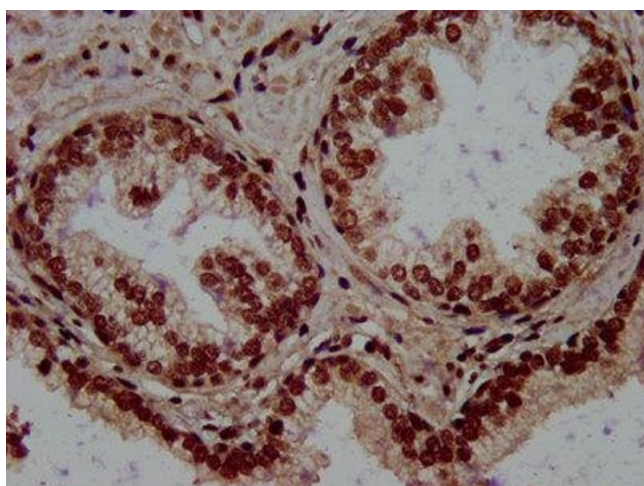
#### Immunohistochemistry

**Image 1.** IHC image of ABIN7168396 diluted at 1:500 and staining in paraffin-embedded human pancreatic cancer performed on a Leica Bond™ system. After dewaxing and hydration, antigen retrieval was mediated by high pressure in a citrate buffer (pH 6.0). Section was blocked with 10% normal goat serum 30min at RT. Then primary antibody (1% BSA) was incubated at 4°C overnight. The primary is detected by a biotinylated secondary antibody and visualized using an HRP conjugated SP system.



#### Western Blotting

**Image 2.** Western Blot Positive WB detected in: A549 whole cell lysate, HepG2 whole cell lysate, Jurkat whole cell lysate. All lanes: RALY antibody at 5.7 µg/mL. Secondary Goat polyclonal to rabbit IgG at 1/50000 dilution. Predicted band size: 33, 31 kDa. Observed band size: 33 kDa.



#### Immunohistochemistry

**Image 3.** IHC image of ABIN7168396 diluted at 1:500 and staining in paraffin-embedded human prostate cancer performed on a Leica Bond™ system. After dewaxing and hydration, antigen retrieval was mediated by high pressure in a citrate buffer (pH 6.0). Section was blocked with 10% normal goat serum 30min at RT. Then primary antibody (1% BSA) was incubated at 4°C overnight. The primary is detected by a biotinylated secondary antibody and visualized using an HRP conjugated SP system.

Please check the [product details page](#) for more images. Overall 4 images are available for ABIN7168396.