



[Go to Product page](#)

Datasheet for ABIN7168420  
**anti-ROPN1L antibody (AA 1-230)**

2 Images

Overview

Quantity:	100 µg
Target:	ROPN1L
Binding Specificity:	AA 1-230
Reactivity:	Human
Host:	Rabbit
Clonality:	Polyclonal
Conjugate:	This ROPN1L antibody is un-conjugated
Application:	ELISA, Immunohistochemistry (IHC)

Product Details

Immunogen:	Recombinant Human Ropporin-1-like protein (1-230AA)
Isotype:	IgG
Cross-Reactivity:	Human
Purification:	>95%, Protein G purified

Target Details

Target:	ROPN1L
Alternative Name:	ROPN1L ( <a href="#">ROPN1L Products</a> )
Background:	Background: cytoplasm, motile cilium, epithelial cilium movement Aliases: like antibody, AKAP-associated sperm protein antibody, ASP antibody, FLJ23003

## Target Details

antibody, FLJ25776 antibody, Radial spoke head 11 homolog antibody, Rhophilin associated tail protein 1 like antibody, ROP1L\_HUMAN antibody, ROPN1 like protein antibody, ROPN1-like protein antibody, ROPN1L antibody, Ropporin 1 like protein antibody, Ropporin-1-like protein antibody, RSPH11 antibody

UniProt: [Q96C74](#)

## Application Details

Application Notes: Recommended dilution: IHC:1:20-1:200,

Restrictions: For Research Use only

## Handling

Format: Liquid

Buffer: Preservative: 0.03 % Proclin 300  
Constituents: 50 % Glycerol, 0.01M PBS, PH 7.4

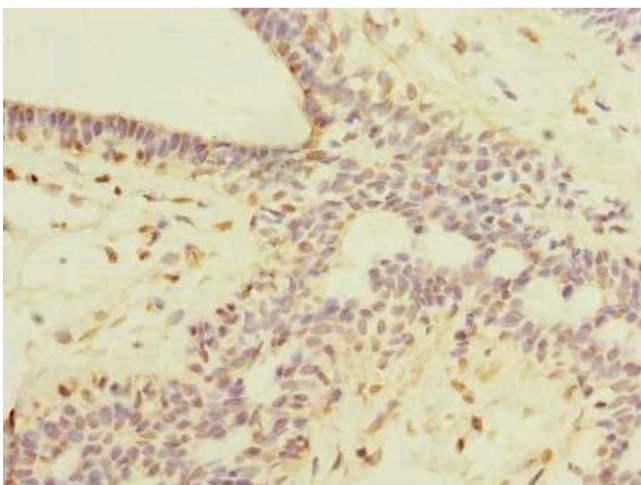
Preservative: ProClin

Precaution of Use: This product contains ProClin: a POISONOUS AND HAZARDOUS SUBSTANCE which should be handled by trained staff only.

Storage: -20 °C,-80 °C

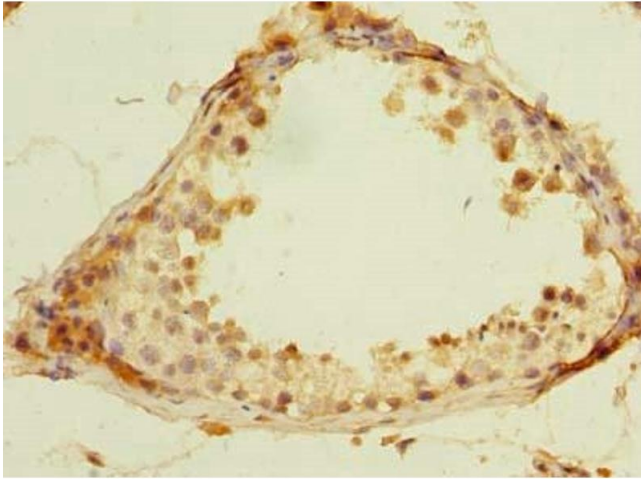
Storage Comment: Upon receipt, store at -20°C or -80°C. Avoid repeated freeze.

## Images



### Immunohistochemistry

**Image 1.** Immunohistochemistry of paraffin-embedded human breast cancer using ABIN7168420 at dilution of 1:100



### Immunohistochemistry

**Image 2.** Immunohistochemistry of paraffin-embedded human testis tissue using ABIN7168420 at dilution of 1:100