



[Go to Product page](#)

Datasheet for ABIN7168463
anti-RUFY2 antibody (AA 396-655)

3 Images

Overview

Quantity:	100 µL
Target:	RUFY2
Binding Specificity:	AA 396-655
Reactivity:	Human
Host:	Rabbit
Clonality:	Polyclonal
Conjugate:	This RUFY2 antibody is un-conjugated
Application:	Western Blotting (WB), Immunohistochemistry (IHC), ELISA

Product Details

Immunogen:	Recombinant Human RUN and FYVE domain-containing protein 2 protein (396-655AA)
Isotype:	IgG
Cross-Reactivity:	Human, Mouse
Purification:	Antigen Affinity Purified

Target Details

Target:	RUFY2
Alternative Name:	RUFY2 (RUFY2 Products)
Background:	RUFY2 antibody, KIAA1537 antibody, RABIP4R antibody, RUN and FYVE domain-containing protein 2 antibody, Rab4-interacting protein related antibody

Target Details

UniProt: [Q8WXA3](#)

Application Details

Application Notes: Recommended dilution: WB:1:1000-1:5000, IHC:1:20-1:200,

Restrictions: For Research Use only

Handling

Format: Liquid

Buffer: PBS with 0.02 % sodium azide, 50 % glycerol, pH 7.3.

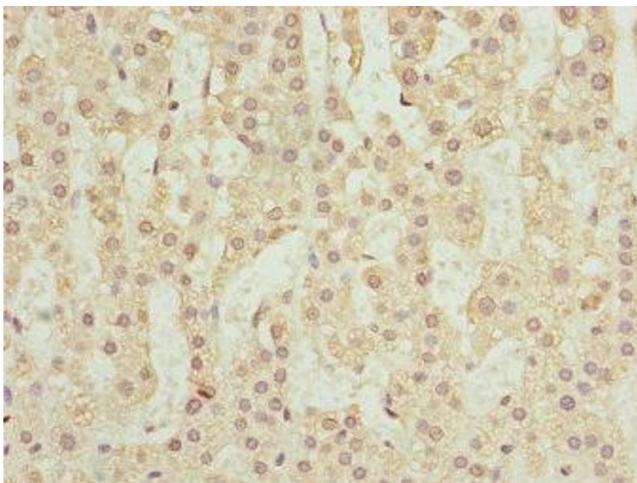
Preservative: Sodium azide

Precaution of Use: This product contains Sodium azide: a POISONOUS AND HAZARDOUS SUBSTANCE which should be handled by trained staff only.

Storage: -20 °C,-80 °C

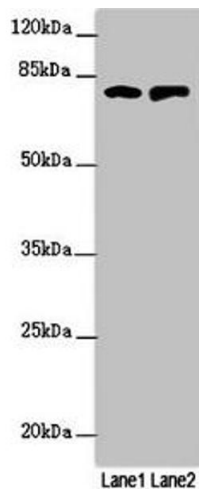
Storage Comment: Upon receipt, store at -20°C or -80°C. Avoid repeated freeze.

Images



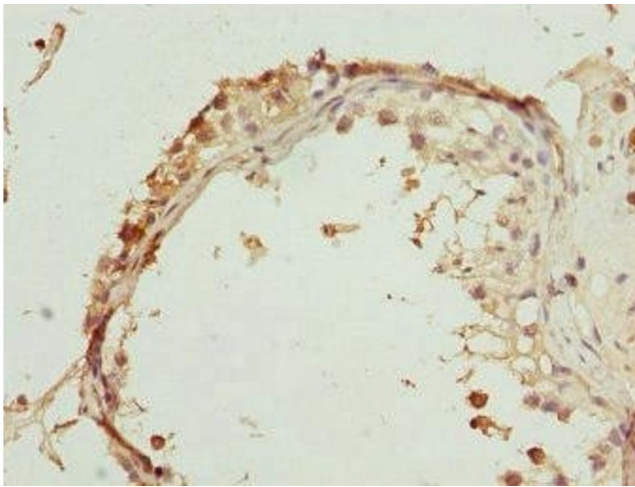
Immunohistochemistry

Image 1. Immunohistochemistry of paraffin-embedded human adrenal gland tissue using ABIN7168463 at dilution of 1:100



Western Blotting

Image 2. Western blot All lanes: RUFY2 antibody at 1.69 μ g/mL Lane 1: PC-3 whole cell lysate Lane 2: Mouse spleen tissue Secondary Goat polyclonal to rabbit IgG at 1/10000 dilution Predicted band size: 76, 71, 75, 47, 44 kDa Observed band size: 76 kDa



Immunohistochemistry

Image 3. Immunohistochemistry of paraffin-embedded human testis tissue using ABIN7168463 at dilution of 1:100