

Datasheet for ABIN7168469
anti-RUSC1 antibody (AA 231-433)[Go to Product page](#)

3 Images

Overview

Quantity:	100 µg
Target:	RUSC1
Binding Specificity:	AA 231-433
Reactivity:	Human
Host:	Rabbit
Clonality:	Polyclonal
Conjugate:	This RUSC1 antibody is un-conjugated
Application:	ELISA, Immunohistochemistry (IHC), Immunofluorescence (IF)

Product Details

Immunogen:	Recombinant Human RUN and SH3 domain-containing protein 1 protein (231-433AA)
Isotype:	IgG
Cross-Reactivity:	Human
Purification:	>95%, Protein G purified

Target Details

Target:	RUSC1
Alternative Name:	RUSC1 (RUSC1 Products)
Background:	Background: Putative signaling adapter which may play a role in neuronal differentiation. May be involved in regulation of NGF-dependent neurite outgrowth. Proposed to play a role in

Target Details

neuronal vesicular trafficking, specifically involving pre-synaptic membrane proteins. Seems to be involved in signaling pathways that are regulated by the prolonged activation of MAPK. Can regulate the polyubiquitination of IKBKG and thus may be involved in regulation of the NF-kappa-B pathway.

Aliases: RUSC1 antibody, NESCARUN and SH3 domain-containing protein 1 antibody, New molecule containing SH3 at the carboxy-terminus antibody, Nesca antibody

UniProt: [Q9BVN2](#)

Application Details

Application Notes: Recommended dilution: IHC:1:20-1:200, IF:1:50-1:200,

Restrictions: For Research Use only

Handling

Format: Liquid

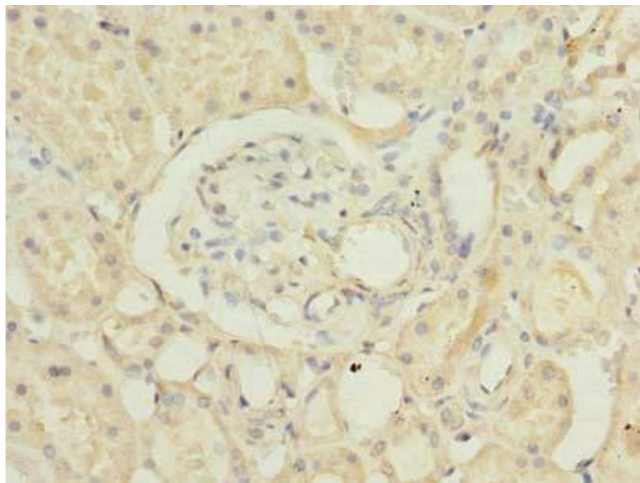
Buffer: Preservative: 0.03 % Proclin 300
Constituents: 50 % Glycerol, 0.01M PBS, PH 7.4

Preservative: ProClin

Precaution of Use: This product contains ProClin: a POISONOUS AND HAZARDOUS SUBSTANCE which should be handled by trained staff only.

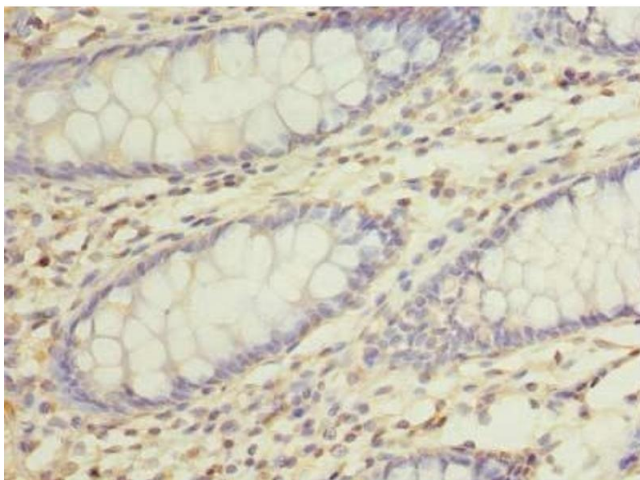
Storage: -20 °C, -80 °C

Storage Comment: Upon receipt, store at -20°C or -80°C. Avoid repeated freeze.



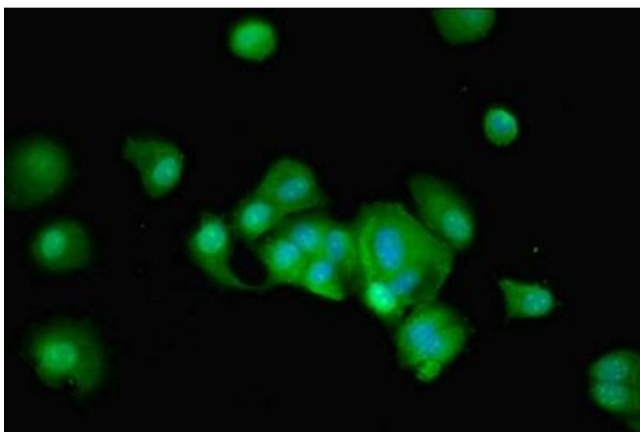
Immunohistochemistry

Image 1. Immunohistochemistry of paraffin-embedded human kidney tissue using ABIN7168469 at dilution of 1:100



Immunohistochemistry

Image 2. Immunohistochemistry of paraffin-embedded human colon cancer using ABIN7168469 at dilution of 1:100



Immunofluorescence

Image 3. Immunofluorescent analysis of MCF-7 cells using ABIN7168469 at dilution of 1:100 and Alexa Fluor 488-conjugated AffiniPure Goat Anti-Rabbit IgG(H+L)