

Datasheet for ABIN7168555
anti-SKP2 antibody (AA 1-424)[Go to Product page](#)

2 Images

Overview

Quantity:	100 µg
Target:	SKP2
Binding Specificity:	AA 1-424
Reactivity:	Human
Host:	Rabbit
Clonality:	Polyclonal
Conjugate:	This SKP2 antibody is un-conjugated
Application:	Western Blotting (WB), ELISA, Immunohistochemistry (IHC)

Product Details

Immunogen:	Recombinant Human S-phase kinase-associated protein 2 protein (1-424AA)
Isotype:	IgG
Cross-Reactivity:	Human
Purification:	>95%, Protein G purified

Target Details

Target:	SKP2
Alternative Name:	SKP2 (SKP2 Products)
Background:	Background: Substrate recognition component of a SCF (SKP1-CUL1-F-box protein) E3 ubiquitin-protein ligase complex which mediates the ubiquitination and subsequent

Target Details

proteasomal degradation of target proteins involved in cell cycle progression, signal transduction and transcription. Specifically recognizes phosphorylated CDKN1B/p27kip and is involved in regulation of G1/S transition. Degradation of CDKN1B/p27kip also requires CKS1. Recognizes target proteins ORC1, CDT1, RBL2, KMT2A/MLL1, CDK9, RAG2, FOXO1, UBP43, and probably MYC, TOB1 and TAL1. Degradation of TAL1 also requires STUB1. Recognizes CDKN1A in association with CCNE1 or CCNE2 and CDK2. Promotes ubiquitination and destruction of CDH1 in a CK1-Dependent Manner, thereby regulating cell migration.

Aliases: CDK2/Cyclin A associated protein p45 antibody, Cyclin A/CDK2 associated protein p45 antibody, Cyclin-A/CDK2-associated protein p45 antibody, F box protein Skp2 antibody, F box/LRR repeat protein 1 antibody, F-box protein Skp2 antibody, F-box/LRR-repeat protein 1 antibody, FBL 1 antibody, FBL1 antibody, FBXL 1 antibody, FBXL1 antibody, FLB 1 antibody, FLB1 antibody, MGC1366 antibody, p45 antibody, p45skp2 antibody, S phase kinase associated protein 2 (p45) antibody, S phase kinase associated protein 2 antibody, S-phase kinase-associated protein 2 antibody, S-phase kinase-associated protein 2 E3 ubiquitin protein ligase antibody, SKP 2 antibody, Skp2 antibody, SKP2_HUMAN antibody

UniProt: [Q13309](#)

Pathways: [Mitotic G1-G1/S Phases](#)

Application Details

Application Notes: Recommended dilution: WB:1:500-1:5000, IHC:1:20-1:200,

Restrictions: For Research Use only

Handling

Format: Liquid

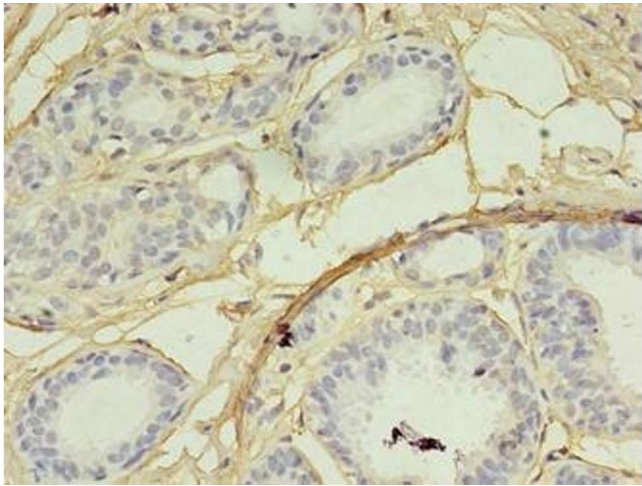
Buffer: Preservative: 0.03 % Proclin 300
Constituents: 50 % Glycerol, 0.01M PBS, PH 7.4

Preservative: ProClin

Precaution of Use: This product contains ProClin: a POISONOUS AND HAZARDOUS SUBSTANCE which should be handled by trained staff only.

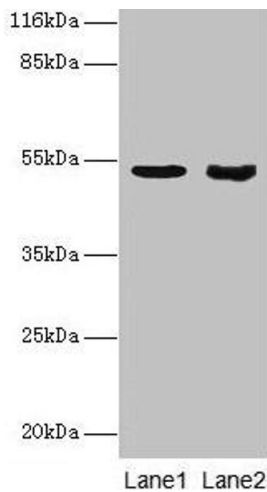
Storage: -20 °C,-80 °C

Storage Comment: Upon receipt, store at -20°C or -80°C. Avoid repeated freeze.



Immunohistochemistry

Image 1. Immunohistochemistry of paraffin-embedded human breast cancer using ABIN7168555 at dilution of 1:100



Western Blotting

Image 2. Western blot All lanes: SKP2 antibody at 2 µg/mL
Lane 1: Jurkat whole cell lysate Lane 2: Hela whole cell lysate
Secondary Goat polyclonal to rabbit IgG at 1/10000 dilution
Predicted band size: 48, 47, 24 kDa Observed band size: 48 kDa