

Datasheet for ABIN7168579  
**anti-SASH1 antibody (AA 76-191)**[Go to Product page](#)

## 1 Image

## Overview

Quantity:	100 µg
Target:	SASH1
Binding Specificity:	AA 76-191
Reactivity:	Human
Host:	Rabbit
Clonality:	Polyclonal
Conjugate:	This SASH1 antibody is un-conjugated
Application:	ELISA, Immunohistochemistry (IHC)

## Product Details

Immunogen:	Recombinant Human SAM and SH3 domain-containing protein 1 protein (76-191AA)
Isotype:	IgG
Cross-Reactivity:	Human
Purification:	>95%, Protein G purified

## Target Details

Target:	SASH1
Alternative Name:	SASH1 ( <a href="#">SASH1 Products</a> )
Background:	Background: May have a role in a signaling pathway. Could act as a tumor suppressor. Aliases: 2500002E12Rik antibody, dJ323M4 antibody, dJ323M4.1 antibody, KIAA0790 antibody,

## Target Details

PEPE 1 antibody, PEPE1 antibody, Proline glutamate repeat containing protein antibody, Proline-glutamate repeat-containing protein antibody, RP3 323M4.1 antibody, SAM and SH3 domain containing 1 antibody, SAM and SH3 domain containing protein 1 antibody, SAM and SH3 domain-containing protein 1 antibody, SASH 1 antibody, Sash1 antibody, SASH1\_HUMAN antibody

UniProt: [O94885](#)

## Application Details

Application Notes: Recommended dilution: IHC:1:200-1:500,

Restrictions: For Research Use only

## Handling

Format: Liquid

Buffer: Preservative: 0.03 % Proclin 300  
Constituents: 50 % Glycerol, 0.01M PBS, pH 7.4

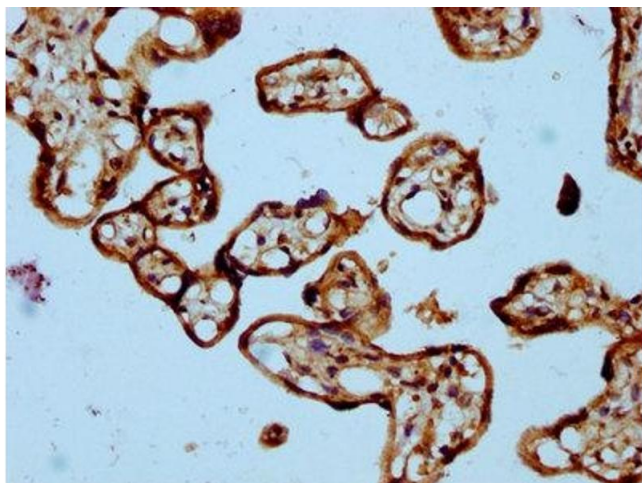
Preservative: ProClin

Precaution of Use: This product contains ProClin: a POISONOUS AND HAZARDOUS SUBSTANCE which should be handled by trained staff only.

Storage: -20 °C,-80 °C

Storage Comment: Upon receipt, store at -20°C or -80°C. Avoid repeated freeze.

## Images



### Immunohistochemistry

**Image 1.** IHC image of ABIN7168579 diluted at 1:300 and staining in paraffin-embedded human placenta tissue performed on a Leica Bond™ system. After dewaxing and hydration, antigen retrieval was mediated by high pressure in a citrate buffer (pH 6.0). Section was blocked with 10% normal goat serum 30min at RT. Then primary antibody (1% BSA) was incubated at 4°C overnight. The primary is detected by a biotinylated secondary antibody and

visualized using an HRP conjugated SP system.