

Datasheet for ABIN7168596

anti-ATP2A1/SERCA1 antibody (AA 384-579)[Go to Product page](#)**2** Images

Overview

Quantity:	100 µg
Target:	ATP2A1/SERCA1 (ATP2A1)
Binding Specificity:	AA 384-579
Reactivity:	Human
Host:	Rabbit
Clonality:	Polyclonal
Conjugate:	This ATP2A1/SERCA1 antibody is un-conjugated
Application:	ELISA, Immunohistochemistry (IHC), Immunofluorescence (IF)

Product Details

Immunogen:	Recombinant Human Sarcoplasmic/endoplasmic reticulum calcium ATPase 1 protein (384-579AA)
Isotype:	IgG
Cross-Reactivity:	Human
Purification:	>95%, Protein G purified

Target Details

Target:	ATP2A1/SERCA1 (ATP2A1)
Alternative Name:	ATP2A1 (ATP2A1 Products)
Background:	Background: Key regulator of striated muscle performance by acting as the major Ca(2+)

Target Details

ATPase responsible for the reuptake of cytosolic Ca(2+) into the sarcoplasmic reticulum. Catalyzes the hydrolysis of ATP coupled with the translocation of calcium from the cytosol to the sarcoplasmic reticulum lumen. Contributes to calcium sequestration involved in muscular excitation/contraction.

Aliases: fast twitch skeletal muscle isoform antibody, AT2A1_HUMAN antibody, ATP2A antibody, ATP2A1 antibody, ATPase Ca++ transporting cardiac muscle fast twitch 1 antibody, ATPase Ca++ transporting fast twitch 1 antibody, ATPase, Ca(2+)-transporting fast twitch 1 antibody, Calcium pump 1 antibody, Calcium transporting ATPase sarcoplasmic reticulum type fast twitch skeletal muscle isoform antibody, Calcium-transporting ATPase sarcoplasmic reticulum type antibody, EC 3.6.3.8 antibody, Endoplasmic reticulum class 1/2 Ca(2+) ATPase antibody, Fast skeletal muscle SR calcium ATPase antibody, OTTHUMP00000162561 antibody, OTTHUMP00000162562 antibody, Sarcoendoplasmic reticulum calcium ATPase antibody, Sarcoplasmic reticulum Ca(2+)-ATPase 1 antibody, Sarcoplasmic/endoplasmic reticulum calcium ATPase 1 antibody, SERCA 1 antibody, SERCA1 antibody, SERCA1 truncated isoform, included antibody, SR Ca(2+) ATPase 1 antibody, SR Ca(2+)-ATPase 1 antibody

UniProt: [O14983](#)

Pathways: [Ribonucleoside Biosynthetic Process](#)

Application Details

Application Notes: Recommended dilution: IHC:1:200-1:500, IF:1:50-1:200,

Restrictions: For Research Use only

Handling

Format: Liquid

Buffer: Preservative: 0.03 % Proclin 300
Constituents: 50 % Glycerol, 0.01M PBS, pH 7.4

Preservative: ProClin

Precaution of Use: This product contains ProClin: a POISONOUS AND HAZARDOUS SUBSTANCE which should be handled by trained staff only.

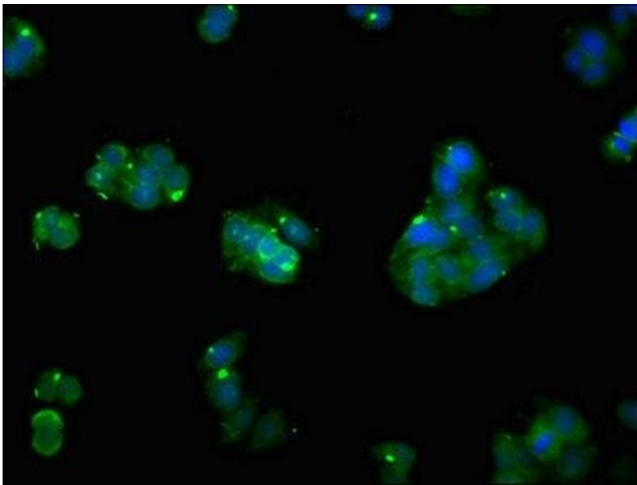
Storage: -20 °C,-80 °C

Storage Comment: Upon receipt, store at -20°C or -80°C. Avoid repeated freeze.



Immunohistochemistry

Image 1. IHC image of ABIN7168596 diluted at 1:300 and staining in paraffin-embedded human skeletal muscle tissue performed on a Leica Bond™ system. After dewaxing and hydration, antigen retrieval was mediated by high pressure in a citrate buffer (pH 6.0). Section was blocked with 10% normal goat serum 30min at RT. Then primary antibody (1% BSA) was incubated at 4°C overnight. The primary is detected by a biotinylated secondary antibody and visualized using an HRP conjugated SP system.



Immunofluorescence

Image 2. Immunofluorescent analysis of HepG2 cells using ABIN7168596 at dilution of 1:100 and Alexa Fluor 488-conjugated AffiniPure Goat Anti-Rabbit IgG(H+L)