



[Go to Product page](#)

Datasheet for ABIN7168622

## anti-SLFN11 antibody (AA 670-821)

### 3 Images

#### Overview

Quantity:	100 µg
Target:	SLFN11
Binding Specificity:	AA 670-821
Reactivity:	Human
Host:	Rabbit
Clonality:	Polyclonal
Conjugate:	This SLFN11 antibody is un-conjugated
Application:	ELISA, Western Blotting (WB), Immunohistochemistry (IHC), Immunofluorescence (IF)

#### Product Details

Immunogen:	Recombinant Human Schlafen family member 11 protein (670-821AA)
Isotype:	IgG
Cross-Reactivity:	Human, Mouse
Purification:	>95%, Protein G purified

#### Target Details

Target:	SLFN11
Alternative Name:	SLFN11 ( <a href="#">SLFN11 Products</a> )
Background:	Background: Interferon (IFN)-induced antiviral protein which acts as an inhibitor of retrovirus protein synthesis. Specifically abrogates the production of retroviruses such as human

## Target Details

---

immunodeficiency virus 1 (HIV-1) by acting as a specific inhibitor of the synthesis of retroviruses encoded proteins in a codon-usage-dependent manner. Binds to tRNAs and exploits the unique viral codon bias towards A/T nucleotides. The exact inhibition mechanism is unclear: may either sequesters tRNAs, prevents their maturation via post-transcriptional processing or accelerates their deacylation. Does not inhibit reverse transcription, integration or production and nuclear export of viral RNA. May play a role in cell cycle arrest and/or induction of apoptosis in response to exogenously induced DNA damage.

Aliases: SLFN11 antibody, Schlafen family member 11 antibody, EC 3.6.-.- antibody

---

UniProt: [Q7Z7L1](#)

## Application Details

---

Application Notes: Recommended dilution: WB:1:500-1:5000, IHC:1:100-1:500, IF:1:50-1:500,

Restrictions: For Research Use only

## Handling

---

Format: Liquid

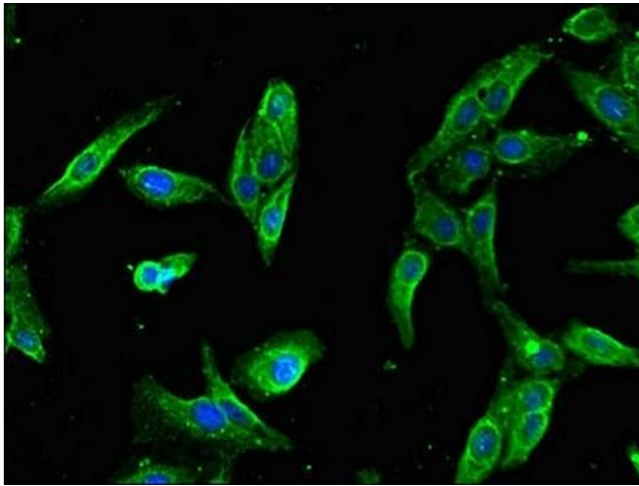
Buffer: Preservative: 0.03 % Proclin 300  
Constituents: 50 % Glycerol, 0.01M PBS, PH 7.4

Preservative: ProClin

Precaution of Use: This product contains ProClin: a POISONOUS AND HAZARDOUS SUBSTANCE which should be handled by trained staff only.

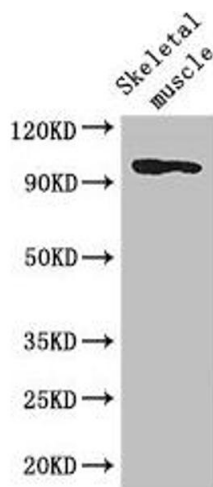
Storage: -20 °C,-80 °C

Storage Comment: Upon receipt, store at -20°C or -80°C. Avoid repeated freeze.



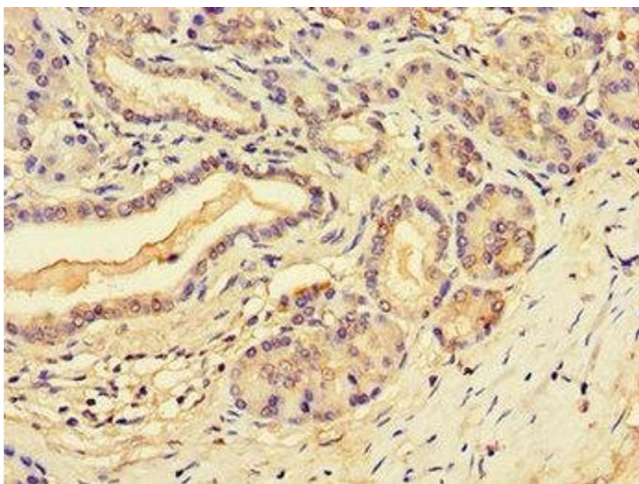
### Immunofluorescence

**Image 1.** Immunofluorescent analysis of HeLa cells using ABIN7168622 at dilution of 1:100 and Alexa Fluor 488-conjugated AffiniPure Goat Anti-Rabbit IgG(H+L)



### Western Blotting

**Image 2.** Western Blot Positive WB detected in: Mouse skeletal muscle tissue All lanes: SLFN11 antibody at 2.8  $\mu$ g/mL Secondary Goat polyclonal to rabbit IgG at 1/50000 dilution Predicted band size: 103 kDa Observed band size: 103 kDa



### Immunohistochemistry

**Image 3.** Immunohistochemistry of paraffin-embedded human pancreatic tissue using ABIN7168622 at dilution of 1:100