



[Go to Product page](#)

Datasheet for ABIN7168626
anti-STIL antibody (AA 388-637)

3 Images

Overview

Quantity:	100 µg
Target:	STIL
Binding Specificity:	AA 388-637
Reactivity:	Human
Host:	Rabbit
Clonality:	Polyclonal
Conjugate:	This STIL antibody is un-conjugated
Application:	ELISA, Immunohistochemistry (IHC), Immunofluorescence (IF)

Product Details

Immunogen:	Recombinant Human SCL-interrupting locus protein (388-637AA)
Isotype:	IgG
Cross-Reactivity:	Human
Purification:	>95%, Protein G purified

Target Details

Target:	STIL
Alternative Name:	STIL (STIL Products)
Background:	Background: Immediate-early gene. Plays an important role in embryonic development as well as in cellular growth and proliferation, its long-term silencing affects cell survival and cell cycle

Target Details

distribution as well as decreases CDK1 activity correlated with reduced phosphorylation of CDK1. Plays a role as a positive regulator of the sonic hedgehog pathway, acting downstream of PTCH1.

Aliases: DKFZp686O09161 antibody, MCPH7 antibody, OTTHUMP0000009566 antibody, SCL interrupting locus protein antibody, SCL-interrupting locus protein antibody, SCL/TAL1 interrupting locus antibody, SIL antibody, STIL antibody, STIL_HUMAN antibody, TAL 1 interrupting locus protein antibody, TAL-1-interrupting locus protein antibody

UniProt: [Q15468](#)

Pathways: [Tube Formation](#)

Application Details

Application Notes: Recommended dilution: IHC:1:20-1:200, IF:1:50-1:200,

Restrictions: For Research Use only

Handling

Format: Liquid

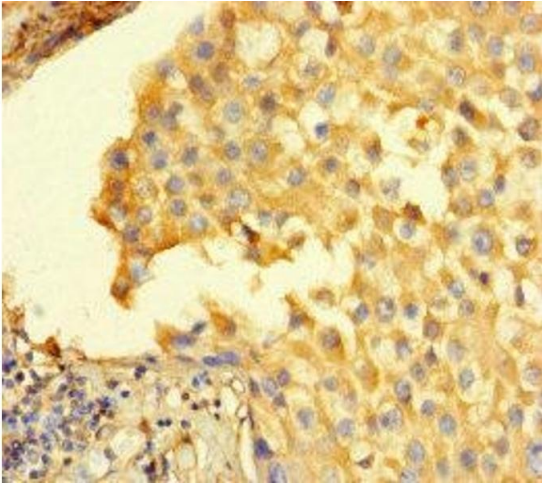
Buffer: Preservative: 0.03 % Proclin 300
Constituents: 50 % Glycerol, 0.01M PBS, PH 7.4

Preservative: ProClin

Precaution of Use: This product contains ProClin: a POISONOUS AND HAZARDOUS SUBSTANCE which should be handled by trained staff only.

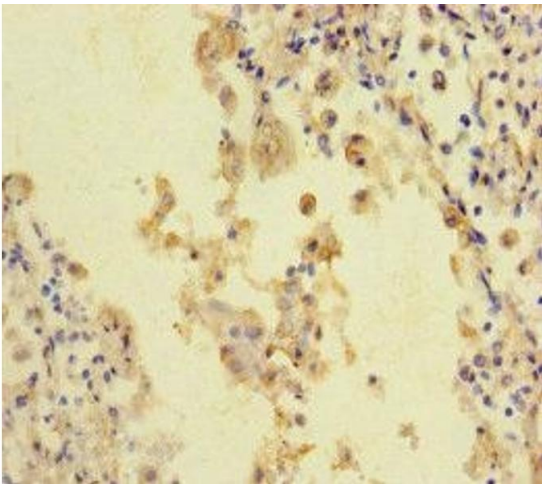
Storage: -20 °C,-80 °C

Storage Comment: Upon receipt, store at -20°C or -80°C. Avoid repeated freeze.



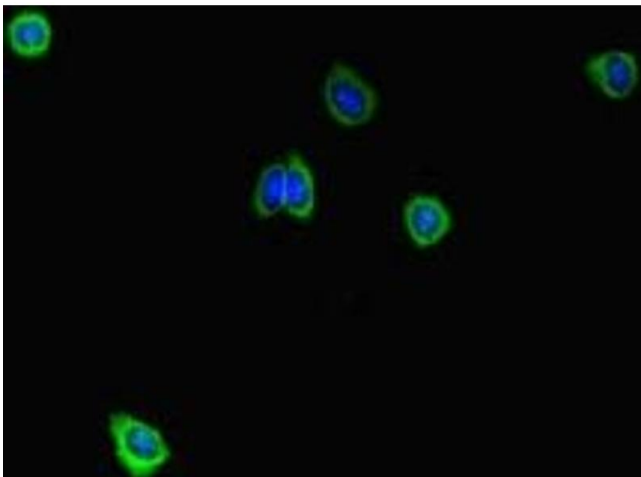
Immunohistochemistry

Image 1. Immunohistochemistry of paraffin-embedded human breast cancer using ABIN7168626 at dilution of 1:100



Immunohistochemistry

Image 2. Immunohistochemistry of paraffin-embedded human lung cancer using ABIN7168626 at dilution of 1:100



Immunofluorescence

Image 3. Immunofluorescent analysis of HepG2 cells using ABIN7168626 at dilution of 1:100 and Alexa Fluor 488-conjugated AffiniPure Goat Anti-Rabbit IgG(H+L)