

Datasheet for ABIN7168647  
**anti-SEC14L2 antibody (AA 233-358)**[Go to Product page](#)

## 4 Images

## Overview

Quantity:	100 µg
Target:	SEC14L2
Binding Specificity:	AA 233-358
Reactivity:	Human
Host:	Rabbit
Clonality:	Polyclonal
Conjugate:	This SEC14L2 antibody is un-conjugated
Application:	Western Blotting (WB), ELISA, Immunohistochemistry (IHC), Immunofluorescence (IF)

## Product Details

Immunogen:	Recombinant Human SEC14-like protein 2 protein (233-358AA)
Isotype:	IgG
Cross-Reactivity:	Human
Purification:	>95%, Protein G purified

## Target Details

Target:	SEC14L2
Alternative Name:	SEC14L2 ( <a href="#">SEC14L2 Products</a> )
Background:	Background: Carrier protein. Binds to some hydrophobic molecules and promotes their transfer between the different cellular sites. Binds with high affinity to alpha-tocopherol. Also binds with

## Target Details

a weaker affinity to other tocopherols and to tocotrienols. May have a transcriptional activatory activity via its association with alpha-tocopherol. Probably recognizes and binds some squalene structure, suggesting that it may regulate cholesterol biosynthesis by increasing the transfer of squalene to a metabolic active pool in the cell.

Aliases: Alpha tocopherol associated protein antibody, Alpha-tocopherol-associated protein antibody, C22orf6 antibody, hTAP antibody, KIAA1186 antibody, KIAA1658 antibody, MGC65053 antibody, OTTHUMP00000198972 antibody, OTTHUMP00000198973 antibody, OTTHUMP00000198974 antibody, OTTHUMP00000199021 antibody, S14L2\_HUMAN antibody, SEC14 (S. cerevisiae) like 2 antibody, SEC14 like 2 (S. cerevisiae) antibody, SEC14 like protein 2 antibody, SEC14-like protein 2 antibody, Sec14l2 antibody, SPF antibody, Squalene transfer protein antibody, Supernatant protein factor antibody, TAP antibody, TAP1 antibody, tocopherol-associated protein antibody

UniProt: [O76054](#)

## Application Details

Application Notes: Recommended dilution: WB:1:500-1:5000, IHC:1:200-1:500, IF:1:50-1:200,

Restrictions: For Research Use only

## Handling

Format: Liquid

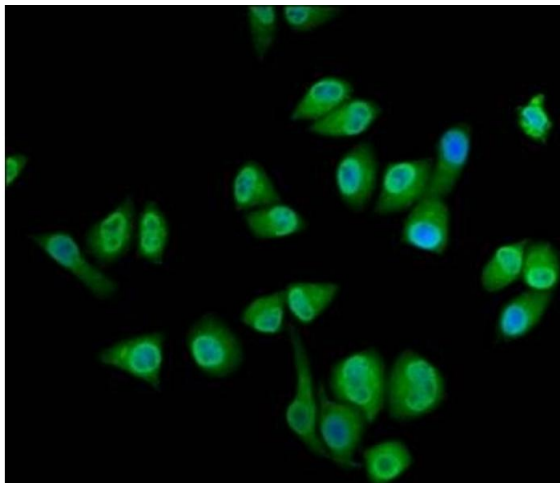
Buffer: Preservative: 0.03 % Proclin 300  
Constituents: 50 % Glycerol, 0.01M PBS, pH 7.4

Preservative: ProClin

Precaution of Use: This product contains ProClin: a POISONOUS AND HAZARDOUS SUBSTANCE which should be handled by trained staff only.

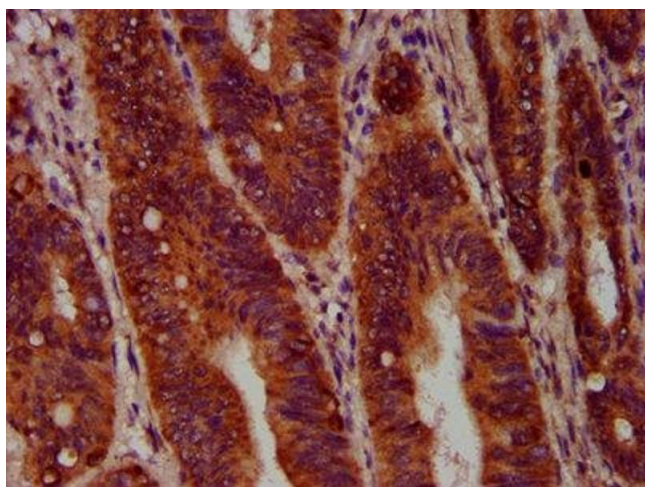
Storage: -20 °C, -80 °C

Storage Comment: Upon receipt, store at -20°C or -80°C. Avoid repeated freeze.



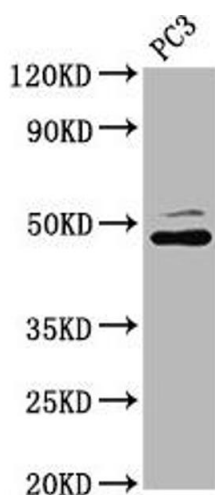
#### Immunofluorescence

**Image 1.** Immunofluorescence staining of HeLa cells with ABIN7168647 at 1:133, counter-stained with DAPI. The cells were fixed in 4% formaldehyde, permeabilized using 0.2% Triton X-100 and blocked in 10% normal Goat Serum. The cells were then incubated with the antibody overnight at 4°C. The secondary antibody was Alexa Fluor 488-conjugated AffiniPure Goat Anti-Rabbit IgG(H+L).



#### Immunohistochemistry

**Image 2.** IHC image of ABIN7168647 diluted at 1:400 and staining in paraffin-embedded human colon cancer performed on a Leica Bond™ system. After dewaxing and hydration, antigen retrieval was mediated by high pressure in a citrate buffer (pH 6.0). Section was blocked with 10% normal goat serum 30min at RT. Then primary antibody (1% BSA) was incubated at 4°C overnight. The primary is detected by a biotinylated secondary antibody and visualized using an HRP conjugated SP system.



#### Western Blotting

**Image 3.** Western Blot Positive WB detected in: PC-3 whole cell lysate All lanes: SEC14L2 antibody at 4.28 µg/mL Secondary Goat polyclonal to rabbit IgG at 1/50000 dilution Predicted band size: 47, 45, 37 kDa Observed band size: 47 kDa

Please check the [product details page](#) for more images. Overall 4 images are available for ABIN7168647.