

Datasheet for ABIN7168690
anti-SFRP5 antibody (AA 169-261)[Go to Product page](#)

1 Image

Overview

Quantity:	100 µg
Target:	SFRP5
Binding Specificity:	AA 169-261
Reactivity:	Human
Host:	Rabbit
Clonality:	Polyclonal
Conjugate:	This SFRP5 antibody is un-conjugated
Application:	Immunohistochemistry (IHC), ELISA

Product Details

Immunogen:	Recombinant Human Secreted frizzled-related protein 5 protein (169-261AA)
Isotype:	IgG
Cross-Reactivity:	Human
Purification:	>95%, Protein G purified

Target Details

Target:	SFRP5
Alternative Name:	SFRP5 (SFRP5 Products)
Background:	Background: Soluble frizzled-related proteins (sFRPS) function as modulators of Wnt signaling through direct interaction with Wnts. They have a role in regulating cell growth and

Target Details

differentiation in specific cell types. SFRP5 may be involved in determining the polarity of photoreceptor, and perhaps, other cells in the retina.

Aliases: SFRP5 antibody, FRP1B antibody, SARP3 antibody, Secreted frizzled-related protein 5 antibody, sFRP-5 antibody, Frizzled-related protein 1b antibody, FRP-1b antibody, Secreted apoptosis-related protein 3 antibody, SARP-3 antibody

UniProt: [Q5T4F7](#)

Pathways: [WNT Signaling](#)

Application Details

Application Notes: Recommended dilution: IHC:1:200-1:500,

Restrictions: For Research Use only

Handling

Format: Liquid

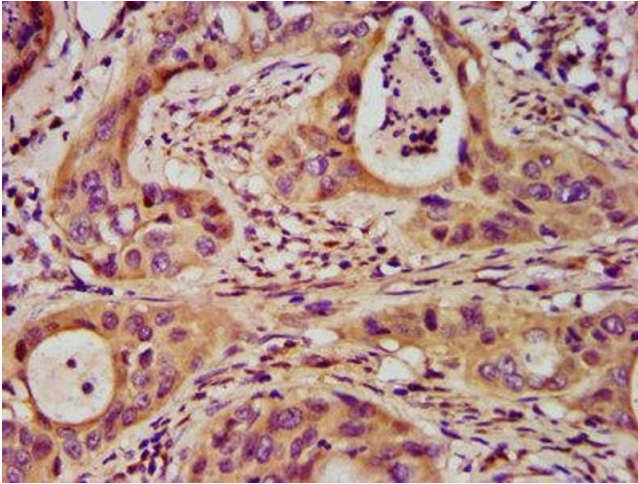
Buffer: Preservative: 0.03 % Proclin 300
Constituents: 50 % Glycerol, 0.01M PBS, pH 7.4

Preservative: ProClin

Precaution of Use: This product contains ProClin: a POISONOUS AND HAZARDOUS SUBSTANCE which should be handled by trained staff only.

Storage: -20 °C, -80 °C

Storage Comment: Upon receipt, store at -20°C or -80°C. Avoid repeated freeze.



Immunohistochemistry

Image 1. IHC image of ABIN7168690 diluted at 1:200 and staining in paraffin-embedded human cervical cancer performed on a Leica Bond™ system. After dewaxing and hydration, antigen retrieval was mediated by high pressure in a citrate buffer (pH 6.0). Section was blocked with 10% normal goat serum 30min at RT. Then primary antibody (1% BSA) was incubated at 4°C overnight. The primary is detected by a biotinylated secondary antibody and visualized using an HRP conjugated SP system.