

Datasheet for ABIN7168743

anti-PLA2R1 antibody (AA 870-1130)[Go to Product page](#)**1** Image

Overview

Quantity:	100 µL
Target:	PLA2R1
Binding Specificity:	AA 870-1130
Reactivity:	Human
Host:	Rabbit
Clonality:	Polyclonal
Conjugate:	This PLA2R1 antibody is un-conjugated
Application:	Western Blotting (WB), ELISA

Product Details

Immunogen:	Recombinant Human Secretory phospholipase A2 receptor protein (870-1130AA)
Isotype:	IgG
Cross-Reactivity:	Human
Purification:	Antigen Affinity Purified

Target Details

Target:	PLA2R1
Alternative Name:	PLA2R1 (PLA2R1 Products)
Background:	Background: Receptor for secretory phospholipase A2 (sPLA2). Acts as a receptor for phospholipase sPLA2-IB/PLA2G1B but not sPLA2-IIA/PLA2G2A. Also able to bind to snake PA2-

Target Details

like toxins. Although its precise function remains unclear, binding of sPLA2 to its receptor participates in both positive and negative regulation of sPLA2 functions as well as clearance of sPLA2. Binding of sPLA2-IB/PLA2G1B induces various effects depending on the cell type, such as activation of the mitogen-activated protein kinase (MAPK) cascade to induce cell proliferation, the production of lipid mediators, selective release of arachidonic acid in bone marrow-derived mast cells. In neutrophils, binding of sPLA2-IB/PLA2G1B can activate p38 MAPK to stimulate elastase release and cell adhesion. May be involved in responses in proinflammatory cytokine productions during endotoxic shock. Also has endocytic properties and rapidly internalizes sPLA2 ligands, which is particularly important for the clearance of extracellular sPLA2s to protect their potent enzymatic activities. The soluble secretory phospholipase A2 receptor form is circulating and acts as a negative regulator of sPLA2 functions by blocking the biological functions of sPLA2-IB/PLA2G1B.

Aliases: 180 kDa secretory phospholipase A2 receptor antibody, C-type lectin domain family 13 member C antibody, CLEC13C antibody, M type receptor antibody, M-type receptor antibody, Phospholipase A2 receptor 1 antibody, PLA2 R antibody, PLA2-R antibody, PLA2G1R antibody, PLA2IR antibody, PLA2R antibody, PLA2R_HUMAN antibody, PLA2R1 antibody, Soluble PLA2-R antibody, Soluble PLA2R antibody, Soluble secretory phospholipase A2 receptor antibody

UniProt: [Q13018](#)

Pathways: [Positive Regulation of Response to DNA Damage Stimulus](#)

Application Details

Application Notes: Recommended dilution: WB:1:1000-1:5000,

Restrictions: For Research Use only

Handling

Format: Liquid

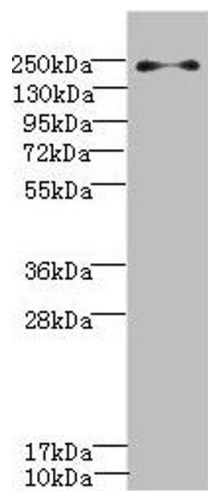
Buffer: PBS with 0.02 % sodium azide, 50 % glycerol, pH 7.3.

Preservative: Sodium azide

Precaution of Use: This product contains Sodium azide: a POISONOUS AND HAZARDOUS SUBSTANCE which should be handled by trained staff only.

Storage: -20 °C,-80 °C

Storage Comment: Upon receipt, store at -20°C or -80°C. Avoid repeated freeze.



Western Blotting

Image 1. Western blot All lanes: PLA2R1 antibody IgG at 0.78 µg/mL + Jurkat whole cell lysate Secondary Goat polyclonal to rabbit IgG at 1/10000 dilution Predicted band size: 169, 153 kDa Observed band size: 169 kDa