

Datasheet for ABIN7168763
anti-SCLY antibody (AA 3-138)[Go to Product page](#)

1 Image

Overview

Quantity:	100 µg
Target:	SCLY
Binding Specificity:	AA 3-138
Reactivity:	Human
Host:	Rabbit
Clonality:	Polyclonal
Conjugate:	This SCLY antibody is un-conjugated
Application:	ELISA, Immunohistochemistry (IHC)

Product Details

Immunogen:	Recombinant Human Selenocysteine lyase protein (3-138AA)
Isotype:	IgG
Cross-Reactivity:	Human
Purification:	>95%, Protein G purified

Target Details

Target:	SCLY
Alternative Name:	SCLY (SCLY Products)
Background:	Background: Catalyzes the decomposition of L-selenocysteine to L-alanine and elemental selenium.

Target Details

Aliases: hSCL antibody, Putative selenocysteine lyase antibody, SCL antibody, scly antibody, SCLY_HUMAN antibody, Selenocysteine lyase antibody

UniProt: [Q96115](#)

Pathways: [Stem Cell Maintenance](#)

Application Details

Application Notes: Recommended dilution: IHC:1:500-1:1000,

Restrictions: For Research Use only

Handling

Format: Liquid

Buffer: Preservative: 0.03 % Proclin 300
Constituents: 50 % Glycerol, 0.01M PBS, pH 7.4

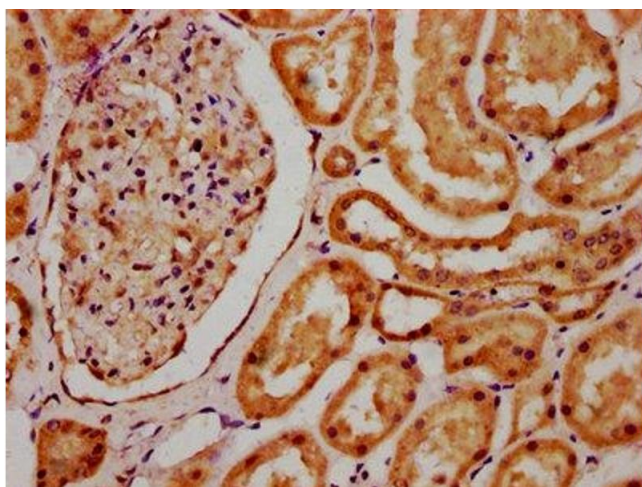
Preservative: ProClin

Precaution of Use: This product contains ProClin: a POISONOUS AND HAZARDOUS SUBSTANCE which should be handled by trained staff only.

Storage: -20 °C,-80 °C

Storage Comment: Upon receipt, store at -20°C or -80°C. Avoid repeated freeze.

Images



Immunohistochemistry

Image 1. IHC image of ABIN7168763 diluted at 1:700 and staining in paraffin-embedded human kidney tissue performed on a Leica Bond™ system. After dewaxing and hydration, antigen retrieval was mediated by high pressure in a citrate buffer (pH 6.0). Section was blocked with 10% normal goat serum 30min at RT. Then primary antibody (1% BSA) was incubated at 4°C overnight. The primary is detected by a biotinylated secondary antibody and visualized using an HRP conjugated SP system.