

Datasheet for ABIN7168784
anti-SEMA3A antibody (AA 357-445)[Go to Product page](#)

3 Images

Overview

| | |
|----------------------|--|
| Quantity: | 100 µg |
| Target: | SEMA3A |
| Binding Specificity: | AA 357-445 |
| Reactivity: | Human |
| Host: | Rabbit |
| Clonality: | Polyclonal |
| Conjugate: | This SEMA3A antibody is un-conjugated |
| Application: | Western Blotting (WB), Immunohistochemistry (IHC), ELISA |

Product Details

| | |
|-------------------|---|
| Immunogen: | Recombinant Human Semaphorin-3A protein (357-445AA) |
| Isotype: | IgG |
| Cross-Reactivity: | Human, Mouse, Rat |
| Purification: | >95%, Protein G purified |

Target Details

| | |
|-------------------|--|
| Target: | SEMA3A |
| Alternative Name: | SEMA3A (SEMA3A Products) |
| Background: | Background: Involved in the development of the olfactory system and in neuronal control of puberty. Induces the collapse and paralysis of neuronal growth cones. Could serve as a ligand |

Target Details

that guides specific growth cones by a motility-inhibiting mechanism. Binds to the complex neuropilin-1/plexin-1.

Aliases: SEMA3A antibody, SEMAD antibody, Semaphorin-3A antibody, Semaphorin III antibody, Sema III antibody

UniProt: [Q14563](#)

Pathways: [Regulation of Cell Size](#)

Application Details

Application Notes: Recommended dilution: WB:1:500-1:5000, IHC:1:200-1:500,

Restrictions: For Research Use only

Handling

Format: Liquid

Buffer: Preservative: 0.03 % Proclin 300
Constituents: 50 % Glycerol, 0.01M PBS, pH 7.4

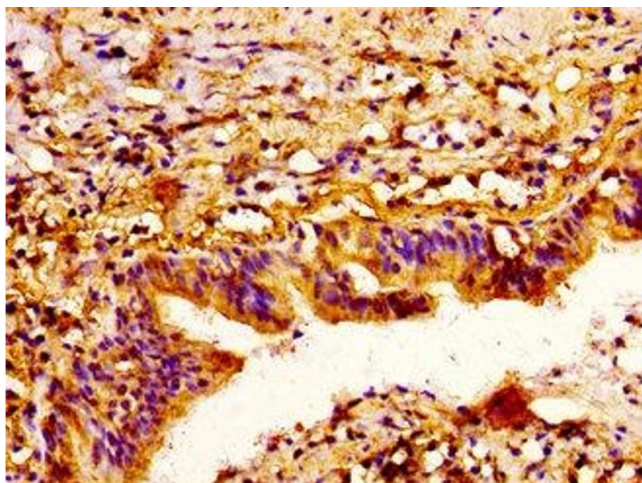
Preservative: ProClin

Precaution of Use: This product contains ProClin: a POISONOUS AND HAZARDOUS SUBSTANCE which should be handled by trained staff only.

Storage: -20 °C,-80 °C

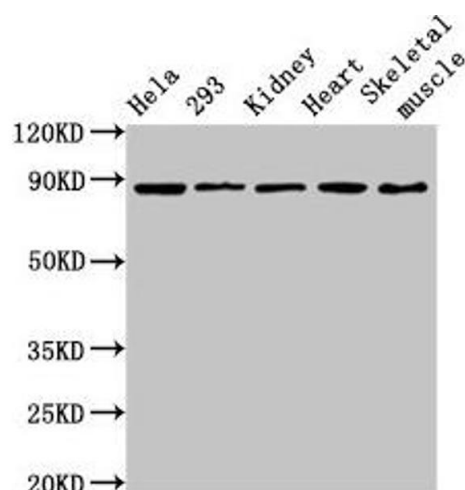
Storage Comment: Upon receipt, store at -20°C or -80°C. Avoid repeated freeze.

Images



Immunohistochemistry

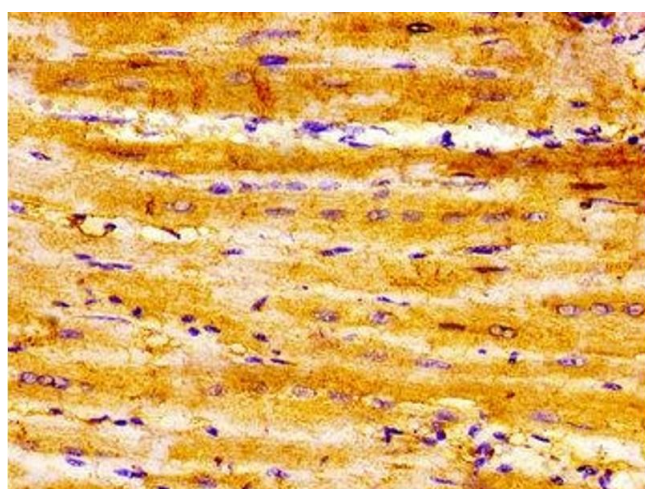
Image 1. IHC image of ABIN7168784 diluted at 1:300 and staining in paraffin-embedded human lung cancer performed on a Leica Bond™ system. After dewaxing and hydration, antigen retrieval was mediated by high pressure in a citrate buffer (pH 6.0). Section was blocked with 10% normal goat serum 30min at RT. Then primary antibody (1% BSA) was incubated at 4°C overnight. The primary is detected by a biotinylated secondary antibody and



visualized using an HRP conjugated ABC system.

Western Blotting

Image 2. Western Blot Positive WB detected in: HeLa whole cell lysate, 293 whole cell lysate, Rat kidney tissue, Mouse heart tissue, Mouse skeletal muscle tissue. All lanes: SEMA3A antibody at 3.6 µg/mL. Secondary Goat polyclonal to rabbit IgG at 1/50000 dilution. Predicted band size: 89 kDa. Observed band size: 89 kDa.



Immunohistochemistry

Image 3. IHC image of ABIN7168784 diluted at 1:300 and staining in paraffin-embedded human heart tissue performed on a Leica Bond™ system. After dewaxing and hydration, antigen retrieval was mediated by high pressure in a citrate buffer (pH 6.0). Section was blocked with 10% normal goat serum 30min at RT. Then primary antibody (1% BSA) was incubated at 4°C overnight. The primary is detected by a biotinylated secondary antibody and visualized using an HRP conjugated SP system.