

Datasheet for ABIN7168811
anti-SEMA5A antibody (AA 201-400)[Go to Product page](#)

3 Images

Overview

Quantity:	100 µg
Target:	SEMA5A
Binding Specificity:	AA 201-400
Reactivity:	Human
Host:	Rabbit
Clonality:	Polyclonal
Conjugate:	This SEMA5A antibody is un-conjugated
Application:	ELISA, Immunohistochemistry (IHC), Immunofluorescence (IF)

Product Details

Immunogen:	Recombinant Human Semaphorin-5A protein (201-400AA)
Isotype:	IgG
Cross-Reactivity:	Human
Purification:	>95%, Protein G purified

Target Details

Target:	SEMA5A
Alternative Name:	SEMA5A (SEMA5A Products)
Background:	Background: Bifunctional axonal guidance cue regulated by sulfated proteoglycans, attractive effects result from interactions with heparan sulfate proteoglycans (HSPGs), while the

Target Details

inhibitory effects depend on interactions with chondroitin sulfate proteoglycans (CSPGs).
Ligand for receptor PLXNB3. In glioma cells, SEMA5A stimulation of PLXNB3 results in the disassembly of F-actin stress fibers, disruption of focal adhesions and cellular collapse as well as inhibition of cell migration and invasion through ARHGDIA-mediated inactivation of RAC1.
May promote angiogenesis by increasing endothelial cell proliferation and migration and inhibiting apoptosis.
Aliases: SEMA5A antibody, SEMAF antibody, Semaphorin-5A antibody, Semaphorin-F antibody, Sema F antibody

UniProt: [Q13591](#)

Application Details

Application Notes: Recommended dilution: IHC:1:20-1:200, IF:1:50-1:500,

Restrictions: For Research Use only

Handling

Format: Liquid

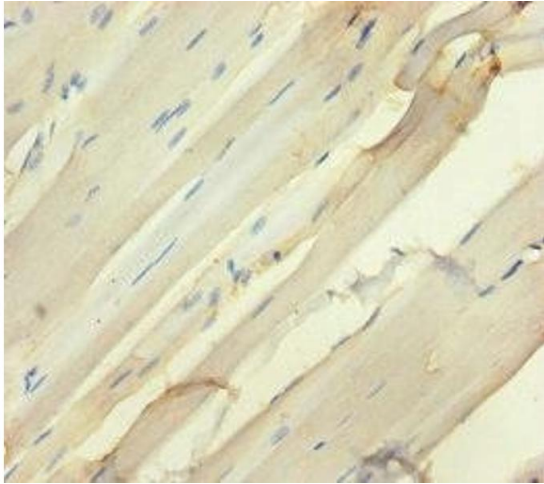
Buffer: Preservative: 0.03 % Proclin 300
Constituents: 50 % Glycerol, 0.01M PBS, PH 7.4

Preservative: ProClin

Precaution of Use: This product contains ProClin: a POISONOUS AND HAZARDOUS SUBSTANCE which should be handled by trained staff only.

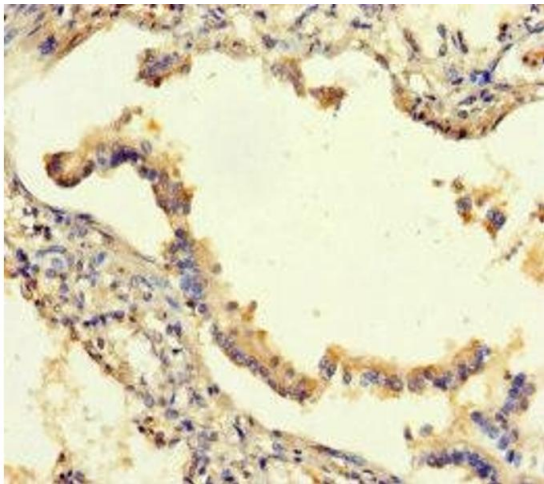
Storage: -20 °C,-80 °C

Storage Comment: Upon receipt, store at -20°C or -80°C. Avoid repeated freeze.



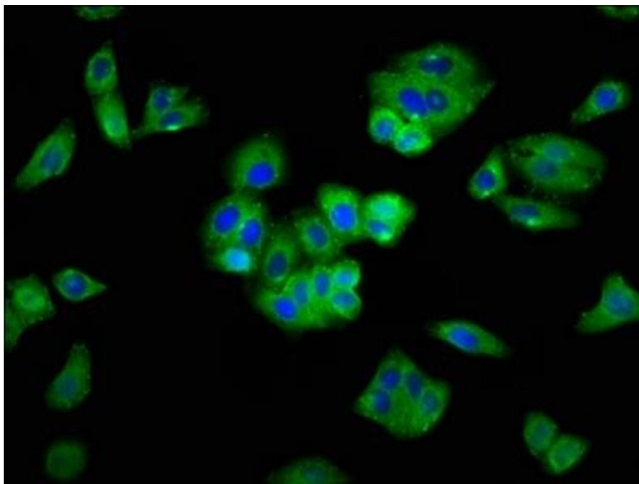
Immunohistochemistry

Image 1. Immunohistochemistry of paraffin-embedded human skeletal muscle tissue using ABIN7168811 at dilution of 1:100



Immunohistochemistry

Image 2. Immunohistochemistry of paraffin-embedded human lung tissue using ABIN7168811 at dilution of 1:100



Immunofluorescence

Image 3. Immunofluorescence staining of HepG2 cells with ABIN7168811 at 1:400, counter-stained with DAPI. The cells were fixed in 4% formaldehyde, permeabilized using 0.2% Triton X-100 and blocked in 10% normal Goat Serum. The cells were then incubated with the antibody overnight at 4°C. The secondary antibody was Alexa Fluor 488-conjugated AffiniPure Goat Anti-Rabbit IgG(H+L).