

Datasheet for ABIN7168823
anti-SEMA6B antibody (AA 756-888)[Go to Product page](#)

2 Images

Overview

Quantity:	100 µg
Target:	SEMA6B
Binding Specificity:	AA 756-888
Reactivity:	Human
Host:	Rabbit
Clonality:	Polyclonal
Conjugate:	This SEMA6B antibody is un-conjugated
Application:	ELISA, Immunofluorescence (IF), Immunohistochemistry (IHC)

Product Details

Immunogen:	Recombinant Human Semaphorin-6B protein (756-888AA)
Isotype:	IgG
Cross-Reactivity:	Human
Purification:	>95%, Protein G purified

Target Details

Target:	SEMA6B
Alternative Name:	SEMA6B (SEMA6B Products)
Background:	Background: May play a role in both peripheral and central nervous system development. Aliases: SEM-SEMA-Y antibody, SEM6B_HUMAN antibody, sema domain, transmembrane

Target Details

domain (TM), and cytoplasmic domain, (semaphorin) 6B antibody, Sema Z antibody, SEMA-VIB antibody, Sema6b antibody, SEMAN antibody, semaphorin VIB antibody, Semaphorin-6B antibody, semaphorin-6Ba antibody, Semaphorin-Z antibody

UniProt: [Q9H3T3](#)

Application Details

Application Notes: Recommended dilution: IHC:1:20-1:200, IF:1:20-1:200,

Restrictions: For Research Use only

Handling

Format: Liquid

Buffer: Preservative: 0.03 % Proclin 300
Constituents: 50 % Glycerol, 0.01M PBS, pH 7.4

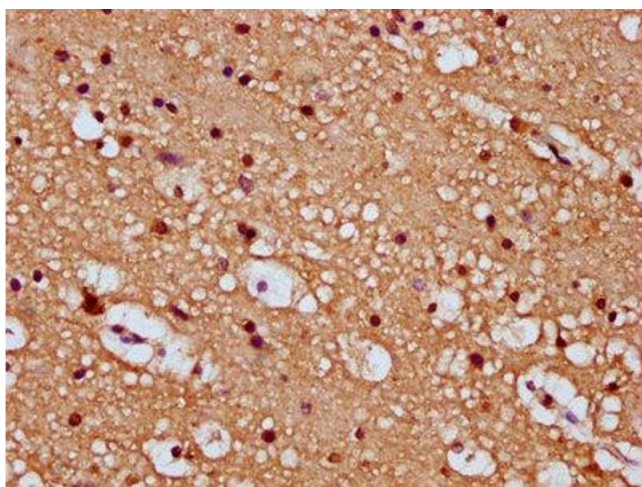
Preservative: ProClin

Precaution of Use: This product contains ProClin: a POISONOUS AND HAZARDOUS SUBSTANCE which should be handled by trained staff only.

Storage: -20 °C,-80 °C

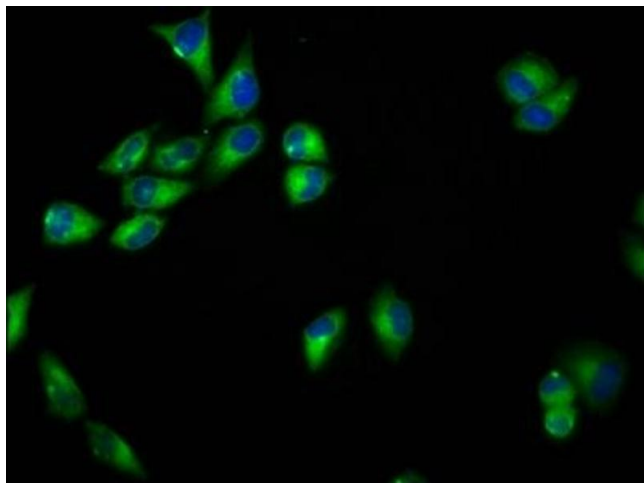
Storage Comment: Upon receipt, store at -20°C or -80°C. Avoid repeated freeze.

Images



Immunohistochemistry

Image 1. IHC image of ABIN7168823 diluted at 1:100 and staining in paraffin-embedded human brain tissue performed on a Leica Bond™ system. After dewaxing and hydration, antigen retrieval was mediated by high pressure in a citrate buffer (pH 6.0). Section was blocked with 10% normal goat serum 30min at RT. Then primary antibody (1% BSA) was incubated at 4°C overnight. The primary is detected by a biotinylated secondary antibody and visualized using an HRP conjugated SP system.



Immunofluorescence

Image 2. Immunofluorescence staining of HeLa cells with ABIN7168823 at 1:33, counter-stained with DAPI. The cells were fixed in 4% formaldehyde, permeabilized using 0.2% Triton X-100 and blocked in 10% normal Goat Serum. The cells were then incubated with the antibody overnight at 4°C. The secondary antibody was Alexa Fluor 488-conjugated AffiniPure Goat Anti-Rabbit IgG(H+L).