

Datasheet for ABIN7168827
anti-SEMA6D antibody (AA 913-1068)[Go to Product page](#)

2 Images

Overview

Quantity:	100 µg
Target:	SEMA6D
Binding Specificity:	AA 913-1068
Reactivity:	Human
Host:	Rabbit
Clonality:	Polyclonal
Conjugate:	This SEMA6D antibody is un-conjugated
Application:	Western Blotting (WB), ELISA, Immunofluorescence (IF)

Product Details

Immunogen:	Recombinant Human Semaphorin-6D protein (913-1068AA)
Isotype:	IgG
Cross-Reactivity:	Human
Purification:	>95%, Protein G purified

Target Details

Target:	SEMA6D
Alternative Name:	SEMA6D (SEMA6D Products)
Background:	Background: Shows growth cone collapsing activity on dorsal root ganglion (DRG) neurons in vitro. May be a stop signal for the DRG neurons in their target areas, and possibly also for other

Target Details

neurons. May also be involved in the maintenance and remodeling of neuronal connections.

Aliases: SEMA6D antibody, KIAA1479 antibody, Semaphorin-6D antibody

UniProt: [Q8NFY4](#)

Pathways: [Smooth Muscle Cell Migration](#)

Application Details

Application Notes: Recommended dilution: WB:1:500-1:5000, IF:1:50-1:200,

Restrictions: For Research Use only

Handling

Format: Liquid

Buffer: Preservative: 0.03 % Proclin 300
Constituents: 50 % Glycerol, 0.01M PBS, pH 7.4

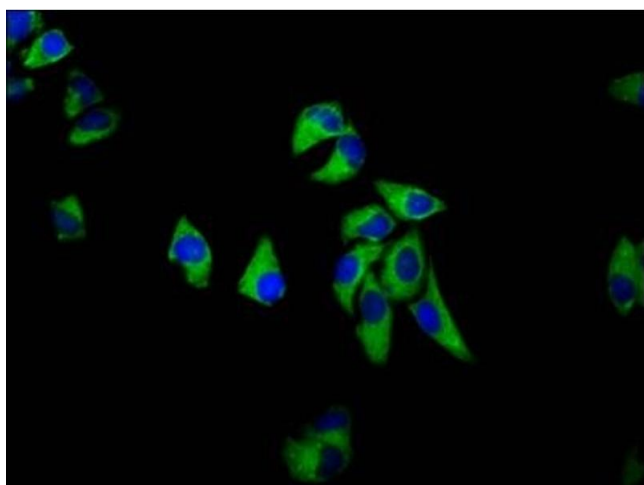
Preservative: ProClin

Precaution of Use: This product contains ProClin: a POISONOUS AND HAZARDOUS SUBSTANCE which should be handled by trained staff only.

Storage: -20 °C, -80 °C

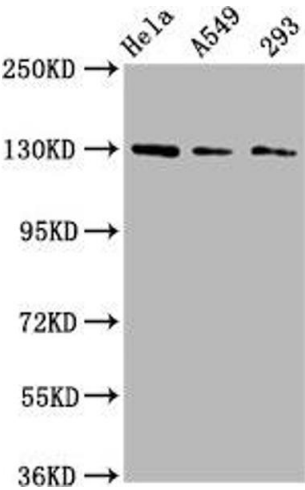
Storage Comment: Upon receipt, store at -20°C or -80°C. Avoid repeated freeze.

Images



Immunofluorescence

Image 1. Immunofluorescence staining of HeLa cells with ABIN7168827 at 1:133, counter-stained with DAPI. The cells were fixed in 4 % formaldehyde, permeabilized using 0.2 % Triton X-100 and blocked in 10 % normal Goat Serum. The cells were then incubated with the antibody overnight at 4 °C. The secondary antibody was Alexa Fluor 488-conjugated AffiniPure Goat Anti-Rabbit IgG(H+L).



Western Blotting

Image 2. Western Blot Positive WB detected in: HeLa whole cell lysate, A549 whole cell lysate, 293 whole cell lysate All lanes: SEMA6D antibody at 3 µg/mL Secondary Goat polyclonal to rabbit IgG at 1/50000 dilution Predicted band size: 120, 114, 112, 116, 118, 55, 68 kDa Observed band size: 130 kDa