

Datasheet for ABIN7168837  
**anti-SEN2 antibody (AA 138-324)**



[Go to Product page](#)

4 Images

### Overview

Quantity:	100 µg
Target:	SEN2
Binding Specificity:	AA 138-324
Reactivity:	Human
Host:	Rabbit
Clonality:	Polyclonal
Conjugate:	This SEN2 antibody is un-conjugated
Application:	Western Blotting (WB), Immunohistochemistry (IHC), ELISA, Immunofluorescence (IF)

### Product Details

Immunogen:	Recombinant Human Sentrin-specific protease 2 protein (138-324AA)
Isotype:	IgG
Cross-Reactivity:	Human, Mouse
Purification:	>95%, Protein G purified

### Target Details

Target:	SEN2
Alternative Name:	SEN2 ( <a href="#">SEN2 Products</a> )
Background:	Background: Protease that catalyzes two essential functions in the SUMO pathway: processing of full-length SUMO1, SUMO2 and SUMO3 to their mature forms and deconjugation of SUMO1,

## Target Details

---

SUMO2 and SUMO3 from targeted proteins. May down-regulate CTNNB1 levels and thereby modulate the Wnt pathway. Deconjugates SUMO2 from MTA1. Plays a dynamic role in adipogenesis by desumoylating and promoting the stabilization of CEBPB (PubMed:20194620).  
Aliases: Axam2 antibody, DKFZp762A2316 antibody, KIAA1331 antibody, Senp2 antibody, SENP2\_HUMAN antibody, Sentrin specific protease 2 antibody, Sentrin-specific protease 2 antibody, Sentrin/SUMO specific protease SENP2 antibody, Sentrin/SUMO-specific protease SENP2 antibody, SMT3 specific isopeptidase 2 antibody, SMT3-specific isopeptidase 2 antibody, Smt3ip2 antibody, SUMO1/sentrin/SMT3 specific peptidase 2 antibody

UniProt: [Q9HC62](#)

Pathways: [Chromatin Binding](#)

## Application Details

---

Application Notes: Recommended dilution: WB:1:500-1:5000, IHC:1:20-1:200, IF:1:50-1:200,

Restrictions: For Research Use only

## Handling

---

Format: Liquid

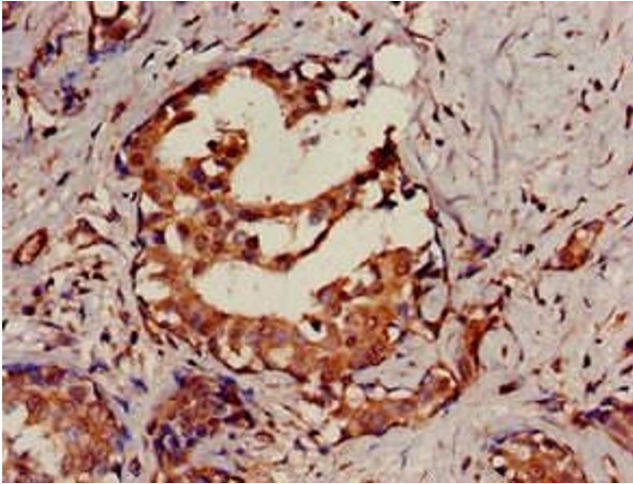
Buffer: Preservative: 0.03 % Proclin 300  
Constituents: 50 % Glycerol, 0.01M PBS, pH 7.4

Preservative: ProClin

Precaution of Use: This product contains ProClin: a POISONOUS AND HAZARDOUS SUBSTANCE which should be handled by trained staff only.

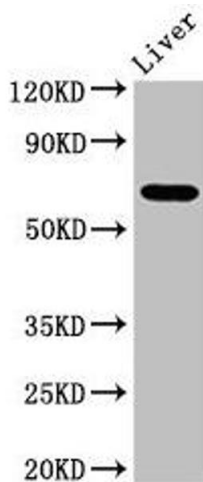
Storage: -20 °C,-80 °C

Storage Comment: Upon receipt, store at -20°C or -80°C. Avoid repeated freeze.



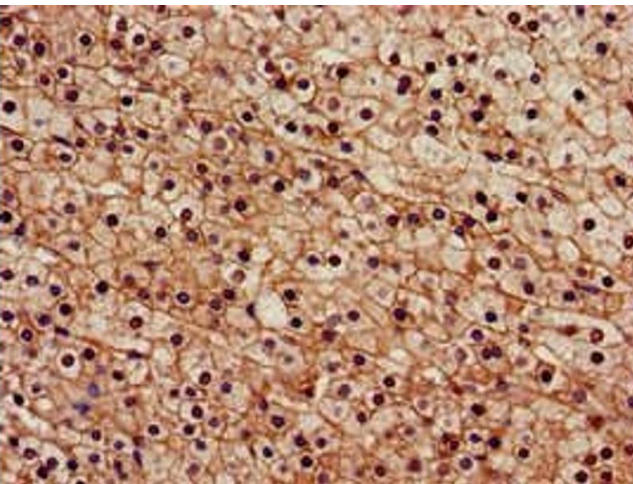
#### Immunohistochemistry

**Image 1.** Immunohistochemistry of paraffin-embedded human breast cancer using ABIN7168837 at dilution of 1:100



#### Western Blotting

**Image 2.** Western Blot Positive WB detected in: Mouse liver tissue All lanes: SENP2 antibody at 3.4 µg/mL Secondary Goat polyclonal to rabbit IgG at 1/50000 dilution Predicted band size: 68, 67 kDa Observed band size: 68 kDa



#### Immunohistochemistry

**Image 3.** Immunohistochemistry of paraffin-embedded human adrenal gland tissue using ABIN7168837 at dilution of 1:100

Please check the [product details page](#) for more images. Overall 4 images are available for ABIN7168837.