

Datasheet for ABIN7168845
anti-SEN7 antibody (AA 128-366)[Go to Product page](#)

1 Image

Overview

Quantity:	100 µg
Target:	SEN7
Binding Specificity:	AA 128-366
Reactivity:	Human
Host:	Rabbit
Clonality:	Polyclonal
Conjugate:	This SEN7 antibody is un-conjugated
Application:	ELISA, Immunohistochemistry (IHC)

Product Details

Immunogen:	Recombinant Human Sentrin-specific protease 7 protein (128-366AA)
Isotype:	IgG
Cross-Reactivity:	Human
Purification:	>95%, Protein G purified

Target Details

Target:	SEN7
Alternative Name:	SEN7 (SEN7 Products)
Background:	Background: Protease that deconjugates SUMO2 and SUMO3 from targeted proteins, but not SUMO1. Catalyzes the deconjugation of poly-SUMO2 and poly-SUMO3 chains. Has very low

Target Details

efficiency in processing full-length SUMO proteins to their mature forms.

Aliases: KIAA1707 antibody, Senp7 antibody, SENP7_HUMAN antibody, Sentrin specific protease antibody, Sentrin-specific protease 7 antibody, Sentrin/SUMO-specific protease SENP7 antibody, SSP2 antibody, SUMO 1 specific protease 2 antibody, SUMO specific protease antibody, SUMO-1-specific protease 2 antibody, SUMO1/sentrin specific peptidase 7 antibody, SUSP2 antibody

UniProt: [Q9BQF6](#)

Application Details

Application Notes: Recommended dilution: IHC:1:500-1:1000,

Restrictions: For Research Use only

Handling

Format: Liquid

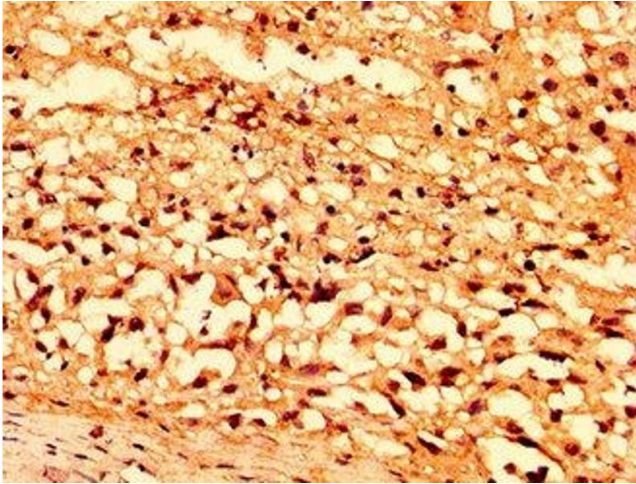
Buffer: Preservative: 0.03 % Proclin 300
Constituents: 50 % Glycerol, 0.01M PBS, pH 7.4

Preservative: ProClin

Precaution of Use: This product contains ProClin: a POISONOUS AND HAZARDOUS SUBSTANCE which should be handled by trained staff only.

Storage: -20 °C, -80 °C

Storage Comment: Upon receipt, store at -20°C or -80°C. Avoid repeated freeze.



Immunohistochemistry

Image 1. IHC image of ABIN7168845 diluted at 1:500 and staining in paraffin-embedded human melanoma performed on a Leica Bond™ system. After dewaxing and hydration, antigen retrieval was mediated by high pressure in a citrate buffer (pH 6.0). Section was blocked with 10% normal goat serum 30min at RT. Then primary antibody (1% BSA) was incubated at 4°C overnight. The primary is detected by a biotinylated secondary antibody and visualized using an HRP conjugated SP system.