

Datasheet for ABIN7168857
anti-Septin 11 antibody (AA 237-429)

3 Images

[Go to Product page](#)

Overview

Quantity:	100 µL
Target:	Septin 11 (SEPT11)
Binding Specificity:	AA 237-429
Reactivity:	Human
Host:	Rabbit
Clonality:	Polyclonal
Conjugate:	This Septin 11 antibody is un-conjugated
Application:	Western Blotting (WB), ELISA, Immunohistochemistry (IHC), Immunofluorescence (IF)

Product Details

Immunogen:	Recombinant Human Septin-11 protein (237-429AA)
Isotype:	IgG
Cross-Reactivity:	Human, Rat
Purification:	>95%, Antigen Affinity purified & Affinity purified

Target Details

Target:	Septin 11 (SEPT11)
Alternative Name:	SEPT11 (SEPT11 Products)
Background:	Background: Filament-forming cytoskeletal GTPase. May play a role in cytokinesis (Potential). May play a role in the cytoarchitecture of neurons, including dendritic arborization and dendritic

Target Details

spines, and in GABAergic synaptic connectivity (By similarity). During *Listeria monocytogenes* infection, not required for the bacterial entry process, but restricts its efficacy.

Aliases: SEP11_HUMAN antibody, SEPT 11 antibody, Sept11 antibody, Septin-11 antibody, Septin11 antibody

UniProt: [Q9NVA2](#)

Application Details

Application Notes: Recommended dilution: WB:1:1000-1:5000, IHC:1:200-1:500, IF:1:50-1:200,

Restrictions: For Research Use only

Handling

Format: Liquid

Buffer: Preservative: 0.03 % Proclin 300
Constituents: 50 % Glycerol, 0.01M PBS, pH 7.4

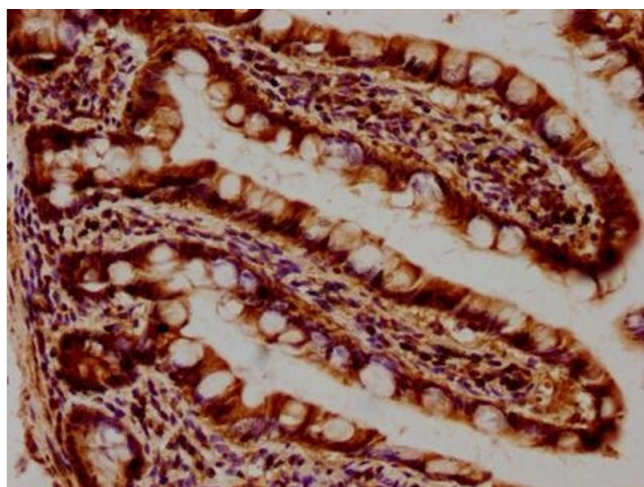
Preservative: ProClin

Precaution of Use: This product contains ProClin: a POISONOUS AND HAZARDOUS SUBSTANCE which should be handled by trained staff only.

Storage: -20 °C,-80 °C

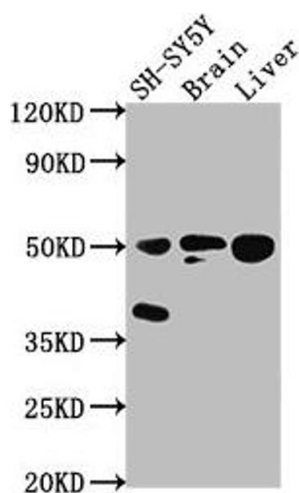
Storage Comment: Upon receipt, store at -20°C or -80°C. Avoid repeated freeze.

Images



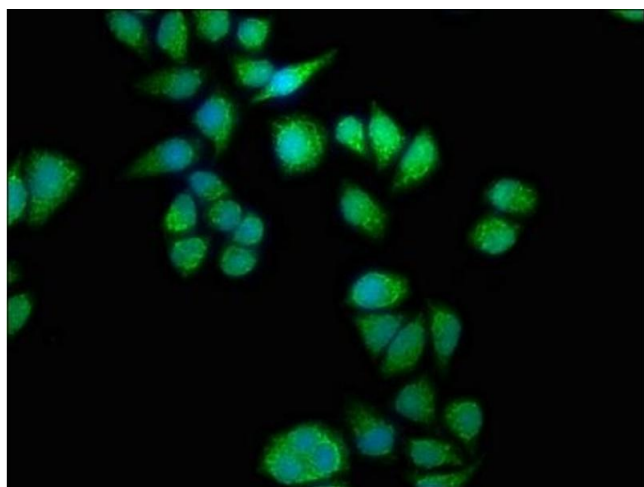
Immunohistochemistry

Image 1. IHC image of ABIN7168857 diluted at 1:400 and staining in paraffin-embedded human small intestine tissue performed on a Leica Bond™ system. After dewaxing and hydration, antigen retrieval was mediated by high pressure in a citrate buffer (pH 6.0). Section was blocked with 10 % normal goat serum 30 min at RT. Then primary antibody (1 % BSA) was incubated at 4 °C overnight. The primary is detected by a biotinylated secondary antibody and visualized using an HRP conjugated SP system.



Western Blotting

Image 2. Western Blot Positive WB detected in: SH-SY5Y whole cell lysate, Rat brain tissue, Rat liver tissue All lanes: SEPT11 antibody at 1:2000 Secondary Goat polyclonal to rabbit IgG at 1/50000 dilution Predicted band size: 50, 51 kDa Observed band size: 50 kDa



Immunofluorescence

Image 3. Immunofluorescence staining of HeLa cells with ABIN7168857 at 1:133, counter-stained with DAPI. The cells were fixed in 4 % formaldehyde, permeabilized using 0.2 % Triton X-100 and blocked in 10 % normal Goat Serum. The cells were then incubated with the antibody overnight at 4 °C. The secondary antibody was Alexa Fluor 488-conjugated AffiniPure Goat Anti-Rabbit IgG(H+L).