

Datasheet for ABIN7168865
anti-Septin 2 antibody (AA 1-361)[Go to Product page](#)

2 Images

Overview

Quantity:	100 µg
Target:	Septin 2 (SEPT2)
Binding Specificity:	AA 1-361
Reactivity:	Human
Host:	Rabbit
Clonality:	Polyclonal
Conjugate:	This Septin 2 antibody is un-conjugated
Application:	ELISA, Immunohistochemistry (IHC)

Product Details

Immunogen:	Recombinant Human Septin-2 protein (1-361AA)
Isotype:	IgG
Cross-Reactivity:	Human
Purification:	>95%, Protein G purified

Target Details

Target:	Septin 2 (SEPT2)
Alternative Name:	SEPT2 (SEPT2 Products)
Background:	Background: Filament-forming cytoskeletal GTPase. Required for normal organization of the actin cytoskeleton. Plays a role in the biogenesis of polarized columnar-shaped epithelium by

Target Details

maintaining polyglutamylated microtubules, thus facilitating efficient vesicle transport, and by impeding MAP4 binding to tubulin. Required for the progression through mitosis. Forms a scaffold at the midplane of the mitotic spindle required to maintain CENPE localization at kinetochores and consequently chromosome congression. During anaphase, may be required for chromosome segregation and spindle elongation. Plays a role in ciliogenesis and collective cell movements. In cilia, required for the integrity of the diffusion barrier at the base of the primary cilium that prevents diffusion of transmembrane proteins between the cilia and plasma membranes: probably acts by regulating the assembly of the tectonic-like complex (also named B9 complex) by localizing TMEM231 protein. May play a role in the internalization of 2 intracellular microbial pathogens, *Listeria monocytogenes* and *Shigella flexneri*.

Aliases: SEPTIN2 antibody, DIFF6 antibody, KIAA0158 antibody, NEDD5 antibody, SEPT2 antibody, Septin-2 antibody, Neural precursor cell expressed developmentally down-regulated protein 5 antibody, NEDD-5 antibody

UniProt: [Q15019](#)

Application Details

Application Notes: Recommended dilution: IHC:1:20-1:200,

Restrictions: For Research Use only

Handling

Format: Liquid

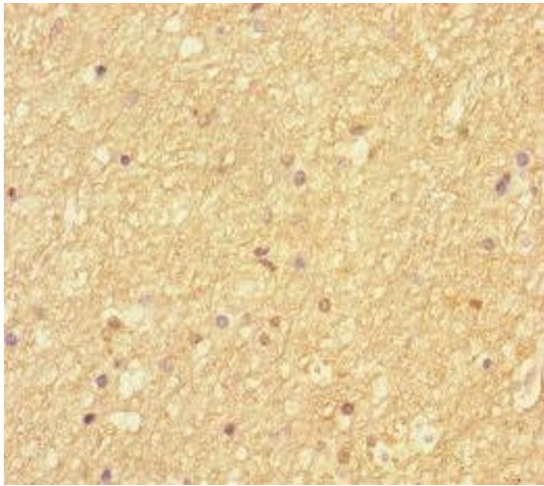
Buffer: Preservative: 0.03 % Proclin 300
Constituents: 50 % Glycerol, 0.01M PBS, PH 7.4

Preservative: ProClin

Precaution of Use: This product contains ProClin: a POISONOUS AND HAZARDOUS SUBSTANCE which should be handled by trained staff only.

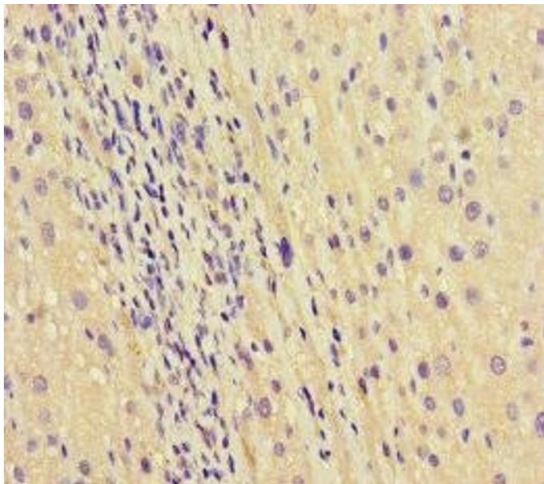
Storage: -20 °C,-80 °C

Storage Comment: Upon receipt, store at -20°C or -80°C. Avoid repeated freeze.



Immunohistochemistry

Image 1. Immunohistochemistry of paraffin-embedded human brain tissue using ABIN7168865 at dilution of 1:100



Immunohistochemistry

Image 2. Immunohistochemistry of paraffin-embedded human liver cancer using ABIN7168865 at dilution of 1:100