

Datasheet for ABIN7168880
anti-SRGN antibody (AA 28-158)[Go to Product page](#)

2 Images

Overview

Quantity:	100 µL
Target:	SRGN
Binding Specificity:	AA 28-158
Reactivity:	Human
Host:	Rabbit
Clonality:	Polyclonal
Conjugate:	This SRGN antibody is un-conjugated
Application:	Immunohistochemistry (IHC), Western Blotting (WB), ELISA

Product Details

Immunogen:	Recombinant Human Serglycin protein (28-158AA)
Isotype:	IgG
Cross-Reactivity:	Human
Purification:	Antigen Affinity Purified

Target Details

Target:	SRGN
Alternative Name:	SRGN (SRGN Products)
Background:	Background: Plays a role in formation of mast cell secretory granules and mediates storage of various compounds in secretory vesicles. Required for storage of some proteases in both

Target Details

connective tissue and mucosal mast cells and for storage of granzyme B in T-lymphocytes. Plays a role in localizing neutrophil elastase in azurophil granules of neutrophils. Mediates processing of MMP2. Plays a role in cytotoxic cell granule-mediated apoptosis by forming a complex with granzyme B which is delivered to cells by perforin to induce apoptosis. Regulates the secretion of TNF-alpha and may also regulate protease secretion. Inhibits bone mineralization.

Aliases: Chondroitin sulfate proteoglycan core protein antibody, Cytolytic granule proteoglycan core protein antibody, FLJ12930 antibody, gp600 antibody, Hematopoietic proteoglycan core protein antibody, Mastocytoma proteoglycan core protein antibody, MGC9289 antibody, OTTHUMP00000019716 antibody, P.PG antibody, PG19 core protein antibody, Pgsg antibody, Platelet proteoglycan core protein antibody, platelet proteoglycan protein core antibody, PLATELET PROTEOGLYCAN PROTEIN CORE, PPG antibody, PPG antibody, PRG antibody, PRG1 antibody, PROTEOGLYCAN 1 antibody, proteoglycan 1, secretory granule antibody, Proteoglycan 10K core protein antibody, Proteoglycan peptide core protein antibody, PROTEOGLYCAN PROTEIN CORE FOR MAST CELL SECRETORY GRANULE antibody, secretory granule proteoglycan 1 antibody, Secretory granule proteoglycan core peptide antibody, Secretory granule proteoglycan core protein antibody, Serglycin antibody, serglycin proteoglycan antibody, Sgc antibody, Srgn antibody, SRGN_HUMAN antibody

UniProt: [P10124](#)

Pathways: [Maintenance of Protein Location](#)

Application Details

Application Notes: Recommended dilution: WB:1:500-1:2000, IHC:1:20-1:200,

Restrictions: For Research Use only

Handling

Format: Liquid

Buffer: PBS with 0.02 % sodium azide, 50 % glycerol, pH 7.3.

Preservative: Sodium azide

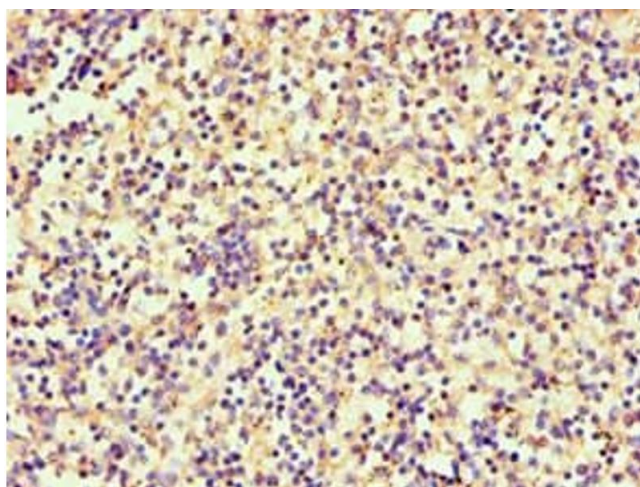
Precaution of Use: This product contains Sodium azide: a POISONOUS AND HAZARDOUS SUBSTANCE which should be handled by trained staff only.

Storage: -20 °C, -80 °C

Handling

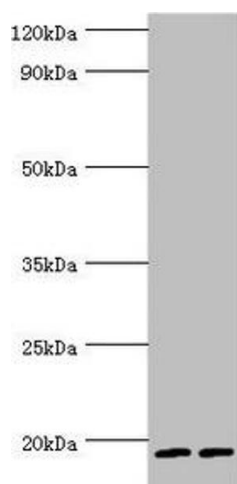
Storage Comment: Upon receipt, store at -20°C or -80°C. Avoid repeated freeze.

Images



Immunohistochemistry

Image 1. Immunohistochemistry of paraffin-embedded human spleen tissue using ABIN7168880 at dilution of 1:100



Western Blotting

Image 2. Western blot All lanes: Serglycin antibody at 9 µg/mL Lane 1: THP-1 whole cell lysate Lane 2: HL60 whole cell lysate Secondary Goat polyclonal to rabbit IgG at 1/10000 dilution Predicted band size: 18 kDa Observed band size: 18 kDa