



[Go to Product page](#)

Datasheet for ABIN7168900
anti-SPTLC3 antibody (AA 1-58)

4 Images

Overview

Quantity:	100 µg
Target:	SPTLC3
Binding Specificity:	AA 1-58
Reactivity:	Human
Host:	Rabbit
Clonality:	Polyclonal
Conjugate:	This SPTLC3 antibody is un-conjugated
Application:	Western Blotting (WB), Immunohistochemistry (IHC), ELISA, Immunofluorescence (IF)

Product Details

Immunogen:	Recombinant Human Serine palmitoyltransferase 3 protein (1-58AA)
Isotype:	IgG
Cross-Reactivity:	Human, Mouse
Purification:	Antigen Affinity Purified

Target Details

Target:	SPTLC3
Alternative Name:	SPTLC3 (SPTLC3 Products)
Background:	Background: Serine palmitoyltransferase (SPT). The heterodimer formed with LCB1/SPTLC1 constitutes the catalytic core. The composition of the serine palmitoyltransferase (SPT)

Target Details

complex determines the substrate preference. The SPTLC1-SPTLC3-SPTSSA isozyme uses both C14-CoA and C16-CoA as substrates, while the SPTLC1-SPTLC3-SPTSSB has the ability to use a broader range of acyl-CoAs without apparent preference.

Aliases: LCB 3 antibody, LCB2b antibody, Long chain base biosynthesis protein 2b antibody, Long chain base biosynthesis protein 3 antibody, Serine palmitoyltransferase 3 antibody, Serine-palmitoyl-CoA transferase 3 antibody, SPT 3 antibody, SPTC3_HUMAN antibody, SPTLC3 antibody

UniProt: [Q9NUV7](#)

Application Details

Application Notes: Recommended dilution: WB:1:500-1:5000, IHC:1:20-1:200, IF:1:50-1:200,

Restrictions: For Research Use only

Handling

Format: Liquid

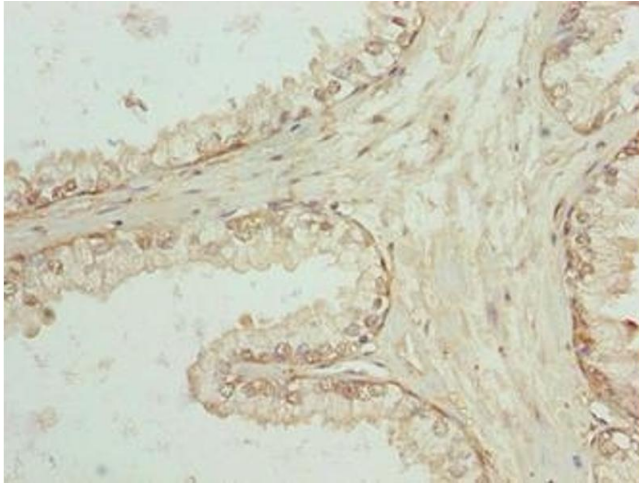
Buffer: Preservative: 0.03 % Proclin 300
Constituents: 50 % Glycerol, 0.01M PBS, PH 7.4

Preservative: ProClin

Precaution of Use: This product contains ProClin: a POISONOUS AND HAZARDOUS SUBSTANCE which should be handled by trained staff only.

Storage: -20 °C,-80 °C

Storage Comment: Upon receipt, store at -20°C or -80°C. Avoid repeated freeze.



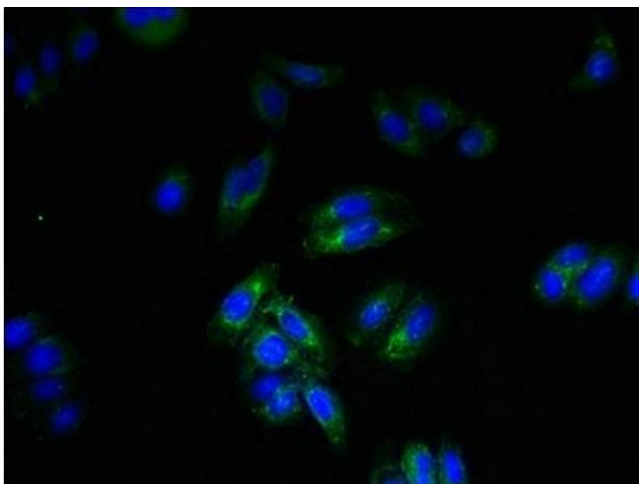
Immunohistochemistry

Image 1. Immunohistochemistry of paraffin-embedded human prostate cancer using ABIN7168900 at dilution of 1:100



Western Blotting

Image 2. Western blot All lanes: SPTLC3 antibody at 0.2 μ g/mL Lane 1: Mouse kidney tissue Lane 2: U87 whole cell lysate Secondary Goat polyclonal to rabbit IgG at 1/10000 dilution Predicted band size: 63, 20 kDa Observed band size: 63 kDa



Immunofluorescence

Image 3. Immunofluorescent analysis of HepG2 cells using ABIN7168900 at dilution of 1:100 and Alexa Fluor 488-conjugated AffiniPure Goat Anti-Rabbit IgG(H+L)

Please check the [product details page](#) for more images. Overall 4 images are available for ABIN7168900.