

Datasheet for ABIN7168921
anti-HTRA2 antibody (AA 334-458)

5 Images



[Go to Product page](#)

Overview

Quantity:	100 µg
Target:	HTRA2
Binding Specificity:	AA 334-458
Reactivity:	Human
Host:	Rabbit
Clonality:	Polyclonal
Conjugate:	This HTRA2 antibody is un-conjugated
Application:	Western Blotting (WB), ELISA, Immunohistochemistry (IHC), Immunoprecipitation (IP)

Product Details

Immunogen:	Recombinant Human Serine protease HTRA2, mitochondrial protein (334-458AA)
Isotype:	IgG
Cross-Reactivity:	Human
Purification:	>95%, Protein G purified

Target Details

Target:	HTRA2
Alternative Name:	HTRA2 (HTRA2 Products)
Background:	Background: Serine protease that shows proteolytic activity against a non-specific substrate beta-casein. Promotes or induces cell death either by direct binding to and inhibition of BIRC

Target Details

proteins (also called inhibitor of apoptosis proteins, IAPs), leading to an increase in caspase activity, or by a BIRC inhibition-independent, caspase-independent and serine protease activity-dependent mechanism. Cleaves THAP5 and promotes its degradation during apoptosis.

Isoform 2 seems to be proteolytically inactive.

Aliases: High temperature requirement protein A2 antibody, HTRA 2 antibody, HtrA like serine protease antibody, HtrA serine peptidase 2 antibody, HtrA, E. coli, homolog of, 2 antibody, HtrA2 antibody, HTRA2_HUMAN antibody, mitochondrial antibody, Omi stress regulated endoprotease antibody, Omi stress-regulated endoprotease antibody, PARK 13 antibody, PARK13 antibody, Protease serine 25 antibody, PRSS 25 antibody, PRSS25 antibody, Serine protease 25 antibody, Serine protease HTRA2 antibody, Serine protease HTRA2 mitochondrial antibody, Serine protease htra2 mitochondrial precursor antibody, Serine protease omi antibody, Serine proteinase OMI antibody

UniProt: [O43464](#)

Pathways: [Positive Regulation of Endopeptidase Activity](#)

Application Details

Application Notes: Recommended dilution: WB:1:500-1:5000, IHC:1:20-1:200, IP:1:200-1:2000,

Restrictions: For Research Use only

Handling

Format: Liquid

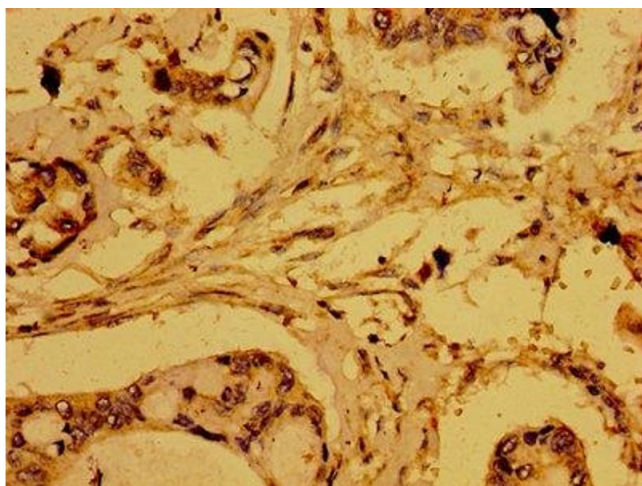
Buffer: Preservative: 0.03 % Proclin 300
Constituents: 50 % Glycerol, 0.01M PBS, pH 7.4

Preservative: ProClin

Precaution of Use: This product contains ProClin: a POISONOUS AND HAZARDOUS SUBSTANCE which should be handled by trained staff only.

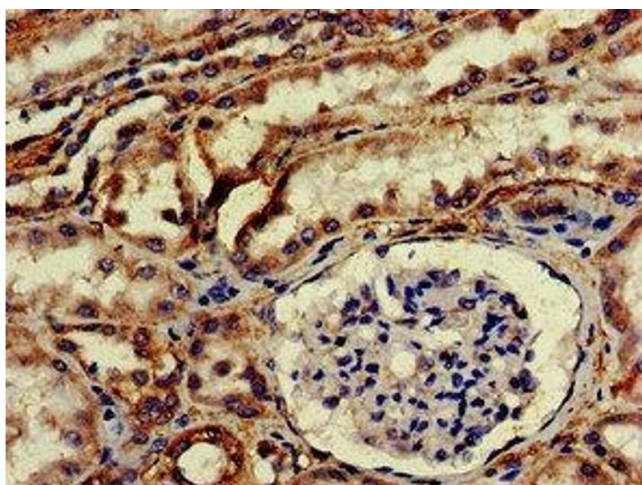
Storage: -20 °C,-80 °C

Storage Comment: Upon receipt, store at -20°C or -80°C. Avoid repeated freeze.



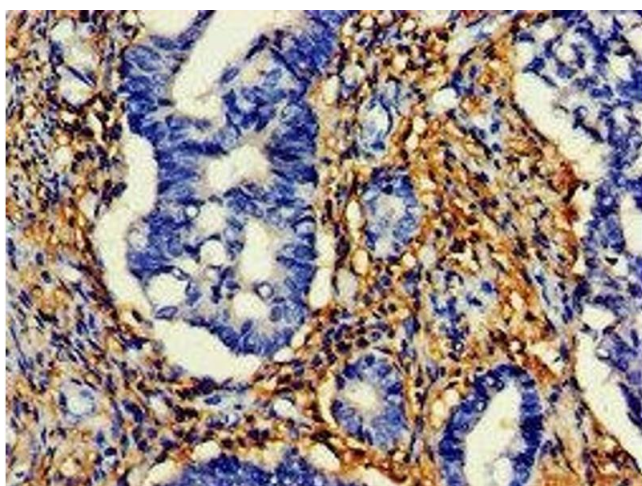
Immunohistochemistry

Image 1. Immunohistochemistry of paraffin-embedded human pancreatic cancer using ABIN7168921 at dilution of 1:100



Immunohistochemistry

Image 2. IHC image of ABIN7168921 diluted at 1:200 and staining in paraffin-embedded human kidney tissue performed on a Leica Bond™ system. After dewaxing and hydration, antigen retrieval was mediated by high pressure in a citrate buffer (pH 6.0). Section was blocked with 10% normal goat serum 30min at RT. Then primary antibody (1% BSA) was incubated at 4°C overnight. The primary is detected by a biotinylated secondary antibody and visualized using an HRP conjugated SP system.



Immunohistochemistry

Image 3. IHC image of ABIN7168921 diluted at 1:200 and staining in paraffin-embedded human colon cancer performed on a Leica Bond™ system. After dewaxing and hydration, antigen retrieval was mediated by high pressure in a citrate buffer (pH 6.0). Section was blocked with 10% normal goat serum 30min at RT. Then primary antibody (1% BSA) was incubated at 4°C overnight. The primary is detected by a biotinylated secondary antibody and visualized using an HRP conjugated SP system.

Please check the [product details page](#) for more images. Overall 5 images are available for ABIN7168921.