

Datasheet for ABIN7168957  
**anti-STRAP antibody (AA 1-350)**

## 3 Images

[Go to Product page](#)

## Overview

Quantity:	100 µL
Target:	STRAP
Binding Specificity:	AA 1-350
Reactivity:	Human
Host:	Rabbit
Clonality:	Polyclonal
Conjugate:	This STRAP antibody is un-conjugated
Application:	Western Blotting (WB), Immunohistochemistry (IHC), ELISA

## Product Details

Immunogen:	Recombinant Human Serine-threonine kinase receptor-associated protein (1-350AA)
Isotype:	IgG
Cross-Reactivity:	Human, Mouse
Purification:	Antigen Affinity Purified

## Target Details

Target:	STRAP
Alternative Name:	STRAP ( <a href="#">STRAP Products</a> )
Background:	Background: The SMN complex plays a catalyst role in the assembly of small nuclear ribonucleoproteins (snRNPs), the building blocks of the spliceosome. Thereby, plays an

## Target Details

important role in the splicing of cellular pre-mRNAs. Most spliceosomal snRNPs contain a common set of Sm proteins SNRPB, SNRPD1, SNRPD2, SNRPD3, SNRPE, SNRPF and SNRPG that assemble in a heptameric protein ring on the Sm site of the small nuclear RNA to form the core snRNP. In the cytosol, the Sm proteins SNRPD1, SNRPD2, SNRPE, SNRPF and SNRPG are trapped in an inactive 6S pICln-Sm complex by the chaperone CLNS1A that controls the assembly of the core snRNP. Dissociation by the SMN complex of CLNS1A from the trapped Sm proteins and their transfer to an SMN-Sm complex triggers the assembly of core snRNPs and their transport to the nucleus. STRAP plays a role in the cellular distribution of the SMN complex. Negatively regulates TGF-beta signaling but positively regulates the PDPK1 kinase activity by enhancing its autophosphorylation and by significantly reducing the association of PDPK1 with 14-3-3 protein.

Aliases: MAP activator with WD repeats antibody, MAWD antibody, PTWD antibody, Serine-threonine kinase receptor-associated protein antibody, serine/threonine kinase receptor associated protein antibody, strap antibody, STRAP\_HUMAN antibody, UNR-interacting protein antibody, UNRIP antibody, WD 40 repeat protein PT WD antibody, WD-40 repeat protein PT-WD antibody

UniProt: [Q9Y3F4](#)

## Application Details

Application Notes: Recommended dilution: WB:1:500-1:2000, IHC:1:20-1:200,

Restrictions: For Research Use only

## Handling

Format: Liquid

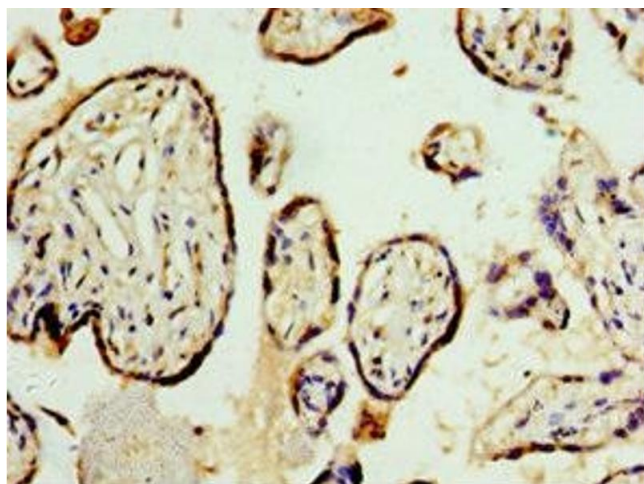
Buffer: PBS with 0.02 % sodium azide, 50 % glycerol, pH 7.3.

Preservative: Sodium azide

Precaution of Use: This product contains Sodium azide: a POISONOUS AND HAZARDOUS SUBSTANCE which should be handled by trained staff only.

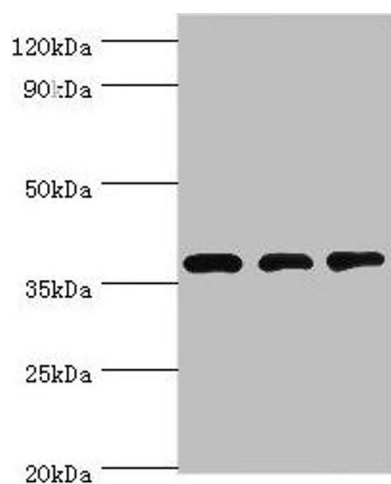
Storage: -20 °C, -80 °C

Storage Comment: Upon receipt, store at -20°C or -80°C. Avoid repeated freeze.



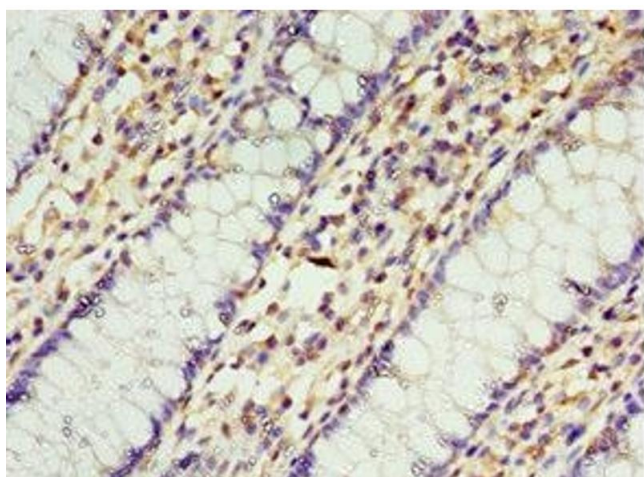
#### Immunohistochemistry

**Image 1.** Immunohistochemistry of paraffin-embedded human placenta tissue using ABIN7168957 at dilution of 1:100



#### Western Blotting

**Image 2.** Western blot All lanes: STRAP antibody at 8 µg/mL  
Lane 1: HepG2 whole cell lysate Lane 2: Hela whole cell lysate Lane 3: Mouse brain tissue Secondary Goat polyclonal to rabbit IgG at 1/10000 dilution Predicted band size: 39, 40 kDa Observed band size: 39 kDa



#### Immunohistochemistry

**Image 3.** Immunohistochemistry of paraffin-embedded human colon cancer using ABIN7168957 at dilution of 1:100