



[Go to Product page](#)

Datasheet for ABIN7168966  
**anti-SRSF1 antibody (AA 1-248)**

1 Image

### Overview

Quantity:	100 µL
Target:	SRSF1
Binding Specificity:	AA 1-248
Reactivity:	Human
Host:	Rabbit
Clonality:	Polyclonal
Application:	Immunohistochemistry (IHC), ELISA

### Product Details

Immunogen:	Recombinant Human Serine/arginine-rich splicing factor 1 protein (1-248AA)
Isotype:	IgG
Cross-Reactivity:	Human
Purification:	Antigen Affinity Purified

### Target Details

Target:	SRSF1
Alternative Name:	SRSF1 ( <a href="#">SRSF1 Products</a> )
Background:	Background: Plays a role in preventing exon skipping, ensuring the accuracy of splicing and regulating alternative splicing. Interacts with other spliceosomal components, via the RS domains, to form a bridge between the 5' and 3'-splice site binding components, U1 snRNP and U2AF. Can stimulate binding of U1 snRNP to a 5'-splice site-containing pre-

## Target Details

---

mRNA. Binds to purine-rich RNA sequences, either the octamer, 5'-'RGAAGAAC-3' (r=A or G) or the decamers, AGGACAGAGC/AGGACGAAGC. Binds preferentially to the 5'-'CGAGGCG-3' motif in vitro. Three copies of the octamer constitute a powerful splicing enhancer in vitro, the ASF/SF2 splicing enhancer (ASE) which can specifically activate ASE-dependent splicing. Isoform ASF-2 and isoform ASF-3 act as splicing repressors. May function as export adapter involved in mRNA nuclear export through the TAP/NXF1 pathway.

Aliases: Alternative splicing factor 1 antibody, Alternative-splicing factor 1 antibody, arginine/serine-rich 1 antibody, ASF 1 antibody, ASF antibody, ASF-1 antibody, ASF1 antibody, FLJ53078 antibody, MGC5228 antibody, P33 subunit antibody, Pre mRNA splicing factor SF2 P33 subunit antibody, pre-mRNA-splicing factor SF2 antibody, Serine/arginine-rich splicing factor 1 antibody, SF2 antibody, SF2P33 antibody, SFRS1 antibody, Splicing factor 2 alternate splicing factor antibody, Splicing factor 2 antibody, Splicing factor antibody, Splicing factor arginine/serine rich 1 antibody, SR Splicing factor 1 antibody, SRp30a antibody, srsf1 antibody, SRSF1\_HUMAN antibody

---

UniProt: [Q07955](#)

---

Pathways: [Ribonucleoprotein Complex Subunit Organization](#)

## Application Details

---

Application Notes: Recommended dilution: IHC:1:20-1:200,

---

Restrictions: For Research Use only

## Handling

---

Format: Liquid

---

Buffer: PBS with 0.02 % sodium azide, 50 % glycerol, pH 7.3.

---

Preservative: Sodium azide

---

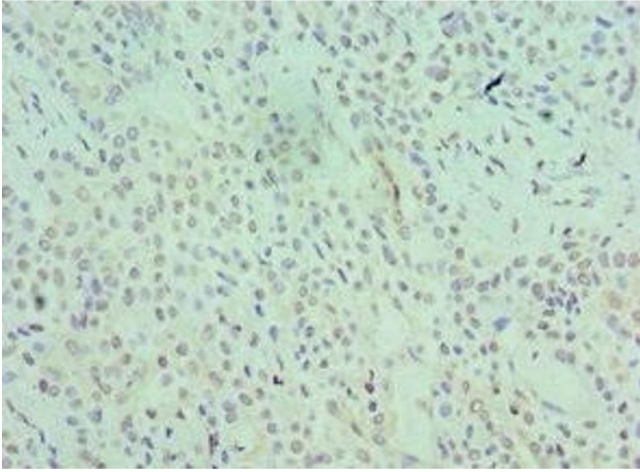
Precaution of Use: This product contains Sodium azide: a POISONOUS AND HAZARDOUS SUBSTANCE which should be handled by trained staff only.

---

Storage: -20 °C,-80 °C

---

Storage Comment: Upon receipt, store at -20°C or -80°C. Avoid repeated freeze.



### Immunohistochemistry

**Image 1.** Immunohistochemistry of paraffin-embedded human breast cancer using ABIN7168966 at dilution of 1:100