

Datasheet for ABIN7168977
anti-STK16 antibody (AA 1-305)[Go to Product page](#)

3 Images

Overview

Quantity:	100 µL
Target:	STK16
Binding Specificity:	AA 1-305
Reactivity:	Human
Host:	Rabbit
Clonality:	Polyclonal
Conjugate:	This STK16 antibody is un-conjugated
Application:	Western Blotting (WB), ELISA, Immunohistochemistry (IHC)

Product Details

Immunogen:	Recombinant Human Serine/threonine-protein kinase 16 protein (1-305AA)
Isotype:	IgG
Cross-Reactivity:	Human, Mouse
Purification:	Antigen Affinity Purified

Target Details

Target:	STK16
Alternative Name:	STK16 (STK16 Products)
Background:	Background: Membrane-associated protein kinase that phosphorylates on serine and threonine residues. In vitro substrates include DRG1, ENO1 and EIF4EBP1. Also autophosphorylates. May

Target Details

be involved in secretory vesicle trafficking or intracellular signaling. May have a role in regulating stromal-epithelial interactions that occur during ductal morphogenesis in the mammary gland. May be involved in TGF-beta signaling. Able to autophosphorylate on Tyr residue, it is however unclear whether it has tyrosine-protein kinase toward other proteins. Aliases: EDPK antibody, F52 antibody, FLJ39635 antibody, hPSK antibody, KRCT antibody, MGC16211 antibody, MPSK antibody, MPSK1 antibody, Myristoylated and palmitoylated serine/threonine protein kinase antibody, Myristoylated and palmitoylated serine/threonine-protein kinase antibody, PKL12 antibody, Protein kinase expressed in day 12 fetal liver antibody, Protein kinase Krcr antibody, Protein kinase PKL12 antibody, Serine/threonine kinase 16 antibody, Serine/threonine protein kinase 16 antibody, Serine/threonine-protein kinase 16 antibody, Stk16 antibody, STK16_HUMAN antibody, TGF beta stimulated factor 1 antibody, TGF-beta-stimulated factor 1 antibody, TGFB stimulated factor 1 antibody, Transforming growth factor beta stimulated factor 1 antibody, TSF-1 antibody, TSF1 antibody, Tyrosine protein kinase STK16 antibody

UniProt: [075716](#)

Application Details

Application Notes: Recommended dilution: WB:1:200-1:1000, IHC:1:20-1:200,

Restrictions: For Research Use only

Handling

Format: Liquid

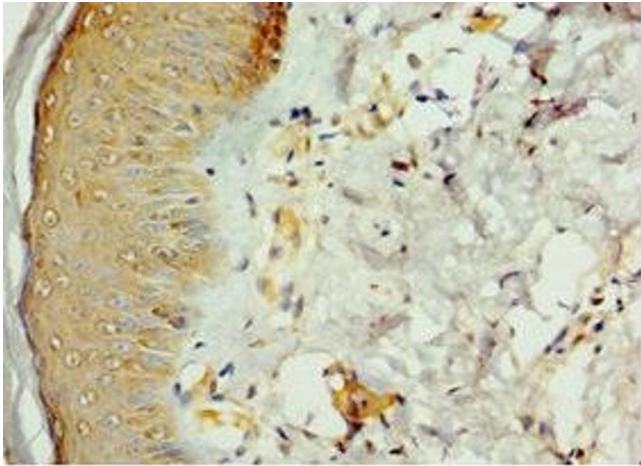
Buffer: PBS with 0.02 % sodium azide, 50 % glycerol, pH 7.3.

Preservative: Sodium azide

Precaution of Use: This product contains Sodium azide: a POISONOUS AND HAZARDOUS SUBSTANCE which should be handled by trained staff only.

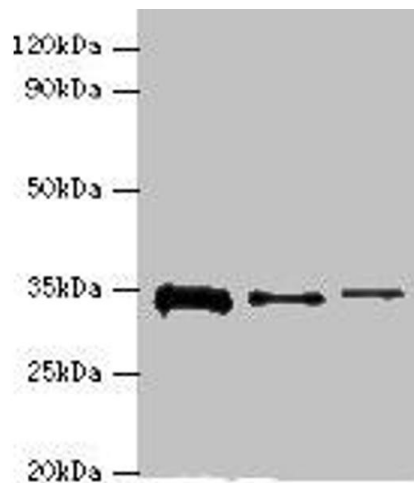
Storage: -20 °C,-80 °C

Storage Comment: Upon receipt, store at -20°C or -80°C. Avoid repeated freeze.



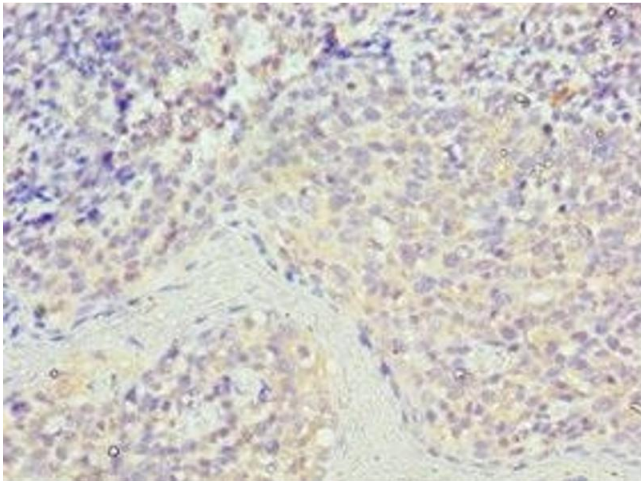
Immunohistochemistry

Image 1. Immunohistochemistry of paraffin-embedded human skin tissue using ABIN7168977 at dilution of 1:100



Western Blotting

Image 2. Western blot All lanes: STK16 antibody at 12 μ g/mL Lane 1: A549 whole cell lysate Lane 2: Mouse brain tissue Lane 3: A431 whole cell lysate Secondary Goat polyclonal to rabbit IgG at 1/10000 dilution Predicted band size: 35 kDa Observed band size: 35 kDa



Immunohistochemistry

Image 3. Immunohistochemistry of paraffin-embedded human tonsil tissue using ABIN7168977 at dilution of 1:100