



[Go to Product page](#)

Datasheet for ABIN7169011

## anti-ATR antibody (AA 2405-2644)

### 2 Images

#### Overview

Quantity:	100 µg
Target:	ATR
Binding Specificity:	AA 2405-2644
Reactivity:	Human
Host:	Rabbit
Clonality:	Polyclonal
Conjugate:	This ATR antibody is un-conjugated
Application:	ELISA, Western Blotting (WB), Immunohistochemistry (IHC)

#### Product Details

Immunogen:	Recombinant Human Serine/threonine-protein kinase ATR protein (2405-2644AA)
Isotype:	IgG
Cross-Reactivity:	Human
Purification:	>95%, Protein G purified

#### Target Details

Target:	ATR
Alternative Name:	ATR ( <a href="#">ATR Products</a> )
Background:	Background: Serine/threonine protein kinase which activates checkpoint signaling upon genotoxic stresses such as ionizing radiation (IR), ultraviolet light (UV), or DNA replication

## Target Details

---

stalling, thereby acting as a DNA damage sensor. Recognizes the substrate consensus sequence [ST]-Q. Phosphorylates BRCA1, CHEK1, MCM2, RAD17, RPA2, SMC1 and p53/TP53, which collectively inhibit DNA replication and mitosis and promote DNA repair, recombination and apoptosis. Phosphorylates '\\Ser-139\\' of histone variant H2AX/H2AFX at sites of DNA damage, thereby regulating DNA damage response mechanism. Required for FANCD2 ubiquitination. Critical for maintenance of fragile site stability and efficient regulation of centrosome duplication.

Aliases: Ataxia telangiectasia and Rad3 related antibody, Ataxia telangiectasia and Rad3-related protein antibody, ATR antibody, ATR\_HUMAN antibody, FCTCS antibody, FRAP Related Protein 1 antibody, FRAP-related protein 1 antibody, FRP1 antibody, MEC1 antibody, MEC1 mitosis entry checkpoint 1 homolog antibody, Protein kinase ATR antibody, RAC3 antibody, Rad3 related protein antibody, SCKL antibody, SCKL1 antibody, Serine/threonine protein kinase ATR antibody, Serine/threonine-protein kinase ATR antibody

---

UniProt: [Q13535](#)

---

Pathways: [Positive Regulation of Response to DNA Damage Stimulus](#)

## Application Details

---

Application Notes: Recommended dilution: WB:1:500-1:5000, IHC:1:20-1:200,

---

Restrictions: For Research Use only

## Handling

---

Format: Liquid

---

Buffer: Preservative: 0.03 % Proclin 300  
Constituents: 50 % Glycerol, 0.01M PBS, PH 7.4

---

Preservative: ProClin

---

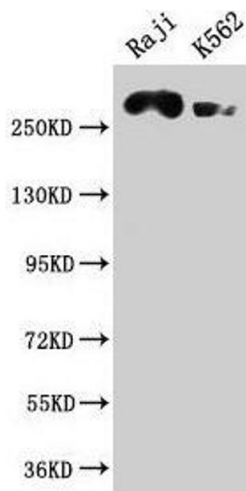
Precaution of Use: This product contains ProClin: a POISONOUS AND HAZARDOUS SUBSTANCE which should be handled by trained staff only.

---

Storage: -20 °C,-80 °C

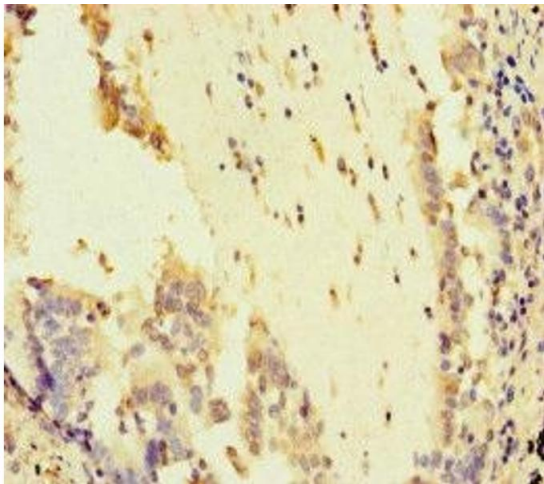
---

Storage Comment: Upon receipt, store at -20°C or -80°C. Avoid repeated freeze.



### Western Blotting

**Image 1.** Western Blot Positive WB detected in: Raji whole cell lysate, K562 whole cell lysate All lanes: ATR antibody at 1:2000 Secondary Goat polyclonal to rabbit IgG at 1/50000 dilution Predicted band size: 302, 295, 298 kDa Observed band size: 302 kDa



### Immunohistochemistry

**Image 2.** Immunohistochemistry of paraffin-embedded human lung cancer using ABIN7169011 at dilution of 1:100