

Datasheet for ABIN7169039
anti-DCLK1 antibody (AA 143-381)[Go to Product page](#)

3 Images

Overview

Quantity:	100 µg
Target:	DCLK1
Binding Specificity:	AA 143-381
Reactivity:	Human
Host:	Rabbit
Clonality:	Polyclonal
Conjugate:	This DCLK1 antibody is un-conjugated
Application:	ELISA, Immunohistochemistry (IHC), Immunofluorescence (IF)

Product Details

Immunogen:	Recombinant Human Serine/threonine-protein kinase DCLK1 protein (143-381AA)
Isotype:	IgG
Cross-Reactivity:	Human
Purification:	>95%, Protein G purified

Target Details

Target:	DCLK1
Alternative Name:	DCLK1 (DCLK1 Products)
Background:	Background: Probable kinase that may be involved in a calcium-signaling pathway controlling neuronal migration in the developing brain. May also participate in functions of the mature

Target Details

nervous system.

Aliases: Calcium/calmodulin-dependent protein kinase type I-like CPG16 antibody, CL1 antibody, CLICK1 antibody, Cpg16 antibody, DCDC3A antibody, Dcl antibody, Dclk antibody, Dclk1 antibody, DCLK1_HUMAN antibody, Doublecortin domain-containing protein 3A antibody, Doublecortin-like and CAM kinase-like 1 antibody, Doublecortin-like kinase 1 antibody, KIAA0369 antibody, Serine/threonine-protein kinase DCAMKL1 antibody, Serine/threonine-protein kinase DCLK1 antibody

UniProt: [O15075](#)

Application Details

Application Notes: Recommended dilution: IHC:1:20-1:200, IF:1:50-1:200,

Restrictions: For Research Use only

Handling

Format: Liquid

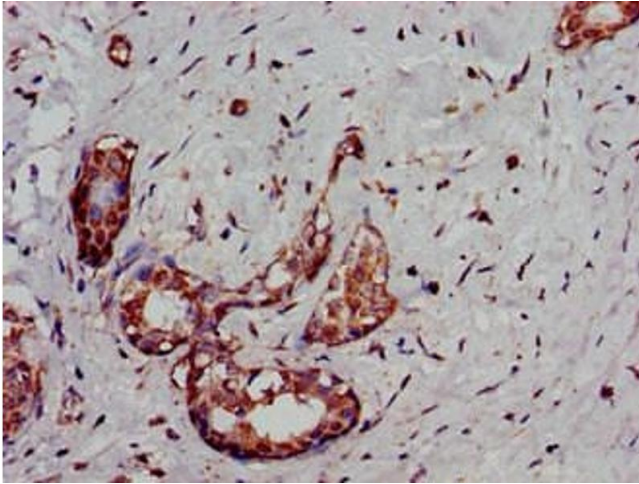
Buffer: Preservative: 0.03 % Proclin 300
Constituents: 50 % Glycerol, 0.01M PBS, pH 7.4

Preservative: ProClin

Precaution of Use: This product contains ProClin: a POISONOUS AND HAZARDOUS SUBSTANCE which should be handled by trained staff only.

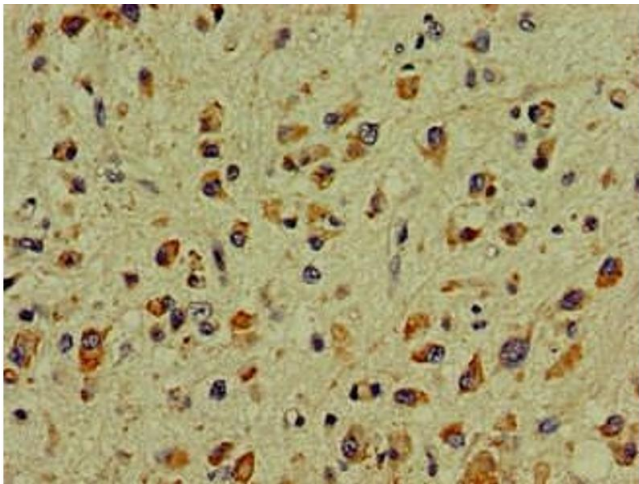
Storage: -20 °C, -80 °C

Storage Comment: Upon receipt, store at -20°C or -80°C. Avoid repeated freeze.



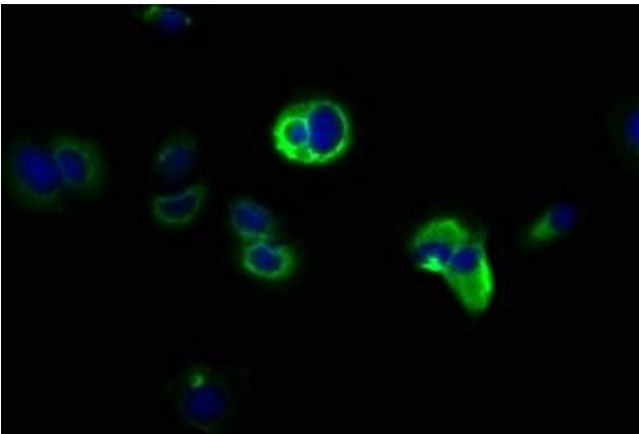
Immunohistochemistry

Image 1. Immunohistochemistry of paraffin-embedded human breast cancer using ABIN7169039 at dilution of 1:100



Immunohistochemistry

Image 2. Immunohistochemistry of paraffin-embedded human glioma using ABIN7169039 at dilution of 1:100



Immunofluorescence

Image 3. Immunofluorescence staining of MCF-7 cells with ABIN7169039 at 1:166, counter-stained with DAPI. The cells were fixed in 4% formaldehyde, permeabilized using 0.2% Triton X-100 and blocked in 10% normal Goat Serum. The cells were then incubated with the antibody overnight at 4°C. The secondary antibody was Alexa Fluor 488-conjugated AffiniPure Goat Anti-Rabbit IgG(H+L).