

Datasheet for ABIN7169043
anti-MASTL antibody (AA 612-740)[Go to Product page](#)

3 Images

Overview

Quantity:	100 µg
Target:	MASTL
Binding Specificity:	AA 612-740
Reactivity:	Human
Host:	Rabbit
Clonality:	Polyclonal
Conjugate:	This MASTL antibody is un-conjugated
Application:	Western Blotting (WB), ELISA, Immunohistochemistry (IHC)

Product Details

Immunogen:	Recombinant Human Serine/threonine-protein kinase greatwall protein (612-740AA)
Isotype:	IgG
Cross-Reactivity:	Human
Purification:	>95%, Protein G purified

Target Details

Target:	MASTL
Alternative Name:	MASTL (MASTL Products)
Background:	Background: Serine/threonine kinase that plays a key role in M phase by acting as a regulator of mitosis entry and maintenance. Acts by promoting the inactivation of protein phosphatase 2A

Target Details

(PP2A) during M phase: does not directly inhibit PP2A but acts by mediating phosphorylation and subsequent activation of ARPP19 and ENSA at '\\Ser-62\\' and '\\Ser-67\\', respectively. ARPP19 and ENSA are phosphatase inhibitors that specifically inhibit the PPP2R2D (PR55-delta) subunit of PP2A. Inactivation of PP2A during M phase is essential to keep cyclin-B1-CDK1 activity high. Following DNA damage, it is also involved in checkpoint recovery by being inhibited. Phosphorylates histone protein in vitro, however such activity is unsure in vivo. May be involved in megakaryocyte differentiation.

Aliases: 2700091H24Rik antibody, C88295 antibody, FLJ14813 antibody, GREATWALL antibody, Greatwall protein kinase antibody, GW antibody, GWL antibody, GWL_HUMAN antibody, hGWL antibody, MAST-L antibody, Mastl antibody, MGC117975 antibody, Microtubule associated serine/threonine kinase like antibody, Microtubule-associated serine/threonine-protein kinase-like antibody, RP11 85G18.2 antibody, Serine/threonine-protein kinase greatwall antibody, THC2 antibody

UniProt: [Q96GX5](#)

Application Details

Application Notes: Recommended dilution: WB:1:500-1:5000, IHC:1:200-1:500,

Restrictions: For Research Use only

Handling

Format: Liquid

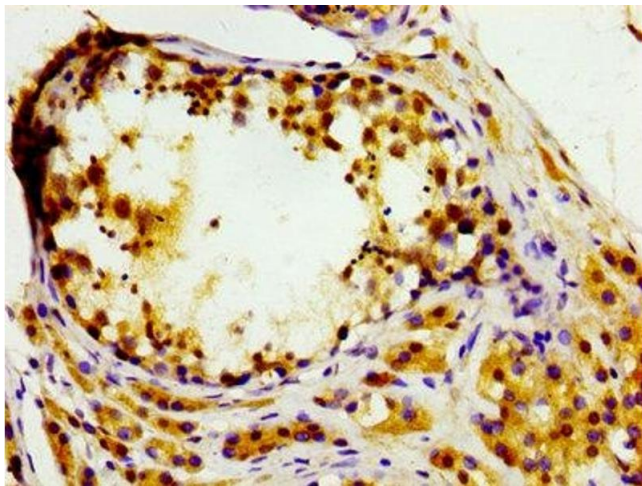
Buffer: Preservative: 0.03 % Proclin 300
Constituents: 50 % Glycerol, 0.01M PBS, pH 7.4

Preservative: ProClin

Precaution of Use: This product contains ProClin: a POISONOUS AND HAZARDOUS SUBSTANCE which should be handled by trained staff only.

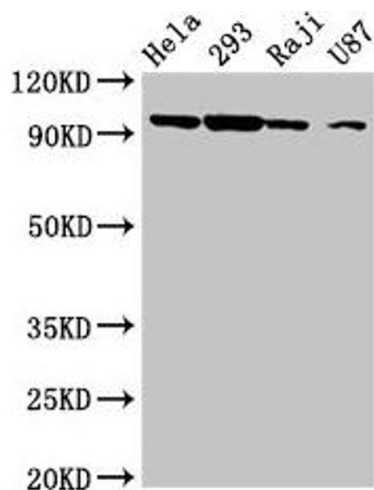
Storage: -20 °C,-80 °C

Storage Comment: Upon receipt, store at -20°C or -80°C. Avoid repeated freeze.



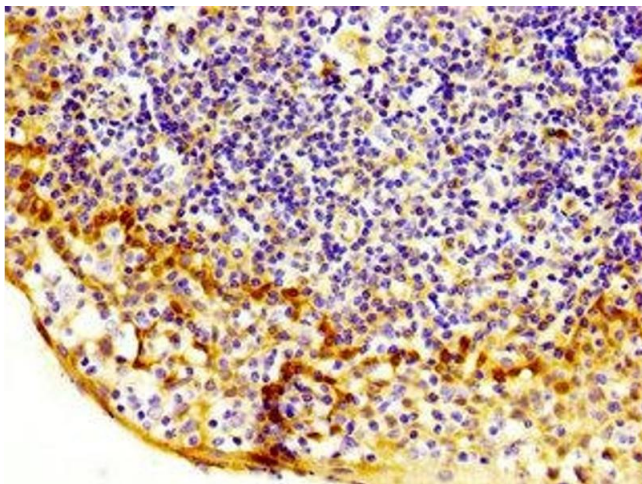
Immunohistochemistry

Image 1. IHC image of ABIN7169043 diluted at 1:200 and staining in paraffin-embedded human testis tissue performed on a Leica Bond™ system. After dewaxing and hydration, antigen retrieval was mediated by high pressure in a citrate buffer (pH 6.0). Section was blocked with 10% normal goat serum 30min at RT. Then primary antibody (1% BSA) was incubated at 4°C overnight. The primary is detected by a biotinylated secondary antibody and visualized using an HRP conjugated SP system.



Western Blotting

Image 2. Western Blot Positive WB detected in: HeLa whole cell lysate, 293 whole cell lysate, Raji whole cell lysate, U87 whole cell lysate All lanes: MASTL antibody at 6.3 µg/mL Secondary Goat polyclonal to rabbit IgG at 1/50000 dilution Predicted band size: 98, 93 kDa Observed band size: 98 kDa



Immunohistochemistry

Image 3. IHC image of ABIN7169043 diluted at 1:200 and staining in paraffin-embedded human tonsil tissue performed on a Leica Bond™ system. After dewaxing and hydration, antigen retrieval was mediated by high pressure in a citrate buffer (pH 6.0). Section was blocked with 10% normal goat serum 30min at RT. Then primary antibody (1% BSA) was incubated at 4°C overnight. The primary is detected by a biotinylated secondary antibody and visualized using an HRP conjugated SP system.