

Datasheet for ABIN7169059  
**anti-LATS1 antibody (AA 1-280)**



[Go to Product page](#)

5 Images

## Overview

Quantity:	100 µg
Target:	LATS1
Binding Specificity:	AA 1-280
Reactivity:	Human
Host:	Rabbit
Clonality:	Polyclonal
Conjugate:	This LATS1 antibody is un-conjugated
Application:	ELISA, Immunohistochemistry (IHC), Immunoprecipitation (IP), Immunofluorescence (IF)

## Product Details

Immunogen:	Recombinant Human Serine/threonine-protein kinase LATS1 protein (1-280AA)
Isotype:	IgG
Cross-Reactivity:	Human
Purification:	>95%, Protein G purified

## Target Details

Target:	LATS1
Alternative Name:	LATS1 ( <a href="#">LATS1 Products</a> )
Background:	Background: Negative regulator of YAP1 in the Hippo signaling pathway that plays a pivotal role in organ size control and tumor suppression by restricting proliferation and promoting

## Target Details

apoptosis. The core of this pathway is composed of a kinase cascade wherein STK3/MST2 and STK4/MST1, in complex with its regulatory protein SAV1, phosphorylates and activates LATS1/2 in complex with its regulatory protein MOB1, which in turn phosphorylates and inactivates YAP1 oncoprotein and WWTR1/TAZ. Phosphorylation of YAP1 by LATS1 inhibits its translocation into the nucleus to regulate cellular genes important for cell proliferation, cell death, and cell migration. Acts as a tumor suppressor which plays a critical role in maintenance of ploidy through its actions in both mitotic progression and the G1 tetraploidy checkpoint. Negatively regulates G2/M transition by down-regulating CDK1 kinase activity. Involved in the control of p53 expression. Affects cytokinesis by regulating actin polymerization through negative modulation of LIMK1. May also play a role in endocrine function.

Aliases: h-warts antibody, Large tumor suppressor homolog 1 antibody, LATS large tumor suppressor homolog 1 antibody, LATS1 antibody, LATS1\_HUMAN antibody, Serine threonine protein kinase LATS1 antibody, Serine/threonine-protein kinase LATS1 antibody, WARTS antibody, WARTS protein kinase antibody, wts antibody

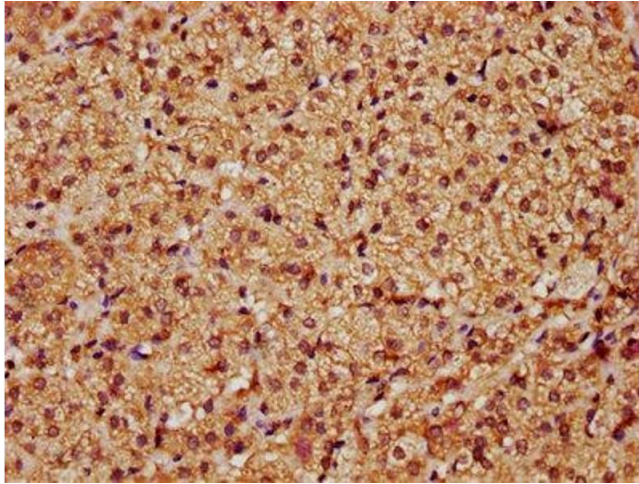
UniProt:	<a href="#">O95835</a>
Pathways:	<a href="#">Regulation of Actin Filament Polymerization</a> , <a href="#">Maintenance of Protein Location</a>

## Application Details

Application Notes:	Recommended dilution: IHC:1:100-1:1200, IF:1:50-1:500, IP:1:200-1:2000,
Restrictions:	For Research Use only

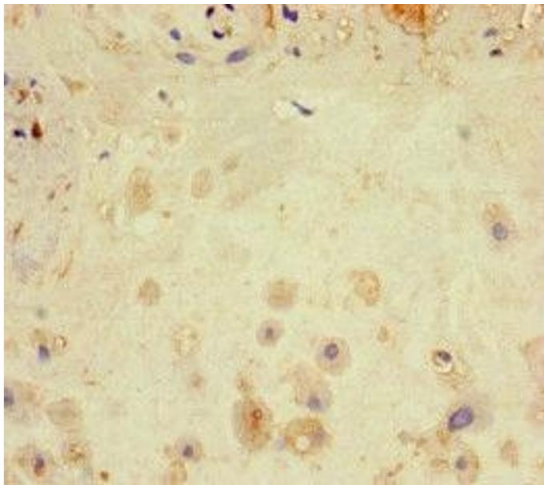
## Handling

Format:	Liquid
Buffer:	Preservative: 0.03 % Proclin 300 Constituents: 50 % Glycerol, 0.01M PBS, PH 7.4
Preservative:	ProClin
Precaution of Use:	This product contains ProClin: a POISONOUS AND HAZARDOUS SUBSTANCE which should be handled by trained staff only.
Storage:	-20 °C,-80 °C
Storage Comment:	Upon receipt, store at -20°C or -80°C. Avoid repeated freeze.



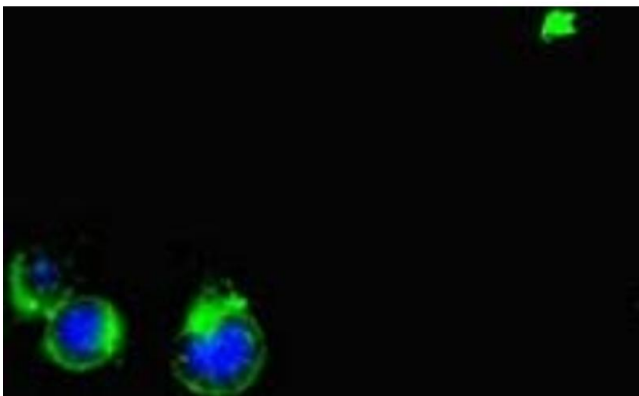
#### Immunohistochemistry

**Image 1.** IHC image of ABIN7169059 diluted at 1:1200 and staining in paraffin-embedded human adrenal gland tissue performed on a Leica Bond™ system. After dewaxing and hydration, antigen retrieval was mediated by high pressure in a citrate buffer (pH 6.0). Section was blocked with 10% normal goat serum 30min at RT. Then primary antibody (1% BSA) was incubated at 4°C overnight. The primary is detected by a biotinylated secondary antibody and visualized using an HRP conjugated SP system.



#### Immunohistochemistry

**Image 2.** Immunohistochemistry of paraffin-embedded human placenta tissue using ABIN7169059 at dilution of 1:100



#### Immunofluorescence

**Image 3.** Immunofluorescent analysis of HeLa cells using ABIN7169059 at dilution of 1:100 and Alexa Fluor 488-conjugated AffiniPure Goat Anti-Rabbit IgG(H+L)

Please check the [product details page](#) for more images. Overall 5 images are available for ABIN7169059.