

Datasheet for ABIN716906  
**anti-UEVLD antibody (AA 85-180)**



[Go to Product page](#)

1 Image

## Overview

Quantity:	100 µL
Target:	UEVLD
Binding Specificity:	AA 85-180
Reactivity:	Rat
Host:	Rabbit
Clonality:	Polyclonal
Conjugate:	This UEVLD antibody is un-conjugated
Application:	Western Blotting (WB), ELISA, Immunofluorescence (Cultured Cells) (IF (cc)), Immunofluorescence (Paraffin-embedded Sections) (IF (p)), Immunohistochemistry (Paraffin-embedded Sections) (IHC (p)), Immunohistochemistry (Frozen Sections) (IHC (fro))

## Product Details

Immunogen:	KLH conjugated synthetic peptide derived from human UEVLD
Isotype:	IgG
Cross-Reactivity:	Rat
Predicted Reactivity:	Human, Mouse, Dog, Cow, Pig, Horse, Rabbit
Purification:	Purified by Protein A.

## Target Details

Target:	UEVLD
---------	-------

## Target Details

---

Alternative Name:	Uevld ( <a href="#">UEVLD Products</a> )
Background:	Synonyms: ATTP, UEV3, Ubiquitin-conjugating enzyme E2 variant 3, UEV-3, EV and lactate/malate dehydrogenase domain-containing protein, UEVLD Background: Possible negative regulator of polyubiquitination.
Gene ID:	55293
UniProt:	<a href="#">Q8IX04</a>

## Application Details

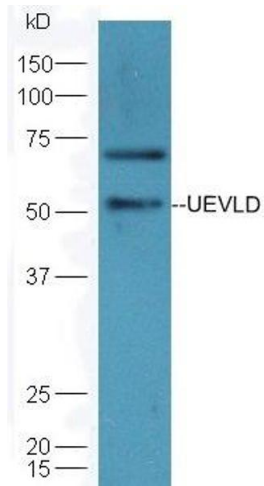
---

Application Notes:	WB 1:300-5000 ELISA 1:500-1000 IHC-P 1:200-400 IHC-F 1:100-500 IF(IHC-P) 1:50-200 IF(IHC-F) 1:50-200 IF(ICC) 1:50-200
Restrictions:	For Research Use only

## Handling

---

Format:	Liquid
Concentration:	1 µg/µL
Buffer:	0.01M TBS( pH 7.4) with 1 % BSA, 0.02 % Proclin300 and 50 % Glycerol.
Preservative:	ProClin
Precaution of Use:	This product contains ProClin: a POISONOUS AND HAZARDOUS SUBSTANCE, which should be handled by trained staff only.
Storage:	4 °C,-20 °C
Storage Comment:	Shipped at 4°C. Store at -20°C for one year. Avoid repeated freeze/thaw cycles.
Expiry Date:	12 months



### Western Blotting

**Image 1.** Mouse lung lysates probed with Rabbit Anti-UEVLD Polyclonal Antibody(ABIN716906) at 1:300 overnight in 4 °C. Followed by conjugation to the secondary antibody at 1:5000 90min in 37 °C