

Datasheet for ABIN7169067
anti-MARK1 antibody (AA 560-700)[Go to Product page](#)

3 Images

Overview

Quantity:	100 µL
Target:	MARK1
Binding Specificity:	AA 560-700
Reactivity:	Human
Host:	Rabbit
Clonality:	Polyclonal
Conjugate:	This MARK1 antibody is un-conjugated
Application:	Western Blotting (WB), ELISA, Immunohistochemistry (IHC)

Product Details

Immunogen:	Recombinant Human Serine/threonine-protein kinase MARK1 protein (560-700AA)
Isotype:	IgG
Cross-Reactivity:	Human, Rat
Purification:	Antigen Affinity Purified

Target Details

Target:	MARK1
Alternative Name:	MARK1 (MARK1 Products)
Background:	Background: Serine/threonine-protein kinase involved in cell polarity and microtubule dynamics regulation. Phosphorylates DCX, MAP2, MAP4 and MAPT/TAU. Involved in cell polarity by

Target Details

phosphorylating the microtubule-associated proteins MAP2, MAP4 and MAPT/TAU at KXGS motifs, causing detachment from microtubules, and their disassembly. Involved in the regulation of neuronal migration through its dual activities in regulating cellular polarity and microtubule dynamics, possibly by phosphorylating and regulating DCX. Also acts as a positive regulator of the Wnt signaling pathway, probably by mediating phosphorylation of dishevelled proteins (DVL1, DVL2 and/or DVL3).

Aliases: KIAA1477 antibody, MAP/microtubule affinity regulating kinase 1 antibody, MAP/microtubule affinity-regulating kinase 1 antibody, MARK 1 antibody, MARK antibody, Mark1 antibody, MARK1_HUMAN antibody, MGC126512 antibody, MGC126513 antibody, Serine/threonine protein kinase MARK1 antibody, Serine/threonine-protein kinase MARK1 antibody

UniProt: [Q9P0L2](#)

Pathways: [SARS-CoV-2 Protein Interactome](#), [The Global Phosphorylation Landscape of SARS-CoV-2 Infection](#)

Application Details

Application Notes: Recommended dilution: WB:1:1000-1:5000, IHC:1:20-1:200,

Restrictions: For Research Use only

Handling

Format: Liquid

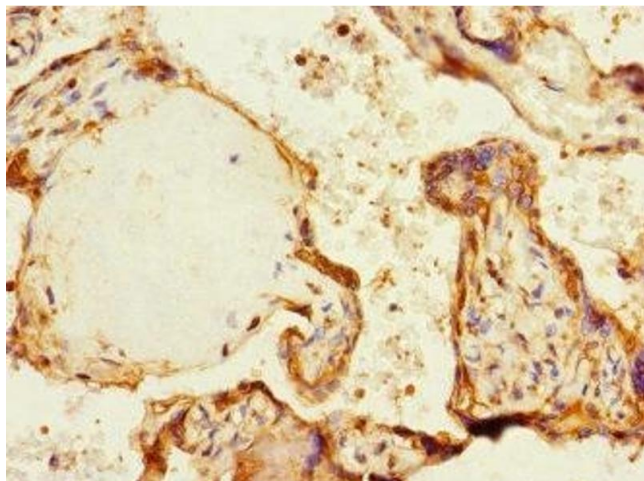
Buffer: PBS with 0.02 % sodium azide, 50 % glycerol, pH 7.3.

Preservative: Sodium azide

Precaution of Use: This product contains Sodium azide: a POISONOUS AND HAZARDOUS SUBSTANCE which should be handled by trained staff only.

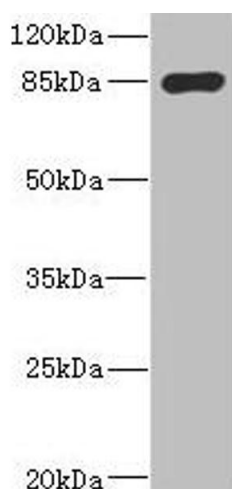
Storage: -20 °C, -80 °C

Storage Comment: Upon receipt, store at -20°C or -80°C. Avoid repeated freeze.



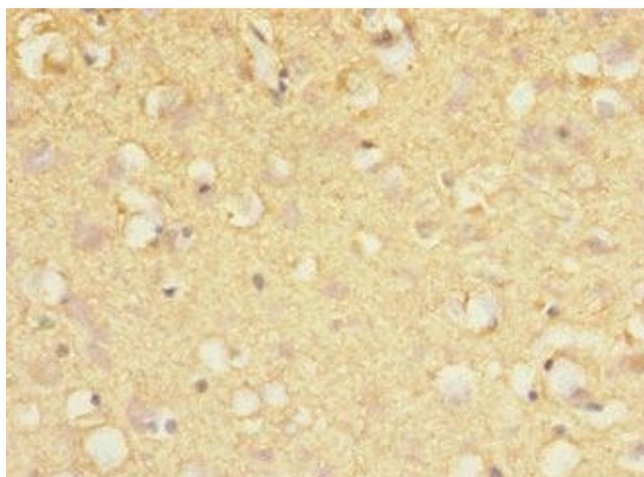
Immunohistochemistry

Image 1. Immunohistochemistry of paraffin-embedded human placenta tissue using ABIN7169067 at dilution of 1:100



Western Blotting

Image 2. Western blot All lanes: MARK1 antibody IgG at 2.65 µg/mL + Rat heart tissue Secondary Goat polyclonal to rabbit IgG at 1/10000 dilution Predicted band size: 90, 73, 85 kDa Observed band size: 90 kDa



Immunohistochemistry

Image 3. Immunohistochemistry of paraffin-embedded human brain tissue using ABIN7169067 at dilution of 1:100