



[Go to Product page](#)

Datasheet for ABIN7169120

anti-NIM1 antibody (AA 1-436)

3 Images

Overview

| | |
|----------------------|--|
| Quantity: | 100 µg |
| Target: | NIM1 |
| Binding Specificity: | AA 1-436 |
| Reactivity: | Human |
| Host: | Rabbit |
| Clonality: | Polyclonal |
| Conjugate: | This NIM1 antibody is un-conjugated |
| Application: | ELISA, Western Blotting (WB), Immunohistochemistry (IHC) |

Product Details

| | |
|-------------------|--|
| Immunogen: | Recombinant Human Serine/threonine-protein kinase NIM1 protein (1-436AA) |
| Isotype: | IgG |
| Cross-Reactivity: | Human |
| Purification: | >95%, Protein G purified |

Target Details

| | |
|-------------------|---|
| Target: | NIM1 |
| Alternative Name: | NIM1K (NIM1 Products) |
| Background: | NIM1K antibody, NIM1 antibody, Serine/threonine-protein kinase NIM1 antibody, EC 2.7.11.1 antibody, NIM1 serine/threonine-protein kinase antibody |

Target Details

UniProt: [Q8IY84](#)

Application Details

Application Notes: Recommended dilution: WB:1:1000-1:5000, IHC:1:20-1:200,

Restrictions: For Research Use only

Handling

Format: Liquid

Buffer: Preservative: 0.03 % Proclin 300
Constituents: 50 % Glycerol, 0.01M PBS, PH 7.4

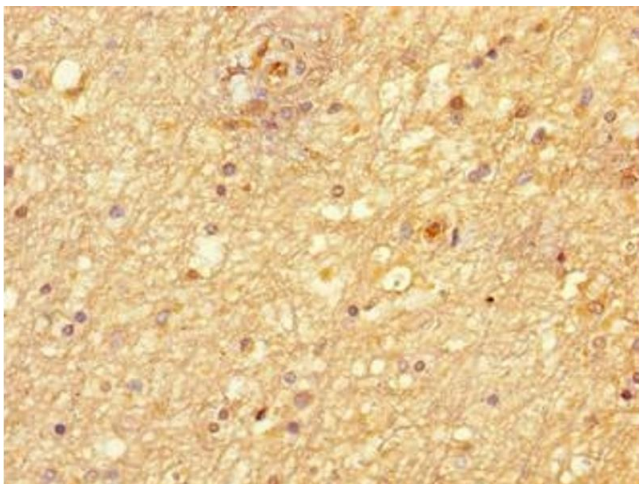
Preservative: ProClin

Precaution of Use: This product contains ProClin: a POISONOUS AND HAZARDOUS SUBSTANCE which should be handled by trained staff only.

Storage: -20 °C,-80 °C

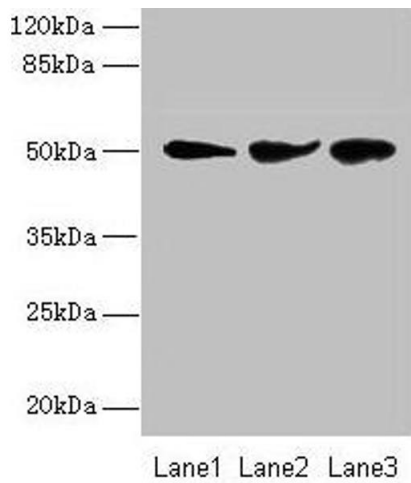
Storage Comment: Upon receipt, store at -20°C or -80°C. Avoid repeated freeze.

Images



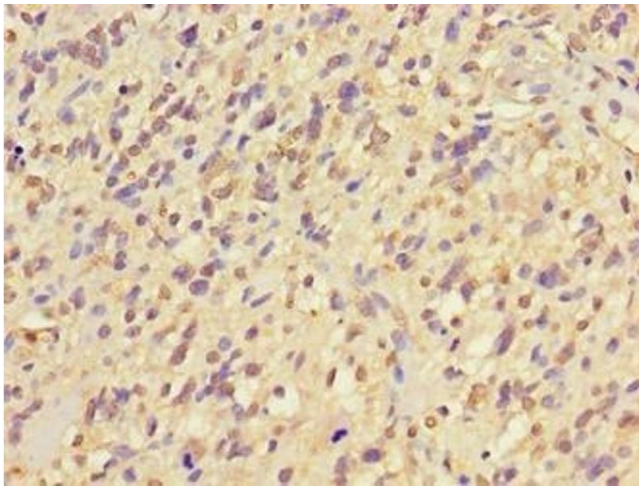
Immunohistochemistry

Image 1. Immunohistochemistry of paraffin-embedded human brain tissue using ABIN7169120 at dilution of 1:100



Western Blotting

Image 2. Western blot All lanes: NIM1K antibody at 2 µg/mL
Lane 1: Jurkat whole cell lysate Lane 2: HepG2 whole cell lysate Lane 3: COLO205 whole cell lysate Secondary Goat polyclonal to rabbit IgG at 1/10000 dilution Predicted band size: 50 kDa Observed band size: 50 kDa



Immunohistochemistry

Image 3. Immunohistochemistry of paraffin-embedded human glioma using ABIN7169120 at dilution of 1:100