

Datasheet for ABIN7169132
anti-PAK4 antibody (AA 1-426)[Go to Product page](#)

4 Images

Overview

Quantity:	100 µg
Target:	PAK4
Binding Specificity:	AA 1-426
Reactivity:	Human
Host:	Rabbit
Clonality:	Polyclonal
Conjugate:	This PAK4 antibody is un-conjugated
Application:	Western Blotting (WB), ELISA, Immunohistochemistry (IHC), Immunofluorescence (IF)

Product Details

Immunogen:	Recombinant Human Serine/threonine-protein kinase PAK 4 protein (1-426AA)
Isotype:	IgG
Cross-Reactivity:	Human, Rat
Purification:	>95%, Protein G purified

Target Details

Target:	PAK4
Alternative Name:	PAK4 (PAK4 Products)
Background:	Background: Serine/threonine protein kinase that plays a role in a variety of different signaling pathways including cytoskeleton regulation, cell migration, growth, proliferation or cell survival.

Target Details

Activation by various effectors including growth factor receptors or active CDC42 and RAC1 results in a conformational change and a subsequent autophosphorylation on several serine and/or threonine residues. Phosphorylates and inactivates the protein phosphatase SSH1, leading to increased inhibitory phosphorylation of the actin binding/depolymerizing factor cofilin. Decreased cofilin activity may lead to stabilization of actin filaments. Phosphorylates LIMK1, a kinase that also inhibits the activity of cofilin. Phosphorylates integrin beta5/ITGB5 and thus regulates cell motility. Phosphorylates ARHGEF2 and activates the downstream target RHOA that plays a role in the regulation of assembly of focal adhesions and actin stress fibers. Stimulates cell survival by phosphorylating the BCL2 antagonist of cell death BAD. Alternatively, inhibits apoptosis by preventing caspase-8 binding to death domain receptors in a kinase independent manner. Plays a role in cell-cycle progression by controlling levels of the cell-cycle regulatory protein CDKN1A and by phosphorylating RAN.

Aliases: KIAA1142 antibody, p21 activated kinase 4 antibody, p21 Cdc42/Rac1-actiated kinase 4 antibody, P21 protein (Cdc42/Rac) activated kinase 4 antibody, p21(CDKN1A) activated kinase 4 antibody, p21-activated kinase 4 antibody, PAK 4 antibody, PAK-4 antibody, Pak4 antibody, PAK4_HUMAN antibody, Protein kinase related to S.cerevisiae STE20 effector for Cdc42Hs antibody, Serine threonine kinase PAK 4 antibody, Serine/threonine protein kinase PAK 4 antibody, Serine/threonine protein kinase PAK4 antibody, Serine/threonine-protein kinase PAK 4 antibody

UniProt: [O96013](#)

Pathways: [RTK Signaling](#)

Application Details

Application Notes: Recommended dilution: WB:1:500-1:5000, IHC:1:500-1:1000, IF:1:200-1:500,

Restrictions: For Research Use only

Handling

Format: Liquid

Buffer: Preservative: 0.03 % Proclin 300
Constituents: 50 % Glycerol, 0.01M PBS, PH 7.4

Preservative: ProClin

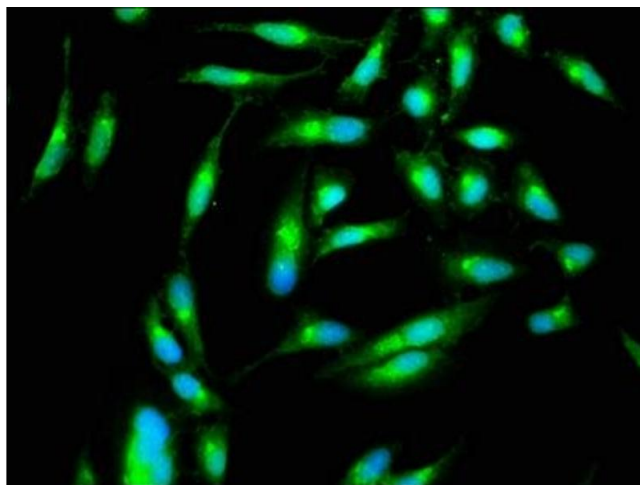
Precaution of Use: This product contains ProClin: a POISONOUS AND HAZARDOUS SUBSTANCE which should be handled by trained staff only.

Handling

Storage: -20 °C, -80 °C

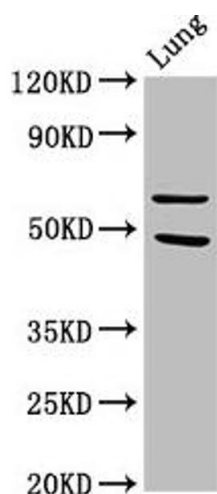
Storage Comment: Upon receipt, store at -20°C or -80°C. Avoid repeated freeze.

Images



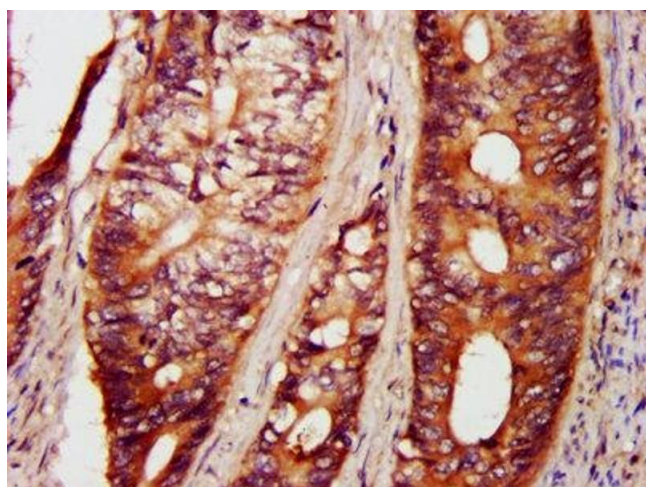
Immunofluorescence

Image 1. Immunofluorescence staining of HeLa cells with ABIN7169132 at 1:266, counter-stained with DAPI. The cells were fixed in 4% formaldehyde, permeabilized using 0.2% Triton X-100 and blocked in 10% normal Goat Serum. The cells were then incubated with the antibody overnight at 4°C. The secondary antibody was Alexa Fluor 488-conjugated AffiniPure Goat Anti-Rabbit IgG(H+L).



Western Blotting

Image 2. Western Blot Positive WB detected in: Rat lung tissue All lanes: PAK4 antibody at 3.2 µg/mL Secondary Goat polyclonal to rabbit IgG at 1/50000 dilution Predicted band size: 65, 48, 49, 55 kDa Observed band size: 65 kDa



Immunohistochemistry

Image 3. IHC image of ABIN7169132 diluted at 1:800 and staining in paraffin-embedded human colon cancer performed on a Leica Bond™ system. After dewaxing and hydration, antigen retrieval was mediated by high pressure in a citrate buffer (pH 6.0). Section was blocked with 10% normal goat serum 30min at RT. Then primary antibody (1% BSA) was incubated at 4°C overnight. The primary is detected by a biotinylated secondary antibody and visualized using an HRP conjugated SP system.

Images

Please check the [product details page](#) for more images. Overall 4 images are available for ABIN7169132.