

Datasheet for ABIN7169149
anti-PIM3 antibody (AA 278-326)



[Go to Product page](#)

4 Images

Overview

Quantity:	100 µg
Target:	PIM3
Binding Specificity:	AA 278-326
Reactivity:	Human
Host:	Rabbit
Clonality:	Polyclonal
Conjugate:	This PIM3 antibody is un-conjugated
Application:	ELISA, Western Blotting (WB), Immunohistochemistry (IHC), Immunofluorescence (IF)

Product Details

Immunogen:	Recombinant Human Serine/threonine-protein kinase pim-3 protein (278-326AA)
Isotype:	IgG
Cross-Reactivity:	Human, Mouse
Purification:	>95%, Protein G purified

Target Details

Target:	PIM3
Alternative Name:	PIM3 (PIM3 Products)
Background:	Background: Proto-oncogene with serine/threonine kinase activity that can prevent apoptosis, promote cell survival and protein translation. May contribute to tumorigenesis through: the

Target Details

delivery of survival signaling through phosphorylation of BAD which induces release of the anti-apoptotic protein Bcl-X(L), the regulation of cell cycle progression, protein synthesis and by regulation of MYC transcriptional activity. Additionally to this role on tumorigenesis, can also negatively regulate insulin secretion by inhibiting the activation of MAPK1/3 (ERK1/2), through SOCS6. Involved also in the control of energy metabolism and regulation of AMPK activity in modulating MYC and PPARGC1A protein levels and cell growth.

Aliases: Kid 1 antibody, Kid1 antibody, Kinase induced by depolarization antibody, ONCOGENE PIM3 antibody, PIM 3 antibody, Pim 3 oncogene antibody, Pim-3 proto-oncogene, serine/threonine kinase antibody, PIM3 antibody, Pim3 oncogene antibody, PIM3_HUMAN antibody, Protein kinase Kid 1 antibody, Protein kinase Kid1 antibody, Serine/threonine kinase Pim 3 antibody, Serine/threonine kinase Pim3 antibody, Serine/threonine protein kinase Pim 3 antibody, Serine/threonine protein kinase Pim3 antibody, Serine/threonine-protein kinase Pim-3 antibody

UniProt: [Q86V86](#)

Pathways: [Negative Regulation of Hormone Secretion](#)

Application Details

Application Notes: Recommended dilution: WB:1:500-1:5000, IHC:1:20-1:200, IF:1:50-1:200,

Restrictions: For Research Use only

Handling

Format: Liquid

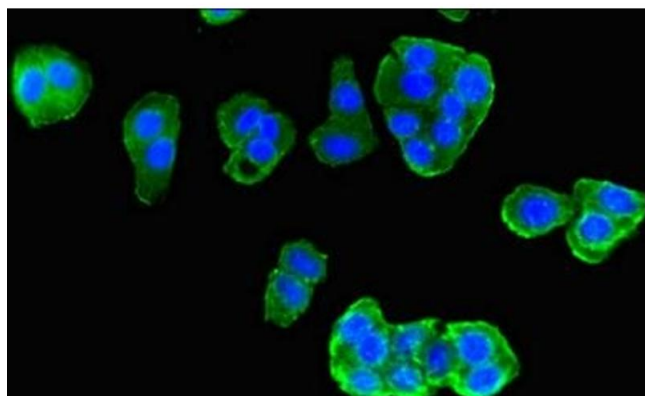
Buffer: Preservative: 0.03 % Proclin 300
Constituents: 50 % Glycerol, 0.01M PBS, PH 7.4

Preservative: ProClin

Precaution of Use: This product contains ProClin: a POISONOUS AND HAZARDOUS SUBSTANCE which should be handled by trained staff only.

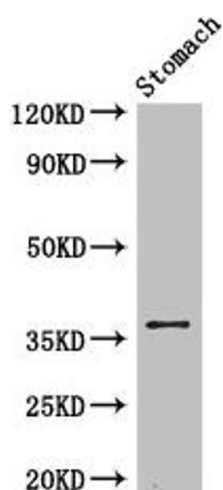
Storage: -20 °C,-80 °C

Storage Comment: Upon receipt, store at -20°C or -80°C. Avoid repeated freeze.



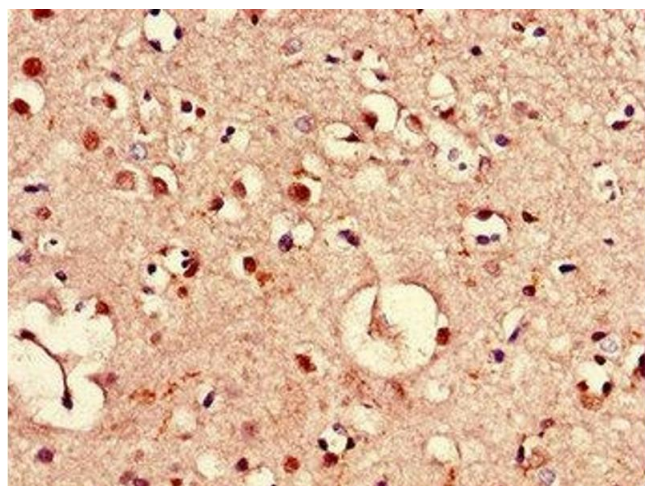
Immunofluorescence

Image 1. Immunofluorescent analysis of HepG2 cells using ABIN7169149 at dilution of 1:100 and Alexa Fluor 488-conjugated AffiniPure Goat Anti-Rabbit IgG(H+L)



Western Blotting

Image 2. Western Blot Positive WB detected in: Mouse stomach tissue All lanes: PIM3 antibody at 3.4 µg/mL Secondary Goat polyclonal to rabbit IgG at 1/50000 dilution Predicted band size: 36 kDa Observed band size: 36 kDa



Immunohistochemistry

Image 3. Immunohistochemistry of paraffin-embedded human brain tissue using ABIN7169149 at dilution of 1:100

Please check the [product details page](#) for more images. Overall 4 images are available for ABIN7169149.