

Datasheet for ABIN7169153
anti-PINK1 antibody (AA 162-272)



[Go to Product page](#)

2 Images

Overview

Quantity:	100 µg
Target:	PINK1
Binding Specificity:	AA 162-272
Reactivity:	Human
Host:	Rabbit
Clonality:	Polyclonal
Conjugate:	This PINK1 antibody is un-conjugated
Application:	Immunohistochemistry (IHC), ELISA

Product Details

Immunogen:	Recombinant Human Serine/threonine-protein kinase PINK1, mitochondrial protein (162-272AA)
Isotype:	IgG
Cross-Reactivity:	Human
Purification:	>95%, Protein G purified

Target Details

Target:	PINK1
Alternative Name:	PINK1 (PINK1 Products)
Background:	Background: Protects against mitochondrial dysfunction during cellular stress by

Target Details

phosphorylating mitochondrial proteins. Involved in the clearance of damaged mitochondria via selective autophagy (mitophagy) by mediating activation and translocation of PARK2. Targets PARK2 to dysfunctional depolarized mitochondria through the phosphorylation of MFN2. Activates PARK2 in 2 steps: (1) by mediating phosphorylation at '\Ser-65\' of PARK2 and (2) mediating phosphorylation of ubiquitin, converting PARK2 to its fully-active form (PubMed:24660806, PubMed:24751536, PubMed:24784582, PubMed:25527291).

Aliases: BRPK antibody, FLJ27236 antibody, mitochondrial antibody, PARK 6 antibody, PARK6 antibody, Phosphatase and Tensin Homolog antibody, PINK 1 antibody, PINK1 antibody, PINK1_HUMAN antibody, Protein kinase BRPK antibody, PTEN induced putative kinase 1 antibody, PTEN induced putative kinase protein 1 antibody, PTEN-induced putative kinase protein 1 antibody, Serine/threonine kinase PINK1 mitochondrial antibody, Serine/threonine protein kinase PINK1 mitochondrial antibody, Serine/threonine-protein kinase PINK1 antibody

UniProt: [Q9BXM7](#)

Pathways: [Autophagy](#)

Application Details

Application Notes: Recommended dilution: IHC:1:20-1:200,

Restrictions: For Research Use only

Handling

Format: Liquid

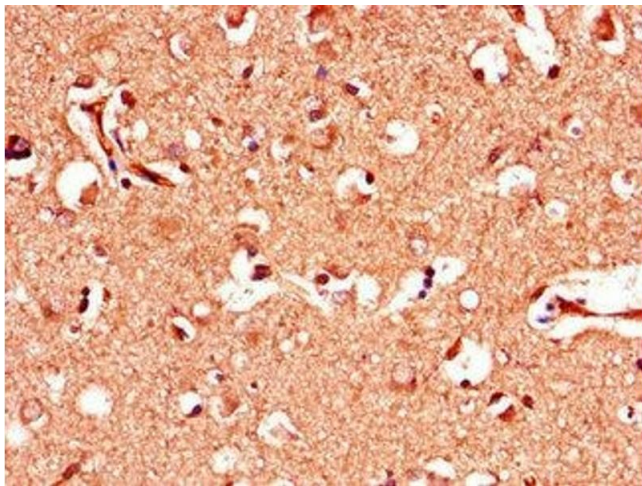
Buffer: Preservative: 0.03 % Proclin 300
Constituents: 50 % Glycerol, 0.01M PBS, PH 7.4

Preservative: ProClin

Precaution of Use: This product contains ProClin: a POISONOUS AND HAZARDOUS SUBSTANCE which should be handled by trained staff only.

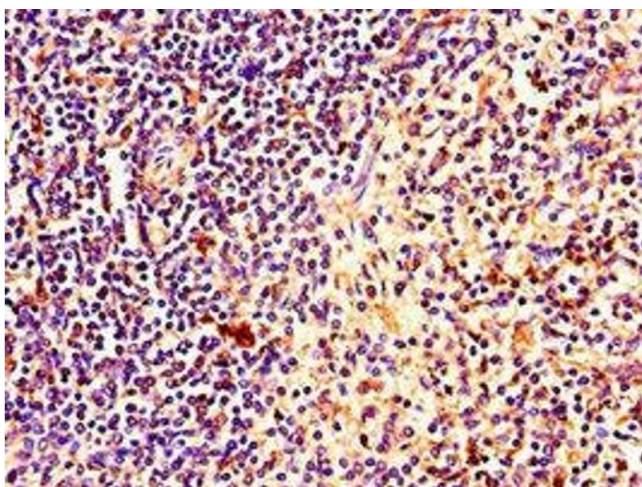
Storage: -20 °C,-80 °C

Storage Comment: Upon receipt, store at -20°C or -80°C. Avoid repeated freeze.



Immunohistochemistry

Image 1. Immunohistochemistry of paraffin-embedded human brain tissue using ABIN7169153 at dilution of 1:100



Immunohistochemistry

Image 2. Immunohistochemistry of paraffin-embedded human spleen tissue using ABIN7169153 at dilution of 1:100