

Datasheet for ABIN7169172  
**anti-Sbk2 antibody (AA 62-330)**



[Go to Product page](#)

4 Images

Overview

Quantity:	100 µL
Target:	Sbk2 (SBK2)
Binding Specificity:	AA 62-330
Reactivity:	Human
Host:	Rabbit
Clonality:	Polyclonal
Conjugate:	This Sbk2 antibody is un-conjugated
Application:	ELISA, Immunofluorescence (IF), Immunohistochemistry (IHC)

Product Details

Immunogen:	Recombinant Human Serine/threonine-protein kinase SBK2 protein (62-330AA)
Isotype:	IgG
Cross-Reactivity:	Human
Purification:	>95%, Protein G purified

Target Details

Target:	Sbk2 (SBK2)
Alternative Name:	SBK2 ( <a href="#">SBK2 Products</a> )
Background:	Background: cytoplasm, protein serine/threonine kinase activity, Rac GTPase binding, actin cytoskeleton organization, activation of protein kinase activity, cell migration, regulation of

## Target Details

apoptotic process, regulation of MAPK cascade, regulation of mitotic cell cycle, Rho protein signal transduction

Aliases: Sbk2 antibody, SBK2\_HUMAN antibody, Serine/threonine-protein kinase SBK2 antibody, SgK069 antibody, SH3-binding domain kinase family member 2 antibody, Sugen kinase 69 antibody

UniProt: [P0C263](#)

## Application Details

Application Notes: Recommended dilution: IHC:1:50-1:500, IF:1:20-1:200,

Restrictions: For Research Use only

## Handling

Format: Liquid

Buffer: Preservative: 0.03 % Proclin 300  
Constituents: 50 % Glycerol, 0.01M PBS, pH 7.4

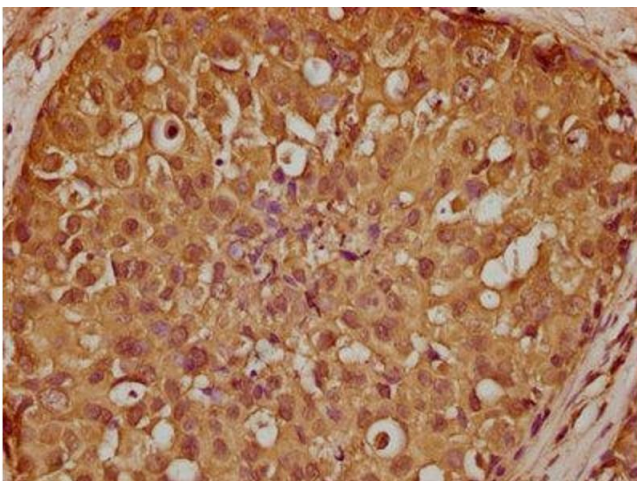
Preservative: ProClin

Precaution of Use: This product contains ProClin: a POISONOUS AND HAZARDOUS SUBSTANCE which should be handled by trained staff only.

Storage: -20 °C,-80 °C

Storage Comment: Upon receipt, store at -20°C or -80°C. Avoid repeated freeze.

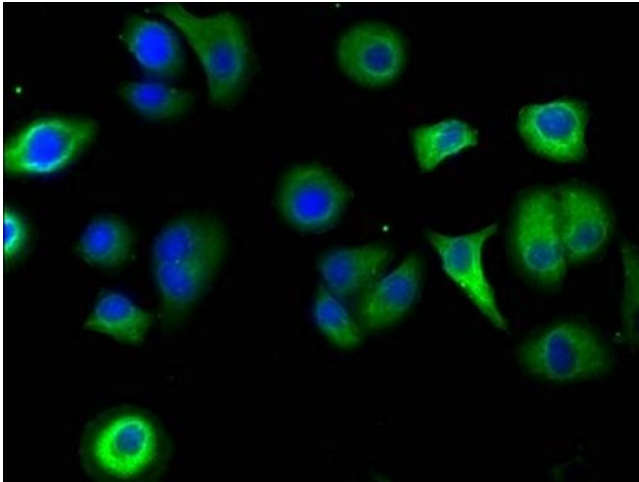
## Images



### Immunohistochemistry

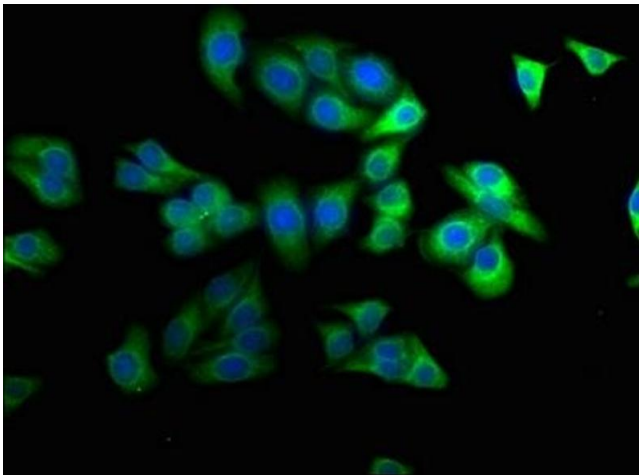
**Image 1.** IHC image of ABIN7169172 diluted at 1:200 and staining in paraffin-embedded human breast cancer performed on a Leica Bond™ system. After dewaxing and hydration, antigen retrieval was mediated by high pressure in a citrate buffer (pH 6.0). Section was blocked with 10% normal goat serum 30min at RT. Then primary antibody (1% BSA) was incubated at 4°C overnight. The primary is detected by a biotinylated secondary antibody and

visualized using an HRP conjugated SP system.



#### Immunofluorescence

**Image 2.** Immunofluorescence staining of A549 cells with ABIN7169172 at 1:50, counter-stained with DAPI. The cells were fixed in 4% formaldehyde, permeabilized using 0.2% Triton X-100 and blocked in 10% normal Goat Serum. The cells were then incubated with the antibody overnight at 4°C. The secondary antibody was Alexa Fluor 488-conjugated AffiniPure Goat Anti-Rabbit IgG(H+L).



#### Immunofluorescence

**Image 3.** Immunofluorescence staining of HepG2 cells with ABIN7169172 at 1:100, counter-stained with DAPI. The cells were fixed in 4% formaldehyde, permeabilized using 0.2% Triton X-100 and blocked in 10% normal Goat Serum. The cells were then incubated with the antibody overnight at 4°C. The secondary antibody was Alexa Fluor 488-conjugated AffiniPure Goat Anti-Rabbit IgG(H+L).

Please check the [product details page](#) for more images. Overall 4 images are available for ABIN7169172.