

Datasheet for ABIN7169217
anti-VRK1 antibody (AA 257-396)[Go to Product page](#)

3 Images

Overview

| | |
|----------------------|--|
| Quantity: | 100 µL |
| Target: | VRK1 |
| Binding Specificity: | AA 257-396 |
| Reactivity: | Human |
| Host: | Rabbit |
| Clonality: | Polyclonal |
| Conjugate: | This VRK1 antibody is un-conjugated |
| Application: | Western Blotting (WB), ELISA, Immunohistochemistry (IHC) |

Product Details

| | |
|-------------------|--|
| Immunogen: | Recombinant Human Serine/threonine-protein kinase VRK1 protein (257-396AA) |
| Isotype: | IgG |
| Cross-Reactivity: | Human |
| Purification: | Antigen Affinity Purified |

Target Details

| | |
|-------------------|---|
| Target: | VRK1 |
| Alternative Name: | VRK1 (VRK1 Products) |
| Background: | Background: Serine/threonine kinase involved in Golgi disassembly during the cell cycle: following phosphorylation by PLK3 during mitosis, required to induce Golgi fragmentation. Acts |

Target Details

by mediating phosphorylation of downstream target protein. Phosphorylates '\Thr-18\' of p53/TP53 and may thereby prevent the interaction between p53/TP53 and MDM2.

Phosphorylates casein and histone H3. Phosphorylates BANF1: disrupts its ability to bind DNA, reduces its binding to LEM domain-containing proteins and causes its relocalization from the nucleus to the cytoplasm. Phosphorylates ATF2 which activates its transcriptional activity.

Aliases: MGC117401 antibody, MGC138280 antibody, MGC142070 antibody, PCH1 antibody, PCH1A antibody, Serine/threonine protein kinase VRK1 antibody, Serine/threonine-protein kinase VRK1 antibody, Vaccinia related kinase 1 antibody, Vaccinia virus B1R related kinase 1 antibody, Vaccinia-related kinase 1 antibody, VRK1 antibody, VRK1_HUMAN antibody

UniProt: [Q99986](#)

Application Details

Application Notes: Recommended dilution: WB:1:1000-1:5000, IHC:1:20-1:200,

Restrictions: For Research Use only

Handling

Format: Liquid

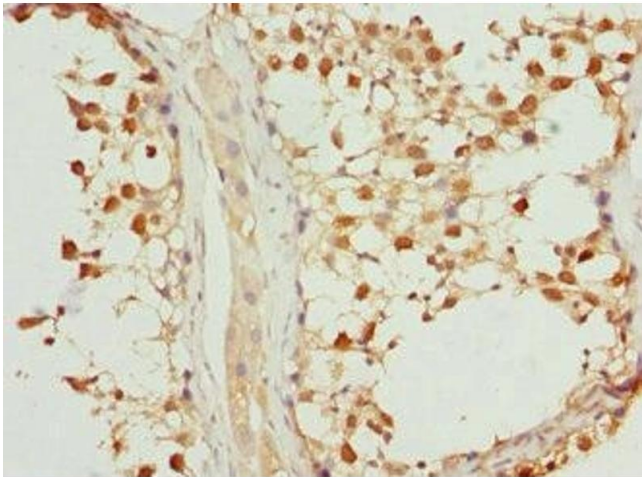
Buffer: PBS with 0.02 % sodium azide, 50 % glycerol, pH 7.3.

Preservative: Sodium azide

Precaution of Use: This product contains Sodium azide: a POISONOUS AND HAZARDOUS SUBSTANCE which should be handled by trained staff only.

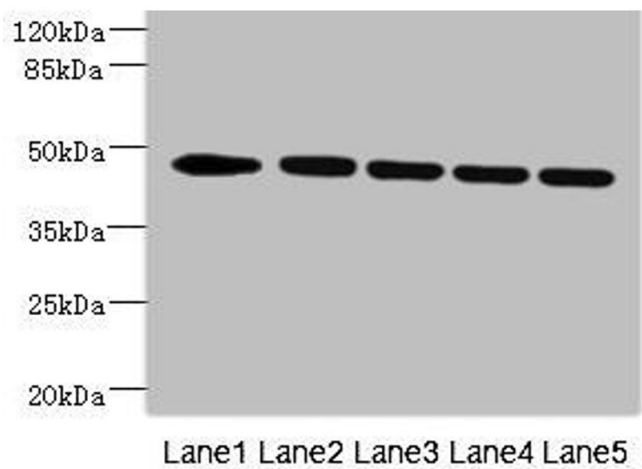
Storage: -20 °C,-80 °C

Storage Comment: Upon receipt, store at -20°C or -80°C. Avoid repeated freeze.



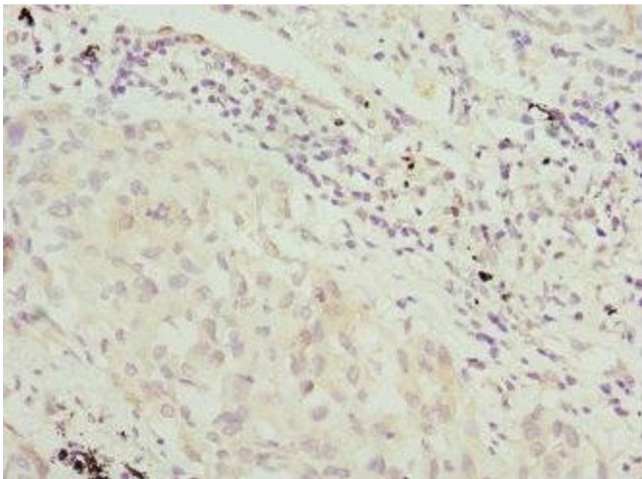
Immunohistochemistry

Image 1. Immunohistochemistry of paraffin-embedded human testis tissue using ABIN7169217 at dilution of 1:100



Western Blotting

Image 2. Western blot All lanes: DCXR antibody at 4.74 μ g/mL Lane 1: MCF-7 whole cell lysate Lane 2: Hela whole cell lysate Lane 3: A549 whole cell lysate Lane 4: 293T whole cell lysate Secondary Goat polyclonal to rabbit IgG at 1/10000 dilution Predicted band size: 45 kDa Observed band size: 45 kDa



Immunohistochemistry

Image 3. Immunohistochemistry of paraffin-embedded human lung cancer using ABIN7169217 at dilution of 1:100